

CHESS.

SOLUTION TO PROBLEM 159.

- 1 B-B6 1 K-Q3 or B4
 2 Q-K8, etc. If 1 K-K3 or B5
 2 Q-K4, ch, etc. If 1 B-Kt2
 2 B x B, etc. If 1 B-Q2 or K3
 2 Q-K8, etc.

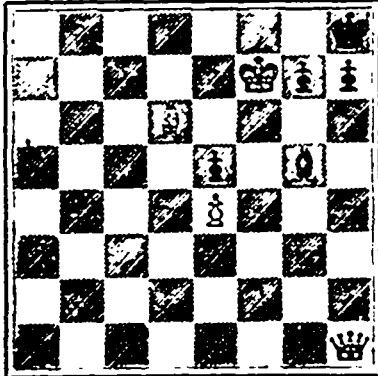
Solved by D. A. G and C.W. L.

SOLUTION TO PROBLEM 160.

R-QB sq. Solved by D. A. G.

PROBLEM 163.

Black 5 pieces.

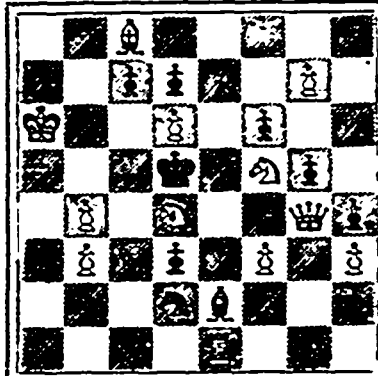


White 4 pieces.

White to play and mate in three moves.

PROBLEM 164.

Black 9 pieces.



White 12 pieces.

White to play and mate in two moves.

COMMENTS.

A slight mistake occurred last issue in the printing of Problem 161. The queen at rook's square should have been the white king. We will hold the solution over a week longer than usual to give all a chance at it.

The following end-game will be found a nice piece of work. The men are:—

White—K at QR2; Q at QR7; Kt at Q5; P's at QKt2 and 3, K4 and KB4.

Black—K at QBsq; Q at KR7; R at Qsq; P's at QR4, QKt2, QB2, Q3, KKt4.

We shall be glad to learn how white may win the game, he having the move. Solvers need not play the game to a checkmate, but only till white has sufficient advantage in force to enable him eventually to win.

Though estimates as a general thing prove difficult, the line of play in this seems rather too obvious. The position is:—

White—K at K3; Q at QR4; R's at QBsq and KR6; B at QR8; P's at Q2 and KB2.

Black—K at QB4; Kt's at QB6 and QR7; B at QR2; P's at Q6, K4, K5.

White plays first and compels black to mate in two moves.

N. B.—Solutions will in all cases appear at the end of two weeks.

GAME 162.

A fine consultation game, played at the Havana Chess Club.

Scotch Gambit.

White.

Black.

- | | |
|-------------------|------------------|
| Celso Golmayo. | Emanuel Lasker. |
| Guillermo Lopez. | Enrique Conill. |
| Enrique Oetalsza. | Eduardo Herreba. |
| 1 P-K4 | 1 P-K4 |
| 2 Kt-KB3 | 2 Kt-QB3 |
| 3 P-Q4 | 3 P x P |
| 4 Kt x P | 4 Kt-B3 |
| 5 Kt-QB3 | 5 B-Kt5 |
| 6 Kt x Kt | 6 KtP x Kt |
| 7 Q-Q4 | 7 Q-K2 |
| 8 P-B8 | 8 P-Q4 |
| 9 B-KKt5 | 9 Castles |
| 10 Castles | 10 B-QB4 |
| 11 B x Kt | 11 P x B |
| 12 Q-Q3 | 12 P-Q5 |
| 13 Kt-K2 | 13 R-Q |
| 14 Kt-Kt3 | 14 R-Kt |
| 15 P to KB4 | 15 K-R |
| 16 Q-KB3 | 16 B-K3 |
| 17 P-QR3 | 17 R x P!! |
| 18 K x R | 18 R x P ch |
| 19 Q x B | 19 R to QKt ch |
| 20 Q-Kt3 | 20 B x Q |
| 21 P x B | 21 Q-Kt5 |
| 22 R-Q3 | 22 P-QB4 |
| 23 R-KB3 | 23 P-B5 |
| 24 B x P | 24 Q x B |
| 25 R-QB | 25 Q-Kt4 |
| 26 R x P | 26 P-Q6 |
| 27 R-B3 | 27 R-Q |
| 28 R(KB3) x P!! | 28 Q x R! |
| 29 R x Q | 29 R x R |
| 30 K-B2 | 30 R-Q5 |
| 31 K-B3 | 31 R-Q8 |
| 32 Kt-R5 | 32 P-B4 |
| 33 P-K5 | 33 R-KR8 |
| 34 Kt-Kt3 | 34 R x P |
| 35 Kt x P | 35 R x P |
| 36 Kt-Q6 | 36 K-Kt |
| 37 P-B5 | 37 K-B |
| 38 P-Kt4 | 38 P-KR4! |
| 39 P-K6 | 39 P x P |
| 40 P x P | 40 K-K3 |
| 41 Kt-B8 ch | 41 K x P |
| 42 Kt x P | 42 P-R5 |
| 43 P-Kt5 | 43 P-R6 |
| 44 P-Kt6 | 44 R-Kt2 |
| 45 Kt-B6 | 45 P-R7 |

And White resigns.

MINING.

Mineral samples sent to the CARTIC office, accompanied by a fee of one dollar, will be submitted to a thoroughly competent assayer for a preliminary examination and slight test of contents. The results will be communicated to senders of samples, and if full assays are deemed advisable, they will be notified and instructed as to amount of fees to be remitted.

THE MINING OUTLOOK.—The mining outlook, especially in coal, iron and gold, is very bright, and other branches, such as lead, copper, manganese and antimony are, under the stimulating effect of large investments in other lines, beginning to look up. The effect of the introduction of English capital in the Montagu mines is most beneficial, and as the operations of both the companies there are resulting satisfactorily there is every reason to anticipate that in the near future a large amount of London capital will seek investment in Nova Scotia gold mines. With the prevailing sentiment in London against mining ventures it is greatly to the credit of Mr. Alfred Woodhouse, F. G. S., that he succeeded in floating Nova Scotia gold mines there at the time he did. His undoubted great influence and enterprise will, we believe, be rewarded by the success of his ventures, but beyond that in breaking through the prejudice that prevailed in London against our gold mines he has done the Province an inestimable amount of good. Capitalists in the United States, Ontario and Quebec are also waking up to the fact that there is money in our gold mines, and this season should witness a great advance in this branch of mining.

MONTAGU.—The Nova Scotia Gold Mines, Limited, seems to be reaching a profitable stage under the able management of Capt Thomas.

The last clean up, we understand, resulted in a gold bar weighing 160 ounces, from 150 tons quartz crushed.

When this mine or series of mines and the Symon Kaye begin to pay dividends we may look for a boom in our gold mines that will equal the mad rush to South Africa. Small-minded, envious individuals, who are far too numerous in this community, are doing their best to belittle and kill these enterprises, and we need an influx of broad-minded, vigorous, able and honest men if gold mining in this Province is to ever attain the prominence it deserves. There are many such here now, but there is room for many more.

GOLDENVILLE.—Geo. M. Hamilton has leased to James A. Fraser 22 gold mining areas at Goldenville for two years with the option of purchase.

STILL ANOTHER COAL COMPANY.

The *Chronicle* has the following in regard to another new coal company: The introduction of bills in the local legislature to incorporate coal and railway companies is not yet ended. A bill is to be presented this week to incorporate a company to operate the coal areas at Port Hood. The gentlemen who are asking for the legislation are all residents of Port Hood. They are, Samuel MacDonell, Q. C.; Edward D. Tremaine, barrister; D. F. McLean, merchant; Daniel McLennan, barrister; Alex. McNeil, barrister; John I. Smythe, merchant; A. J. McDonald, merchant.

Mr. MacDonell was seen at the Halifax last night by a *Chronicle* reporter and in reply to a question he said:

"The Port Hood coal mines are among the best in the Province and the gentlemen asking for a charter to work them mean business. The areas are very extensive and can be easily worked."

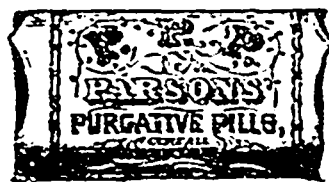
The Port Hood mines are located about one mile distant from the line of the Richmond and Inverness railway, part of which has been constructed. The development of the mines means the early completion of this road. It runs along the shore from Hawkesbury to the Chimney Corner mines. The Mabou and Broad Cove mines are on this line, and the completion of the road would afford shipping facilities for all four mines. Mr. MacDonnell is in favor of the building of the south shore line, and says that if subsidies are granted they should be given where the benefit would be felt by the greater number of people. He does not take much stock in the proposed branch from Orangedale to Broad Cove, as he contends it would only benefit Broad Cove and the other mines would remain isolated. On the other hand the shore road would afford facilities for all. In speaking on this point Mr. MacDonnell cited the fact that the municipality of Inverness had granted a free right of way and a bonus of \$100,000 to the Inverness and Richmond in order to secure the shore road. His company will not ask for power to construct a railway, as they feel confident the Richmond and Inverness company's road will be completed in good time. All the railway they will require to operate will be a short piece to connect with the mines.

The Queens Co. Mine, at Whiteburn, has been sold to a Fitchburg, Mass., gentleman, and his son (who has had experience in mining) is now in charge. Mr. R. R. McLeod has shown up the excellence of this abandoned property, and arranged the sale.—*Gold Hunter*.

UNFREEZABLE DYNAMITE.—At the sixty fourth meeting of the American Institute of Mining Engineers at Montreal Mr. E. E. Russell Tratman, of New York, read the following paper on "Unfreezable Dynamite," which, with the discussion thereon, we reproduce from the March number of the *Canadian Mining Review*:—

"The use of dynamite in cold weather is attended with some difficulty, owing to the freezing of the material and its consequent liability to fail to explode when the fuse is fired. With proper methods and care the dynamite can be thawed with reasonable safety, but numerous accidents occur (more than get reported in the public press) due to carelessness in the operation and to the treacherous nature of the material, or a combination of both

PARSONS



PILLS

Make New Rich Blood

"Best Liver Pill Made."

They positively cure SICK HEADACHE and BILIOUSNESS, all Liver and Bowel Complaints. In Glass Vials. Take in a bottle, use a dose. They expel all impurities from the blood. Delicate women find great benefit from using them. Sold everywhere, or sent by mail for \$2.50 in stamps. Five bottles \$10.00. Full particulars free. L. S. JONES, N. & O. 21, Boston House St., Boston, Mass.

Thos. P. Connors,
 CUSTOM TAILOR.
 55 Granville St. Cor. Sackville.
 HALIFAX, N. S.