

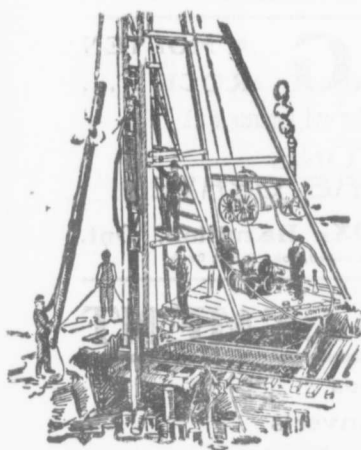
The Canadian Bridge Co., Limited

WALKERVILLE, ONT.

MANUFACTURERS OF

RAILWAY AND HIGHWAY BRIDGES

Locomotive Turn Tables,
Roofs, Steel Buildings and
Structural Iron Work of all descriptions



PILE DRIVING

on land or water by Steam Pile Drivers or Drop Hammers.

**Portable Boilers
Hoisting Engines
Pumping Machinery
TO LET**

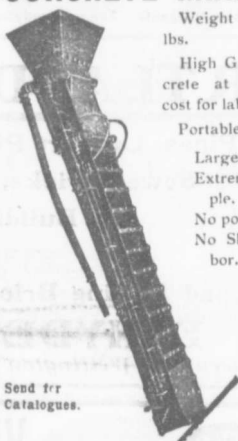
Bridge Building, Trestle Work, Wharves
Dams, Diving Submarine Work and
General Contracting.

WM. HOOD & SON
10 Richmond Sq. - MONTREAL

Speight & Van Nostrand
LAND SURVEYORS, ETC.

Room 405 Temple Building, TORONTO, CAN.
Field Notes of the late P. P. Passmore.

THE PORTABLE GRAVITY CONCRETE MIXER



Weight about 500 lbs.

High Grade Concrete at very low cost for labor.

Portable.

Large capacity.
Extremely Simple.

No power used.
No Skilled Labor.

Continuous in action.

Send for Catalogues.

Other Mixers and Concrete
Mixing Machinery

E. F. Dartnell,
Montreal



PILE DRIVING

and Foundation Work.

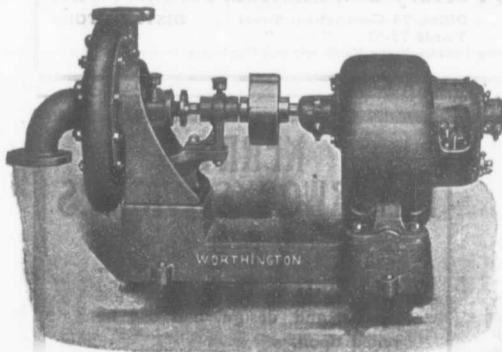
By 5-ton Automatic Steam Pile Hammer.
Water Jet or Drop Hammers, Dock Building,
Submarine Work and Dredging.

BUILDING MOVER AND WRECKER
General Contracting.

JNO. E. RUSSELL, - Toronto
908 Queen St. E.—Phone M. 2007.

WORTHINGTON PUMPS

FOR WATER WORKS SERVICES



Worthington Volute Pump and Direct Current Motor.

"WORTHINGTON" TURBINE PUMPS

for heads up to 2,000 feet, are
Reliable, Durable, Efficient
and exceedingly simple

BOILERS, TANKS, FILTERS, ETC., ETC.

If you are interested in Pumps and Receivers
for Low Pressure Heating Systems, write for particulars and prices.

The John McDougall Caledonian Iron Works Co.,
Montreal. **Limited.**