

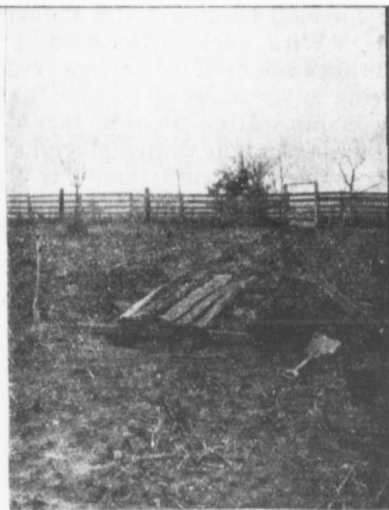
very
e no
the
h no
ation
"sea
take
many
ed to
lation
come
e time
, giv-
of a
ottom
t into
lso a
ending
rough
et. I
ometer
n this
limbed
ometer
e out-
e effect
en the
pen air,
m the
ot vary
winter.
in both
h they
hen set
straw
es and
and free
ability
with no
gthened.
colonies
ed them
a. This
o such a
I put 96
and lost
were 16
em when
ese were
1 of them

balled and killed their queens when they were set out. This was the most serious loss with which I ever met while in the bee business. There

haps the heat generated by so great a number piled in such close quarters drove out the bees, Perhaps they went in search of air. They certainly



READY FOR THE RAILS.



READY FOR THE STRAW.



READY FOR THE EARTH.



READY FOR THE WINTER.

was nodysentery. The combs where clean and dry and full of honey, but the bees had deserted the hives, and crawled all through the straw. Per-

went.

Since then I have several times wintered a dozen colonies in one clamp, and always with good success