

RAPPI
TEA charming wrapper was made of *vieux rose* cashmere and
FIT lined with cream lace insertion. Two rows of insertion
NG. covered the yoke and the lower edge of the wrapper.
A have pattern No. 9490 in nine sizes for ladies from
-Down to forty-six inches, bust measure. To make the wrap-
per for a lady of medium size, will require five yards and
fourths of material forty-four inches wide.
or of pattern, 1s. 3d. or 30 cents.

Figure No. 215 B.—LADIES' WATTEAU ROBE.
(For Illustration see Page 613.)
Figure No. 215 B.—This represents a Ladies' tea-

The pat-
is which is
9495 and
1s. 6d. or
cents, is in
side over sizes for
ly-lings from thirty-
four to forty-two
under-arms, bust
k gossamer, and
seam as be seen
the white on this
have red

are you here is a
r forming grace
under out this
shirt, which
will her serve as a
losing gown or lux-
enter plus, house-
of e. The robe
but here shown
ons. ly elegantly
separate up in a
om abination of

smo-
a dou-
ned
I falli-
rom t
on t
to t
ams
e a
ily
fulm
the f
o-se
de o
lini
datt
circi
endi
oap-
ate t

of LADIES' WATTEAU TEA-GOWN, ROBE OR WRAPPER. (TO BE MADE
WITH OR WITHOUT A FITTED BODY-LINING AND IN
A SHORT TRAIN OR IN ROUND LENGTH.)

(For Description see Page 626.)

h violet brocaded silk and plain white silk, with a ribbon
els and a lavish trimming of Mechlin lace. The robe is
easily graceful, having a circular back that falls in a
teau from the neck, and loose fronts that are folded
in great revers to below the waist and widely lapped
in a style, a cordelière drawn through openings under
Watteau confining the fulness in a becoming way. A
ed body-lining renders the robe trim, and a lace jabot
e it shows in the open neck of the wrapper and a
nding collar with a ribbon stock finish it stylishly. A
of fancy tab-collar flares from the ends of the revers,
both the collar and revers stand out upon the two-
sleeves, which are reversed to form elaborate cuffs.
cashmere, flannel and various pretty woollens will be used.
well as silk, and swan's-down, rich or inexpensive laces,
iron platings, ribbon, fancy braid and fur form a list from
ich suitable trimmings may be selected.

LADIES' SINGLE-BREASTED COAT, IN THREE-QUARTER
LENGTH. (DESIRABLE FOR FUR, PLUSH, VELVET AND
OTHER WINTRY FABRICS.)
(For Illustrations see Page 611.)

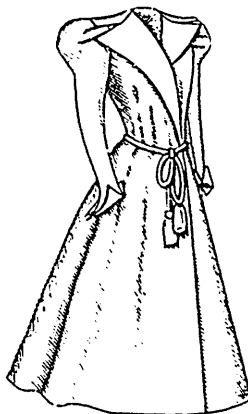
No. 9487.—This handsome three-quarter length coat is an
up-to-date mode for furs, plush, velvet and other heavy Winter fabrics.
It is shown made of seal-skin. Under-arm and side-back gores and a
center seam render the coat close-fitting at the back and sides, the parts
being shaped to ripple in the skirt,
which is full enough to have a most
graceful effect over any style of skirt.
The fronts are loose and are closed
all the way at the center with hooks
and eyes and elastic or cord loops
over olive buttons. The neck is finished
with a storm collar on the Medici
order. The two-seam sleeves are
gathered at the top to puff out stylishly
and are completed with deep
roll-up cuffs having rounding upper
corners flaring at the back.

These coats are made of heavy coat-
ings and seal-plush, as well as fur.
We have pattern No. 9487 in ten

sizes for ladies
from thirty to forty-
eight inches,
bust measure. For
a lady of medium
size, the coat requires
two yards and five-
eighths of material
fifty-four inches wide.
Price of pattern, 1s. 3d.
or 30 cents.

LADIES' DOUBLE-
BREASTED
COAT, IN THREE-
QUARTER
LENGTH. (DESIR-
ABLE FOR
FUR, PLUSH, VELVET
AND OTHER
WINTRY FABRICS.)
(For Illustrations see
Page 611.)

No. 9485.—Another
view of this
coat may be ob-



9495



9495
Side-Back View.

tained by referring to figure No. 211 B in this publication.
This comfortable coat is here represented made of seal-skin,
for which, as well as for plush, velvet, etc., it is eminently
suitable. It is in three-quarter length and is closely fitted at the
sides and back by under-arm and side-back gores and a curv-