

LATEST FINANCIAL AND SHIPPING NEWS AND NOTES

TRADING PROFESSIONAL WITH BEAR
PRESSURE DURING EARLY HOURS

Few factors in week-end session to encourage dealers
— Remarkable trade improvements of few
bright features—Bond Market unsteady.

New York, Feb. 5.—No very definite or satisfactory conclusions were to be derived from the week-end session of the market, which began with declines, but made general, though irregular, recoveries before the close. Trading lost none of its professional flavor; investment purchases and other constructive factors being deterred by the uncertain international situation.

The declines of the first hour were suggestive of bear pressure, especially in Mercantile Marine preferred and similar active issues, which have been used in the past to depress other leaders. Supporting orders met the decline with considerable readjustment, some of the war group manifesting marked strength.

Rails played a subordinate part in the operations of the short session, but that division was steady to strong, with Union Pacific, Canadian Pacific, and Lehigh Valley as leaders. Other standard shares were little changed. United States Steel and Crucible Steel were again the features, the former ranging within fractional limits, while Crucible rose and fell between 85½ to 85½, closing at 85, a

CLOSING LETTER OF
N. Y. MARKET BY
E. & C. RANDOLPH

(McDOUGALL & COWANS.)
New York, Feb. 5.—Conflicting reports from Berlin and Washington in regard to the Lusitania case kept the market irregular for some time after the opening, but later the optimistic view taken of the situation in Washington had the effect of strengthening prices in the standard stocks, and the closing was fairly firm. Secretary Lansing is reported to have asked Ambassador von Bismarck for several days in which to consider the new German note and confer with President Wilson. There seems likely to be no further developments in the case before Tuesday. For that reason the market is likely to remain around present levels with more or less irregularity depending upon the tenor of reports from Washington.

Norfolk and Western made an extraordinary statement of earnings. Agitation regarding the miners wage controversy will keep the matter of the railroad companies difficult with their men in the public mind, and will have an effect in restraining market operations.

E. & C. RANDOLPH.

SHIPPING

MINIATURE ALMANAC.

February Phases of the Moon
First Moon . . . 3rd 12h 6m p.m.
New Quarter . . . 10th 6h 26m p.m.
Full Moon . . . 18th 10h 29m p.m.
Last Quarter . . . 26th 5h 24m a.m.

Date	Day	Time	Water	Time	Water
7	M	7:45	5:24	14:15	20:54
8	T	7:40	5:26	14:29	21:41
9	W	7:38	5:28	14:44	22:29
10	T	7:37	5:40	15:04	23:19
11	F	7:36	5:41	15:29	24:11

BRITISH PORTS.

Port Natal, Feb. 1.—Sld stmr Stikstad (Nor), Lodrup, C. V., for Vladivostok.
Belfast, Feb. 2.—Arrd stmr Torr Head, Butt, St. John's, Nfld.
Liverpool, Feb. 3.—Arrd stmr Eolian, Boston.
Sld Feb. 3, stmr Adriatic, New York.

FOREIGN PORTS.

Boston, Feb. 2.—Sld stmr Ninian, Manchester, Eng.
Portland, Feb. 3.—Arrd stms Glen, Kirby, Genoa, Dec. 14, via Halifax; Michlan, Finch, Liverpool, Jan. 14; Toronto, Barber, London, Jan. 11.
Old Feb. 2, stmr Kirkdale, Millar, Avonmouth.
Sld Feb. 3, stmr Auchendale, Liverpool.
City Island, Feb. 3.—Passed schr Conrad S., South Amboy for Lunenburg, N. S.

MARINE NOTES.

RECENT CHARTERS.
Steamer Teesbridge, 25,000 quarters grain, from the Atlantic Range, including Boston and Portland, to West Britain, 15c 6d, with options, February.

HAD ROUGH VOYAGE.

Battered during the greater part of her way across the Atlantic, the Warren liner Schem arrived at Boston from Liverpool. She was four days

STOCK QUOTATIONS
ON N.Y. EXCHANGE

(McDOUGALL & COWANS.)
Open, High, Low, Close

Am Beet Sug	58	67 1/4	67	67 1/4
Am Car Ry	67 1/4	67 1/4	67	67 1/4
Am Loco	66	66 1/2	65 1/2	66
Am Smlt	99 1/2	100	98 1/2	99 1/2
Anaconda	33 1/2	35 1/2	34 1/2	35 1/2
Am Wool	49	50	48 1/2	49
Am Tel	127	127 1/2	127	127 1/2
Atchafson	103	103 1/2	102 1/2	103
Am Can	61 1/2	62 1/2	61 1/2	61 1/2
Balt and O Co	88	88 1/2	88	88 1/2
Beth Steel	47 1/2	47 1/2	47	47 1/2
Butte and Sup	77 1/2	78	77	78
C F I	44	44 1/2	43 1/2	44 1/2
NY NH and H	67 1/2	67 1/2	67	67 1/2
Ches and Ohio	62	62 1/2	61 1/2	62
Chino	53	53 1/2	53	53 1/2
Cent Leath	53 1/2	53 1/2	53	53 1/2
Can Pac	169	170	168	170
Cruc Steel	85 1/2	85 1/2	83 1/2	85 1/2
Erle Com	37 1/2	37 1/2	37 1/2	37 1/2
Gr Nor Pfd	120 1/2	120 1/2	120	120 1/2
Lehigh Val	76 1/2	77	76 1/2	77
NY Cent	104 1/2	105 1/2	104 1/2	105 1/2
Nor Pac	113 1/2	113 1/2	112 1/2	113 1/2
Penn	56	56	55 1/2	56
Pres Stl Car	55 1/2	55 1/2	55	55 1/2
Reading Com	77 1/2	77 1/2	77	77 1/2
Rep Steel	52 1/2	52 1/2	52 1/2	52 1/2
St Paul	97 1/2	97 1/2	97	97 1/2
Sou Pac	99 1/2	99 1/2	99	99 1/2
Sloss	58 1/2	58 1/2	58	58 1/2
Studebaker	148 1/2	148 1/2	148	148 1/2
Union Pac	113 1/2	113 1/2	112 1/2	113 1/2
U S Steel Com	82 1/2	82 1/2	82 1/2	82 1/2
U S Steel Pfd	116	116	116	116
Westing Elec	66	66 1/2	65 1/2	66

MONTREAL

TRANSACTIONS

(McDOUGALL & COWANS.)

Morning

Montreal, Saturday, Feb. 5th—
Steamships Com.—25 @ 18 1/2.
Steamships Pfd.—30 @ 75, 75 @ 75 1/2.

Steel of Canada—60 @ 38, 5 @ 38 1/2.
Dom. Textile—10 @ 78.
Cement Pfd.—10 @ 91.
Canada—25 @ 40.
Ontario Steel—15 @ 19.
Dom. Iron Com.—25 @ 45.
Montreal Power—100 @ 22 1/2, 4 @ 22 1/2.

22 1/2 @ 72 1/2.
Bell Telephone—23 @ 145 1/2.
Canada Car—25 @ 70, 35 @ 70 1/2.
60 @ 72 1/2, 25 @ 72 1/2, 25 @ 72 1/2, 155 @ 72 1/2.
75 @ 73, 25 @ 72 1/2.
Detroit United—20 @ 77.
Lake of the Woods—45 @ 133.
Laurenside Pulp—25 @ 135 1/2.
McDonalds—20 @ 93, 20 @ 10.
N. S. Steel—25 @ 96 1/2.
Hollinger—30 @ 94 1/2.
Dom. Bridge—25 @ 22 1/2.
Ames Com.—20 @ 21 1/2, 20 @ 21 1/2, 10 @ 22.

10 @ 22.
Pennam—1 @ 59, 45 @ 60.
Bank of Montreal—15 @ 224.

HOTEL ARRIVALS.

Royal.
Mrs S C Chaters, Point du Chen; J R Gibault, J C Sherman, G E Nash, A Dessette, C W Dingwall, K G Boyd, J L Sinclair, J G Scott, H Wallace, D M Ballantyne, E Anthony, O S Sherriff, Toronto; H Edwards, S Morley, Glace Bay; P G Brown, Halifax; H Harrison, W H Wilson, A Blaustein, E B Hesser, W M Whitaker, Montreal; H Y V Chens, Toronto; Rev H Waterson, Kingston; L B Archibald, Truro; H McInnes, J F Coleman, Halifax; J R Wright, R B Hall, J McDonald, W M Johnston, P J McNamara, R H Raymond, L J C W Brown, G P Hanson, W W Webber, Montreal; K E Barton, A Knight, D M Mendes, K G Duffett, F G Anderson, F W Lynde, Victoria.
A G McCoy, Fredericton; J C Gillespie, Truro; F Lister, McAdam Jet; G A Shaver, G S Gould, R A Law, James Robertson, John Walker, Thos Hood, Mr and Mrs Guilfoyle, Montreal; Z Garneau, Quebec; P F Hunter, St Stephen; N M Tompkins, Florenceville; L T Cayne, Moncton; K Joseph, McAdam Jet.
Toronto: J A B Storer, Bathurst; L B Jones, Windsor, Ont; W N McLaren, Ottawa; W Owen, Charlottetown; D W Hornell, Toronto.

NOTICE TO MARINERS.

Notice is hereby given that the fog alarm station at Cape Spencer, St. John County, N. B., having been destroyed by fire on February 4th, 1916, the alarm will not be in operation until further notice.
J. C. CHESLEY,
Agent, Marine and Fisheries Dept. St. John, N. B., Feb. 6th, 1916.

NOTICE TO MARINERS.

Notice is hereby given that the light on the automatic gas and whistling buoy, anchored off Point Lepreau, is not burning. Will be relighted soon as possible.
J. C. CHESLEY,
Agent, Marine and Fisheries Dept. St. John, N. B., Feb. 4th, 1916.

CLING TO THE OLD FAVORITE

Our forefathers used it before us, and many of us have used no other.
Why should we change to some other brand when

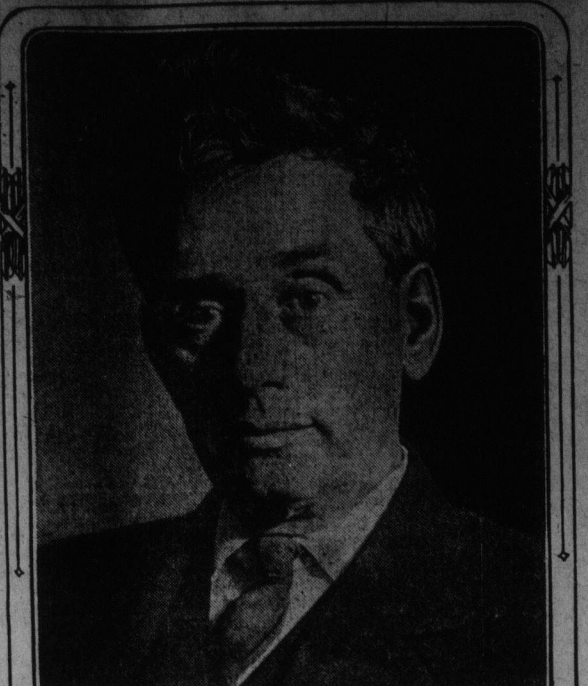
WHYTE & MACKAY'S
SPECIAL SELECTED
HIGHLAND WHISKY

has never failed to give full and complete satisfaction?
You will always find the local trade well supplied with this brand.

Printing

We have facilities equal to any printing office in Eastern Canada for the production of high-grade work.
Job Printing of all kinds promptly attended to.
Phone today Main 1910
Standard Job Printing Co.
St. John, N. B.

LAWYER NOMINATED FOR SUPREME COURT



LOUIS D. BRANDEIS

Louis Dembitz Brandeis, of Boston, was nominated by President Wilson to succeed the late Associate Justice Joseph R. Lamar as a member of the Supreme Court of the United States. The nomination was so unexpected, so different from what was expected by Senators and Representatives of all parties, that it nearly knocked them off their feet. Many persons are predicting that the nomination never will be confirmed by the Senate.

CHICAGO GRAIN AND PRODUCE PRICES

Chicago, Feb. 5.—Wheat—No 2 red, nominal; No 2 hard, 1.32; No 3 hard, 1.26½ to 1.27½.
Corn—No 2 yellow, nominal; No 4, yellow, 72½ to 73½; No 3, yellow, 72½ to 73½; No 4, white, 18½ to 19½; standard, nominal.
Rye—Nominal.
Barley—70 to 81.
Timothy—5.50 to 8.00.
Clover—10.00 to 15.00.
Pork—19.00 to 20.00.
Lard—7.32.
Ribs—10.25 to 10.75.

NEW YORK COTTON MARKET SALES

(McDOUGALL & COWANS.)
High, Low, Close

Mar.	11.85	11.80	11.81
May	12.07	12.00	12.01
July	12.21	12.12	12.14
Oct.	12.23	12.17	12.19
Dec.	12.33	12.30	12.32

McDOUGALL & COWANS

Members of the Montreal Stock Exchange
58 Prince Wm. Street, St. John, N. B.
SECURITIES BOUGHT AND SOLD IN ALL MARKETS
LISTED STOCKS CARRIED ON MARGIN
OFFICES:—Montreal, Quebec, Vancouver, Ottawa, Winnipeg, Halifax.
Connected by Private Wire.

THOMAS BELL & CO., St. John, N. B.

PUGBLY BUILDING, 48 PRINCESS STREET
Lumber and General Brokers
SPRUCE, HEMLOCK, BIRCH, SOUTHERN PINE, OAK, CYPRESS.
SPRUCE PILING AND CROSGATED PILING.

FIRE INSURANCE

We represent first-class British, Canadian and American tariff offices with combined assets of over One Hundred and Sixty Million Dollars
C. E. L. JARVIS & SON, 74 Prince Wm. St.

CLING TO THE OLD FAVORITE

Our forefathers used it before us, and many of us have used no other.
Why should we change to some other brand when

WHYTE & MACKAY'S
SPECIAL SELECTED
HIGHLAND WHISKY

has never failed to give full and complete satisfaction?
You will always find the local trade well supplied with this brand.

Printing

We have facilities equal to any printing office in Eastern Canada for the production of high-grade work.
Job Printing of all kinds promptly attended to.
Phone today Main 1910
Standard Job Printing Co.
St. John, N. B.

RAILWAYS.

CANADIAN GOVERNMENT RAILWAYS
Saint John—Montreal.
MARITIME EXPRESS.
Will leave St. John 8:10 p. m. Daily.
OCEAN LIMITED
Will leave Halifax 8:00 a. m. Daily except Sunday.

STEAMSHIPS.

DONALDSON LINE
From Glasgow From St. John
Jan. 20 S.S. "Polaris" Feb. 10
Jan. 23 S.S. "Omdal" Feb. 13
Feb. 1 S.S. "Parthenia" Feb. 25
(Dates subject to change)
Freight Rates on Application to
The Robert Reford Co., Ltd.
Agents, St. John, N. B.

Money To Loan

On Mortgage
On Freehold or Leasehold
At Current Rates.
CHAS. A. MACDONALD & SON
49 Canterbury St.

FREDERICKSON ELECTRIC CO.

6 p.c. First Mortgage Bonds
with 30 p.c. common stock bonus.
Price 98 and accrued interest.
H. M. BRADFORD, Halifax

Monthly Income Policy

New York Life Ins. Co.
J. W. V. LAWLOR, Agent
P.O. Box 174, St. John, N. B.

BRIDGES

Buildings and All Structures of Steel and Concrete
Designs, Estimates and Investigation
T. CUSHING, N. S. (M. L. T. Boston)
Civil Engineer
Craigston Ave., Halifax, P. U. S. A.
Work in Maritime Provinces Specially Solicited.

W. Simms Lee, F. C. A.

Chartered Accountant
and Auditor.
Queen Building, HALIFAX, N.S.
177 Hulse St. Box 723

DOMINION COAL COMPANY

GENERAL SALES OFFICE
18 ST. JAMES ST., MONTREAL
For Grates—Old Mines Sydney and Cannel.
For Ranges and Stoves—Reserve and Springhill.
For Blacksmith Purposes—Georges Creek, Sydney Slack.
Also all sizes of best Hard Coal
R. P. & W. F. STARR, Ltd.
49 Smythe St. 1-159 Union St.

Scotch Coals

I am now booking orders for 100 tons Scotch Coal that I expect will be here shortly. Let me have your order at once. Please don't telephone. I want to see those preferring the Scotch and talk business straight.
JAMES S. MCGIVERN, 5 Mill Street.

LANDING

Fresh Mine Acadia Picton Lump Sizes
GEORGE DICK, 48 Britain St.
Phone M-1116.

STEAM BOILERS

The following new "Matheson" built boilers, are on hand at our works, and are offered for immediate shipment:
1—Inclined type on skids, 50 h.p.
1—Locomotive type on skids, 20 h.p.
Also "Used."
1—Return Tubular type, 140 h.p.
Complete details and prices will be mailed upon request.

I. MATHESON & CO. Limited

Boiler Makers
New Glasgow, Nova Scotia

STEAMSHIPS.

PLEASURE CRUISES BY
R.M.S.P. TO WEST INDIES
FORTNIGHTLY SAILINGS
By Tor-Sea Mail Steamers.
SPECIAL FACILITIES FOR TOURISTS.
Next sailing from
St. John, N. B., Feb. 11, '16
R.M.S.P. "Carnegie," Feb. 11, '16
R.M.S.P. "Carnegie," Feb. 11, '16
The huge ship starts at 9 a.m. from St. John, N. B., for St. John, N. B., for St. John, N. B.

AMERICAN LINE

NEUTRAL FLAG STEAMERS
NEW YORK TO LIVERPOOL
S.S. "Philadelphia" Feb. 13
S.S. "St. Paul" Feb. 13
S.S. "Finland" Feb. 13
S.S. "New York" Feb. 26
(Dates subject to change)
Passage Rates on application to
THE ROBERT REFORM CO., Limited,
Agents, St. John, N. B.

FURNESS LINE

From London From St. John
Dec. 31 Shenandoah Feb. 13
Jan. 30 Kanawha Feb. 15
Feb. 10 Rappahannock Feb. 26
WM. THOMSON & CO., LTD.
Agents, St. John, N. B.

MANCHESTER LINE

From Manchester From St. John
Jan. 16 Manchester Corporation Feb. 7
Jan. 22 Manchester Corporation Feb. 13
Jan. 30 Manchester Corporation Feb. 19
WM. THOMSON & CO., LTD.
Agents, St. John, N. B.

Head Line

St. John to Dublin
S. S. Torr Head Feb. 26
St. John to Belfast
S. S. Bengore Head Feb. 4
S. S. Bray Head Feb. 5
St. John to Avonmouth
S. S. Innishow Head Feb. 5
Subject to change.
WM. THOMSON & CO., LTD.
Agents.

EASTERN STEAMSHIP LINES.

All-the-Way-by-Water.
INTERNATIONAL LINE.
Steamship North Star
Will leave St. John Thursdays at nine a.m. for Lubec, Eastport, Portland and Boston.
Returning leaves Boston Mondays at nine a.m. via Portland, Eastport and Lubec, due at St. John Tuesday afternoon.
MAINE STEAMSHIP LINE
Between Portland and New York.
Steamships North Land and Herman Winter.
Reduced Fares—Reduced Stateroom Prices.
Schedule disturbed—Information upon request.
City Ticket Office, 47 King Street.
A. G. CURRIE, Agent, St. John, N. B.
A. E. FLEMING, T. F. & P. A., St. John, N. B.

THE MARITIME STEAMSHIP CO. (LIMITED)

Until further notice the S. S. Coos Bay Bros. will run as follows:
Leave St. John, N. B., Thorne Wharf and Warehouse Co., on Saturday, 7:30 a.m., for St. Andrews, calling at Digby Harbor, Beaver Harbor, Black's Harbor, Back Bay, or Letete, Deer Island, Red Store, St. George, returning leave St. Andrews Tuesday for St. John, calling at Letete or Back Bay, Black's Harbor, Beaver Harbor and Digby Harbor, tide and weather permitting.
AGENT—Thorne Wharf and Warehouse Co., St. John, N. B.
Thos. 2331, Manager, Lewis Coos Bay, Black's Harbor, N. B.
This company will not be responsible for any debts contracted after this date without a written order from the company or captain of the steamer.

CHANGE OF TIME.

Fail and Winter Time Table of the GRAND MANAN S.S. CO.
Grand Manan Route—Season 1916-17
After October 1st, 1916, and until further notice, a steamer of this line will run as follows:
Leave Grand Manan Mondays at 7:30 a. m. for St. John, via Eastport, Campbell and Wilson's Beach.
Returning leave Turnbull's Wharf St. John, Wednesdays at 7:30 a. m. for Grand Manan, via St. Andrews, Eastport and Campbell.
Leave Grand Manan Thursdays at 7:30 a. m. for Grand Manan, via St. Andrews, Eastport and Campbell.
Leave Grand Manan Saturdays at 7:30 a. m. for St. Andrews.
Returning same day, leaving St. Andrews at 1 p. m., calling at Campbell and Eastport both ways.
Atlantic Standard Time.
L. C. GUTHRIE, Manager, Grand Manan.

Live Sporting

ICE RACING AT WOODSTOCK

Special to The Standard.
Woodstock, Feb. 6.—The following is the result of the horse races on the river on Saturday afternoon:
Class A. Pace.
Bobby D. John Young 3:14
Barney Bourbon, H. W. Cowan, 1:23
Time, quarters—33, 33, 35.
Class B. Mixed.
Harry M. H. M. Martell 1:11
Rev. F. H. J. Dibble 3:33
Lady Behar, J. W. Gallagher 2:32
Time, quarters—35, 35, 34 1/4.

36TH BATTERY TRIMS 104TH

Special to The Standard.
Fredericton, Feb. 6.—In Fredericton hockey league on Saturday night Gibson team went into second place winning from U.N.B. by score of 3 to 2. The 36th Battery won the second game of the double-header, defeating "C" Co. 104th Battalion by a score of 18 to 2, the infantrymen's team being weakened by the absence of several of the best players while the battery skates is growing stronger with each game.

OLD COUNTRY FOOTBALL

ENGLISH LEAGUE.
Northern Division.
Burnley, 2; Everton, 1.
Bury, 2; Manchester United, 1.
Liverpool, 1; Blackpool, 0.
Manchester City, 4; Rochdale, 1.
Preston North End, 1; Oldham Athletic, 0.
Stockport County, 1; Southport Central, 0.
Stoke, 1; Bolton Wanderers, 1.
Midland Division.
Bradford, 3; Huddersfield Town, 0.
Derby County, 2; Notts County, 0.
Hull City, 2; Sheffield United, 0.
Lincoln City, 0; Bradford City, 1.
Lincoln City, 4; Barnsley, 1.
Notts Forest, 1; Leicester Fosse, 0.
Sheffield Wednesday, 2; Grimsby Town, 1.
London Division.
Luton, 4; Brentford, 3.
Pulham, 0; Reading, 0.
Croydon, 3; Clapton Orient, 0.
Western United, 2; Tottenham Hotspur, 0.
Crystal Palace, 1; Millwall, 5.
Queens Park Rangers, 0; Chelsea, 3.
Arsenal, 1; Wadford, 1.

SCOTTISH LEAGUE.

Aberdeen, 0; Celtic, 4.
Clyde, 1; Aldrie, 2.
Ayr United, 1; St. Mirren, 1.
Dumbarton, 1; Hearts, 1.
Hamilton, 4; Dundee, 0.
Hibernians, 2; Falkirk, 1.
Queens Park, 1; Kilmarnock, 2.
Bangers, 1; Morton, 0.
Motherwell, 3; Third Lanark, 1.
Raith Rovers, 2; Partick Thistle, 0.

HOCKEY ON WEDNESDAY.

The hockey match on Wednesday night in the Queen's Rink, when the Siege Battery team and the St. Johns aspect, will settle the question as to the leadership of the league for the time being. Each team has won two games, and have defeated the same teams, by almost the same scores, and it looks as if they should be pretty evenly matched. The St. Johns have secured a new defence man who formerly played the game with the Halifax Socials. He was out at practice on Saturday night and showed up well. It is expected that he will be in the lineup on Wednesday. Fitzgerald has been obliged to leave the team, having gone to Montreal to undergo an operation, so the procuring of the new man is a welcome addition.

Bringing Up Fa

That Ed
felder of
twenty-one
brings up
Federal Le
APPC
Ottawa,
Robert Gr
pointed an
and fal

Bringing Up Fa

That Ed
felder of
twenty-one
brings up
Federal Le
APPC
Ottawa,
Robert Gr
pointed an
and fal

Bringing Up Fa