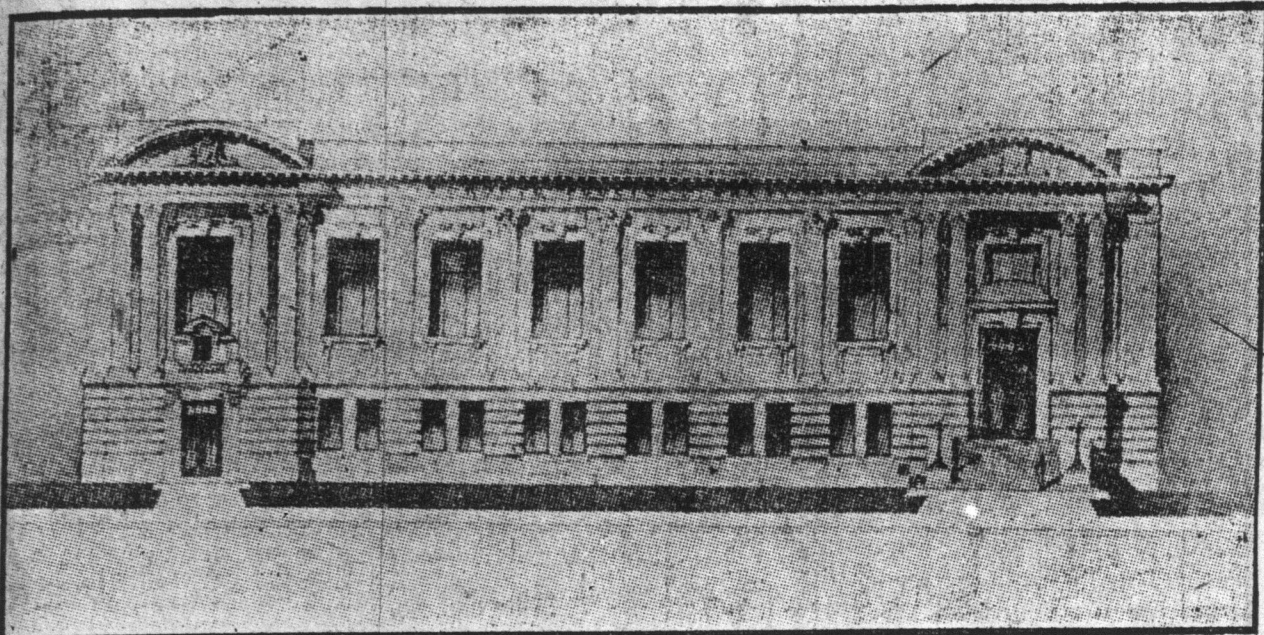


TORONTO REAL ESTATE

The New Library as it Will Appear When Completed.

The design of Architects Wickson & Gregg and A. H. Chapman, which gained the approval of the Public Library Board over a large number of competitive drawings.



The accompanying cut is taken from the accepted design for the new Carnegie Library which is being erected at the corner of College and St. George streets, from the plans of Wickson & Gregg and A. H. Chapman, associated architects. The estimated cost of the structure is \$175,000.

The design is monumental in character of the modern French Renaissance style. The first story will be built of Ohio grey stone dressed, and the upper story of grey brick, with stuffed terra cotta trimmings, including the main cornice.

The main front facing College-street is flanked by two pavilions, the east or right hand one being the main entrance, giving access to the reading room, and the western pavilion giving entrance to the branch circulating library and first floor.

There is also an entrance from St. George-street which communicates with the secretary's offices, attendants' quarters, etc.

As the name chosen by the board intimates, the new building is for a reference library, so that its whole character is based on this intention. The point which differentiates this particular building from any yet attempted for library purposes in Canada and most of the cities of the United States consists, first, in the almost entire elimination of useless halls and passages; second, in the centralization of the whole of the work of the institution so that the attendants at the delivery desk have complete observation over the entire floor and at the same time are in touch with the cataloguing-room and stack-house, and third, that while the whole building is of fire-proof construction, the stack-room is entirely isolated from the rest of the structure in order to safeguard the books. The walls are of brick and stone, the different floors are of iron and cement, so that little wood is employed other than the furniture. The cataloguing-room is immediately over the bindery—which is supplied with a hoist—and has on one side the stack-house and on the other the rear of the card cataloguing case. The plan is also so devised as to admit of an extension without interfering with the light. The stack-house and reading rooms are calculated to hold about 300,000 volumes.

The ground floor will contain a small branch library of about 10,000 volumes which will communicate with the circulating library by means of a door at

the western end. An ample reading room with railed divisions for teachers and children will be separated from the section set apart for the general readers. On the same floor on the St. George-street side offices and quarters for the staff will be located.

The first floor will be attained by an easy flight of stairs from the southeast corner leading into the main entrance hall to the reference library. The main reading room will be 136 feet long by 50 feet wide. Immediately back of the reading-room are the cataloguing and delivery rooms and still further back is the main building of the stack-house 72 feet by 40 feet. This apartment will comprise five storeys of iron and glass construction. This building is isolated as aforementioned from the rest of the building, the only entrance into it being from the rear of the delivery room.

On the St. George-street side are the offices of the board and librarian and a long gallery for the keeping and use of bound volumes of newspapers and art books. The second story, reached by a staircase from the main hall, is composed of one long gallery facing St. George-street, lighted with skylights. The walls of this compartment will display rare maps and local pictures.

BUILDING PERMITS

The list of building permits issued by the city architect from June 1 to June 6 shows:

Fred Elliot, 2-storey and attic brick dwelling, near Sorauren-avenue, on s.s. Geoffrey-street, \$3000
Horne Furniture Company, 2-storey brick store, n.w. corner Queen and Parliament-streets \$15,000
Hilton Bros., 2-storey brick and steel stable and wagon-shed, near Broadview-avenue, in rear of 613 Gerrard-street \$2500
Col. McDonald, 2-storey brick addition to dwelling, near Lowther-avenue, on 445 Huron \$3000
W. B. Dury, 2 1/2-storey brick dwelling, near Devon-street, on 64 Concord-avenue \$3000
Alexander Yacht Club, 2-storey frame club house, foot of Cherry-street \$1500
W. Caldwell, 2-storey frame dwelling, on Centre Island \$2000
C. Bonckham, 2-storey and attic roughcast dwelling, brick front, near Hallam-street, on Dovercourt-road \$2000
J. MacGillivray, 2-storey roughcast dwelling, brick front, near Wallace-avenue, on Symington-avenue \$1500
Robert Bedley, 2-storey brick dwelling, near Geoffrey-street, on w.s. Sorauren-avenue \$2500
Brighton Laundry Company, 2-storey brick laundry building and stable, corner Bloor and Shaw-streets \$10,000
Geo. E. Case, 2 pair semi-detached 2-storey brick dwellings, near Bloor-street, on Margaretta-street \$8000
J. J. Walsh, 2 pair semi-detached 1 1/2-storey brick dwellings, s.w. corner Huron and Cecil \$12,000
J. J. Walsh, 2 pair semi-detached 1 1/2-storey brick dwellings, s.w. corner King and Cowan \$18,000
James Morrison, 2 pair semi-detached 2-storey brick dwellings, near York-street, on Pearl \$13,000
P. Booz, 2 1/2-storey brick dwelling, opposite Woolfrey-avenue, near Broadview-avenue \$2500
P. Francis, 1 pair semi-detached 2-storey roughcast dwellings, brick fronts, near Yarmouth-road, on 126-128 Bolton-avenue \$3500
E. J. Linnington, alterations to stores and dwellings, s.w. corner Bathurst and Arthur-streets \$5000
O. P. Dodge, 1 pair semi-detached 2-storey brick veneer dwellings, on 665-667 St. Clarens \$2300
M. James, 2-storey roughcast dwelling, brick front, near Hallam-street, on Ossington-avenue \$2000
Lansdowne-avenue, on s.s. Wallace-avenue \$5000
Fred Dunn, 2-storey roughcast dwelling, brick front, near Christie-street, on s.s. Dupont-street \$1500
J. Palmer, 1 pair semi-detached 2-storey roughcast stores and dwellings, brick fronts, near Wallace-avenue, on w.s. Lansdowne-avenue \$3000
William Prince, 1 pair semi-detached 2-storey roughcast dwellings, brick fronts, near Yarmouth-road, on s.s. Christie \$3000
John Polesky, 2 detached 2-storey roughcast dwellings, brick fronts, near Cummings-street, on 126-128 Bolton-avenue \$3500
Hudson Bros., 2-storey seven attic brick dwelling, near College-street, on e.s. St. Clarens-avenue \$2000
John Thompson, 2-storey brick dwelling, near Lakeview-avenue, on 38 Churchill \$3000
R. B. Burdell, 1 pair semi-detached dwelling, near College-street, on e.s. Givens-street \$3500
B. J. Brandon, 2 pair semi-detached 2-storey brick dwellings, near Triller-avenue, on Grafton-avenue \$3000
J. Archer, 2-storey brick dwelling, near Royce-avenue, on e.s. Lansdowne-avenue \$6000
Virtue & Co., 1-storey brick addition to warehouse, near Gerrard-street, on 337 Church-street \$2200
W. J. Hewet, 2-storey brick dwelling, near Gerrard-street, on e.s. Leslie-street \$2000
John Burgess, 3-storey brick store and dwelling, near Bloor-street, on 766-768 York-street \$9000
Love Bros., 4 attic 2-storey roughcast dwellings, brick fronts, near Gerrard-street, on w.s. Galt-avenue \$3000
Hunt & Biglow, 1 pair semi-detached 2-storey brick dwellings, near College-street, on e.s. Givens-street \$3400
A. C. Ransom, 2-storey brick dwelling, near Schiller-avenue, on w.s. Russell, Hill-road \$9000
Fred Ingram, 1 pair semi-detached 2-storey roughcast dwellings, brick fronts, near Gerrard-street, on w.s. Logan-avenue \$3000
L. S. McGiffin, 2-storey and attic brick dwelling, near Elm-avenue, on 15 Dunbar-road \$5750
Love Bros., Limited, 2 pair 2-storey roughcast dwellings, brick fronts, near Austin-avenue, on w.s. Pape-avenue \$4400
Love Bros., Limited, 5 attic 2-storey roughcast dwellings, brick fronts, near Gerrard-street, on w.s. Pape-avenue \$7200
Byron Fraser, 5 attic 2-storey roughcast dwellings, brick fronts, near Logan-avenue, on s.w. corner Langley-avenue \$7200
Love Bros., Limited, 1 pair 2-storey roughcast dwellings, brick fronts, near Gerrard-street, on w.s. Pape-avenue \$1800
Thos. Fitzpatrick, 2-storey roughcast dwelling, brick front, near Bloor-street, on 650 Brock-avenue \$1500
C. Muffitt, 1-storey brick store, near Davison-road, on 152 Avenue-road \$1000
J. Fleming, 2-storey and attic brick dwelling, near Lansdowne-avenue, on 1207 West Bloor-street \$8500
Geo. Alexander, 1 pair semi-detached 2 1/2-storey brick dwellings, near Dundas-street, on 35-40 Lynd-avenue \$5000
C. Elmes, 2-storey brick stable, near Clinton-street, on 615 College-street \$1500
E. C. Stoutenberg, 3 attic 2-storey

200 NEW HOMES

Completely Furnished

At \$2500 Each

On Easy Monthly Payments

Realizing the rapidly growing demand for moderate priced homes we have undertaken to build 200 houses in a choice residential portion of the city, within fifteen minutes' ride on street car from Queen and Yonge Streets, and will offer them completely furnished for

\$2500 ON EASY PAYMENTS

Well Constructed Houses

The houses are well built in every particular. We can vouch for the character of their construction in every respect. We are practical builders and know our business. We have our own millwork factory, our own galvanized iron plant. We do our own plumbing and our own mason work. In fact we have organized our business so that every part of the work is done by ourselves and only one profit is figured on. We save 20% in labor and materials, because of our perfectly organized system.

Every house is of semi-detached design, with brick fronts and cement floor in basement. The general lay-out has been carefully and thoughtfully studied so as to provide for every modern convenience. Sanitary enameled plumbing is used throughout and the hot water tank is connected with the furnace in the basement, thus eliminating the necessity of connecting the tank with the kitchen range. Side wall registers are used and the furnace is best made.

All rooms are tastily decorated with the latest artistic design in wall paper and the walls above the wainscot in bathroom are covered with an enameled paper.

The entire house is carpeted, and is piped throughout for gas with the latest design of fixtures.

The woodwork throughout is grained in imitation oak. Our knowledge gained from years of experience as builders has made it possible for us to design and build in these houses model homes.

Perfectly Furnished Houses

Every article of Furniture has been carefully selected and is most modern and cosy-like in arrangement and design. The fact of our buying our Furniture by the trainload permits us to give the greatest value for the least amount of money.

THE PARLOR	THE DINING ROOM	THE KITCHEN
Each parlor is appropriately furnished with a most artistic parlor suit, including chairs, settee, etc., as well as New Scale Williams Piano. It is attractively carpeted.	This room has a large extension table, a set of six quarter-cut oak chairs, a pretty green plush-covered couch and a built-in sideboard.	Has a large work table with sink above end, over which is "built-in" a cupboard that connects with the sideboard in the dining-room.
THE HALLS AND STAIRWAY	THE BEDROOMS	THE BATHROOM
These are all prettily decorated and carpeted and furnished complete.	The bedrooms are all completely furnished with solid brass and iron bedsteads and quarter-cut oak dressers, washstands, tables and chairs.	This room is most completely furnished with enameled ware.

This is the greatest offer ever made to homeseekers in Canada, and to prove to you what we claim we have arranged to have one of the houses, **completely furnished**, on exhibition at 996 Gerrard St. E., on and after Saturday, June 8th, all day and evenings.

We are building only 200 of these houses this year, and will sell them furnished or unfurnished.

Come early and get first choice as to location.

LOVE BROTHERS, LIMITED,
CONTRACTORS AND BUILDERS,
1000 Gerrard St. East, Toronto.

AN ORDER FOR

=100=

NEW SCALE WILLIAMS PIANOS

THE largest retail order for Pianos ever placed in Canada is given to The R. S. Williams & Sons Co., Limited, Toronto's largest Music Dealers, by Love Bros., Contractors, to be placed in one hundred new completely furnished homes. A copy of the big order:

Office and Planing Mill Phone Main 3609

Love Brothers, Limited

Builders and Dealers in Builders' Supplies

1000 Gerrard Street East of Pape Ave.
Messrs. The R. S. Williams & Sons Co., Limited.
143 Yonge Street, Toronto, Ont.

Gentlemen:—
Agreeable with our conversation of this morning we take pleasure in hereby confirming our order for 100 New Scale Williams Pianos, No. 44 (375 style) which you will understand are to be delivered to us promptly as possible upon order, including stool.

We might state this order is placed after thoroughly investigating the different makes of pianos, and is decided upon owing to the excellent quality of tone, finish and workmanship which we found in your piano, and which we consider unequalled by any other.

Very truly yours,

(SIGNED)

Love Bros., Limited,

Certainly a convincing testimonial of the quality and sterling worth of these wonderful instruments.

THE WILLIAMS & SONS
R.S. CO., Ltd.
143 YONGE STREET

HENRY F. SWALM
Carpenter, Builder and Valuator
199 Sherbourne St., Toronto

brick dwellings, s.e. corner Manning and Barton-avenues \$3000

Chester.
CHESTER, June 7.—The first anniversary of St. Andrew's Mission Church will be celebrated next Tuesday by a tea party on the land adjoining the church. Tea will be served from 5.30 to 7.30 p.m., followed by a program.

NEW FACTORY

FOUR FLATS AND BASEMENT. HALF MILL CONSTRUCTION WITH LIGHT ON THREE SIDES. SUITABLE FOR WAREHOUSE OR MANUFACTURING. NEAR UNION STATION.

PRICE \$38,500

RICE, KIDNEY & CO.
Tel. Main 1345 16 VICTORIA STREET