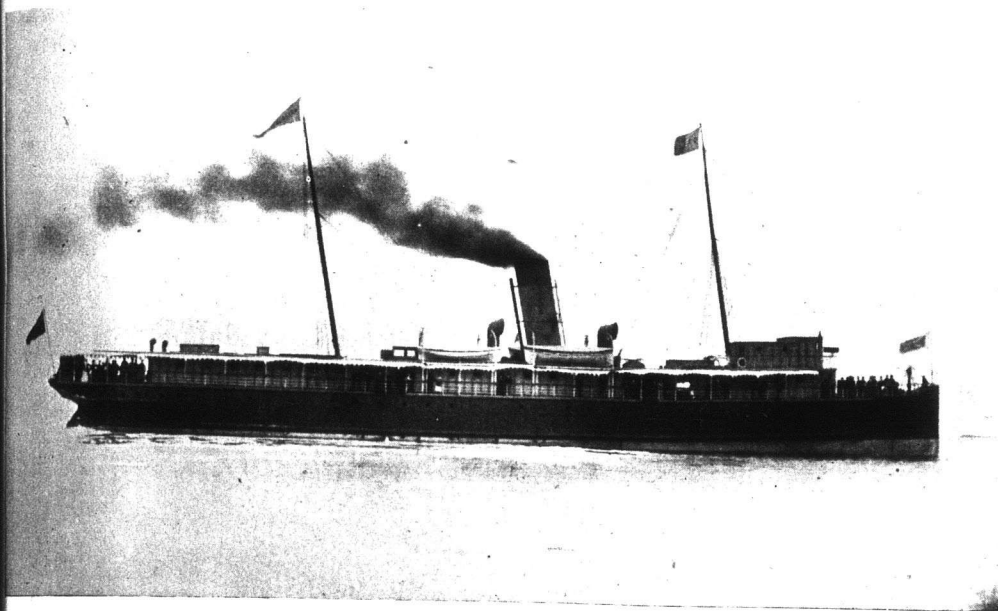


The Charlottetown Steam Navigation Co., Ltd.



STEAMERS

"Northumberland" and "Princess"

Leave as below every day. Sundays excepted:—

From POINT DU CHENE, on arrival of 11.50 train from St. John, for SUMMERSIDE, connecting with express train for Charlottetown and Tignish.

From SUMMERSIDE, on arrival of morning train from Charlottetown and all stations of P. E. I. R., for POINT DU CHENE, connecting with afternoon train for ST. JOHN, BOSTON and MONTREAL.

Connection at Moncton with train for Canada and N. B., at St. John with C. P. R. and railway for U. S. and Canada, also at St. John with Steamers of International and Dominion Atlantic R. R. Lines Tuesday and Saturday afternoons for Boston direct, due following day at noon; and on Monday, Wednesday and Friday mornings with steamers for Eastport, Portland and Boston.

From PICTOU about half-past three, on arrival of day train from Halifax and Sydney for CHARLOTTETOWN.

From CHARLOTTETOWN for PICTOU at 8.30 a. m., connecting there with day trains for Cape Breton and Halifax, and at North Sydney with steamer "Bruce" for Newfoundland.

At HALIFAX with C. A. and Plant Line for Boston. Passengers from all places on P. E. I. Railway east of Charlottetown can leave home 24 hours later than if joining Plant Steamers in Charlottetown and connect with same steamer in Halifax.

Through tickets to be had at Grand Trunk, Canadian Pacific, Intercolonial and P. E. I. Railways, and on the Company's Steamers and connecting lines in United States and Canada.

Steamers are run on Eastern Standard Time.

F. W. HALES, Secretary.

Charlottetown, P. E. I.

Tourists

me
ish
ast
ker

same goods

75, \$17.50.

95, \$10.55.

D

usiest Street.