

MILLERS' AND MANUFACTURERS' INSURANCE COMPANY.

HEAD OFFICE,
24 Church Street, Toronto.

JAMES GOLDIE, Guelph, President.
W. H. HOWLAND, Toronto, Vice-President.

DIRECTORS.
H. McCULLOCH, GALT
GEO. PATTISON, PRESTON
W. H. STOREY, ACTON.
A. WATTS, BRANTFORD
S. NEELON, ST. CATHARINES
W. BELL, GUELPH
H. N. BAIRD, TORONTO
W. WILSON, TORONTO
J. L. SPINK, TORONTO

HUGH SCOTT, Managing Director.
DOUGLAS SUTTON, Secretary.
GEO. HANSON, Inspector

OBJECTS.

To prevent by all possible means the occurrences of avoidable fires.

To obviate heavy losses from the fires that are unavoidable by the nature of the work done in mills and factories.

To reduce the cost of the insurance to the lowest point consistent with the safe conduct of the business.

The Combined Losses and Expenses on the business of 1887 was under Fifty per cent. (50%).

Victoria Wire Mills.

ESTABLISHED 1859.



Perforated Sheet Metals,
Steel and Iron Wire Cloth,
WIRE GUARDS FOR MILL WINDOWS, ETC.

THE B. GREENING WIRE CO., (Ltd.)
HAMILTON, ONT.

Send for Catalogue, mentioning your requirements.

The Canadian Office
& School Furniture Co.
(LTD.)

MANUFACTURERS OF

Office, & School,



Church and Lodge
FURNITURE

24 FRONT ST. WEST,
- TORONTO.
WORKS AT PRESTON, ONT.

SEND FOR CATALOGUE.

PATENTS

Obtained in Canada, United States, Great Britain and all Foreign Countries.
TRADE MARKS, DESIGNS AND COPYRIGHTS REGISTERED.

Examinations and Reports as to validity. Searches made. Infringements investigated. Assignments and Agreements drawn. Advice on Patent Laws, etc.

FETHERSTONHAUGH & CO.,

CANADIAN BANK OF COMMERCE BLDG.
(Second Floor).

Solicitors of Patents and Experts
in Patent Causes.

SUBSCRIBED CAPITAL, \$100,000.
AMOUNT ON DEPOSIT WITH THE GOVERNMENT OF CANADA, \$54,724.

SIR ALEX. CAMPBELL, K.C.M.G. PRES.
(Lieut. Govr. of Ontario)

JOHN L. BLAIR, ESQ. VICE PRES.

THE BOILER INSPECTION and Insurance Company of Canada.



CONSULTING ENGINEERS.

G.C. ROBB, Chief Engineer. A. FRASER, Secy. Treas.

HEAD OFFICE, 2 TORONTO ST.

TORONTO.

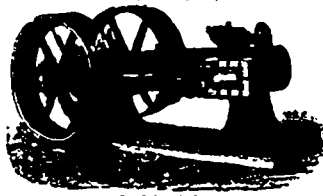
Prevention of Accident our chief aim.

Economy of Fuel Secured.

E. LEONARD & SONS,

LONDON,

MANUFACTURERS OF



ONTARIO.

Leonard Engines
Leonard-Tangye Engines
Leonard-Ball Automatic Cut-off Engines
Leonard-Ball Automatic Compound Engines
Leonard-Ball Automatic Compound Condensing Engines
Standard Stationary, Locomotive & Upright Steel Boilers

THE "NEW AMERICAN" TURBINE

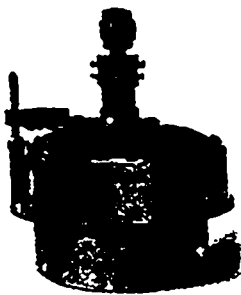
Patented in Canada.

Specially adapted for driving Electric Plant, Roller Mills, Factories, etc., where economy of water, ease of control, reliability and durability are requisites. Horizontal and Vertical Wheels in 15 sizes.

Sole Dominion Agents for "Fruen's Minneapolis" Water Wheel Governor. It is sensitive, powerful and durable.

ADVICE AND PLANS FOR IMPROVEMENT OF WATER POWERS.

WM. KENNEDY & SONS, OWEN SOUND, ONT.



GEORGIAN FOUNDRY,

MEAFORD, ONT.

C. Barber, - Proprietor.

MANUFACTURER OF

IMPROVED CANADIAN TURBINES,

The Best and Cheapest, Most Reliable and Economical Water Wheel in the Market.

Agents for Maritime Provinces: MESSRS. A. ROBB & SONS, Amherst, Nova Scotia.

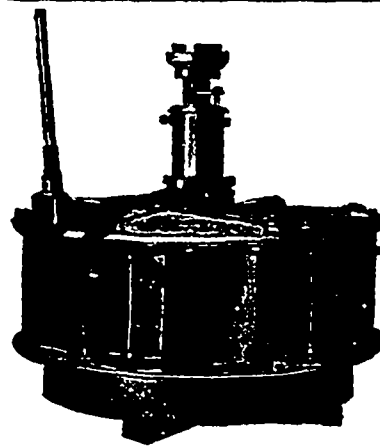
Also complete Saw Mill Outfits and Supplies.

SAW CARRIAGES A SPECIALTY.

Shafting, Hangers, Pulleys and Gearing.

A large list of General Patterns.

CORRESPONDENCE SOLICITED.



GOLDIE & McCULLOCH

Galt, - Ontario,

Have the following Second-hand Machinery, which they offer cheap and on reasonable terms.

- Iron Turning Lathe, 18 feet bed, 32 inch swing.
 - 50 H. P. Automatic Cut-off Engine, can be seen at Hamilton Electric Light Co.'s Station, Hamilton.
 - 50 H. P. Inglis & Hunter Engine.
 - 50 H. P. Dickey, Neill & Co. engine, splendid for Saw Mill, recently replaced by a Wheelock Engine.
 - 50 H. P. Slide Valve Engine, our own make.
 - 35 H. P. Kelley & Co. Engine.
 - 40 H. P. Corliss Engine and 50 H. P. Boiler, only a short time in use, made by Cowan & Co.
 - 30 H. P. Slide Valve Engine, our own make.
 - 25 H. P. Kelley & Co. Engine.
 - 30 H. P. Brown Engine.
 - 20 H. P. Beckett Engine.
 - 25 H. P. Westinghouse Engine.
 - 20 H. P. Slide Valve Engine, at D. Morton & Sons, Hamilton, being replaced by a Wheelock Engine.
- Also at many second-hand Boilers, all thoroughly tested, and complete with all mountings, from 50 H. P. down; also second-hand Planer and Matcher, Moulding Machine and other Wood-working Machines. For particulars address
- GOLDIE & McCULLOCH, Galt, Ont.**

HORIZONTAL · BRAN · DUSTER

Simple in Construction.

Very Light Running.

Perfect in Operation.

Manufactured to suit Mills of any Capacity

BY

A. LAIDLAW & CO.,

1123 Queen St. W., - PARKDALE, TORONTO.

SEND FOR PARTICULARS.

