

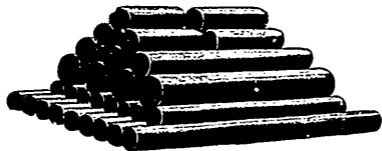


# On Bare Ground

A wagon will run far easier than a sleigh: the one is a rolling, the other a friction *contact* or sliding Contact. So *contact*

## Perfected ROLLER and BALL Bearings

Run easier than an ordinary bearing, no matter



how much oil may be put into the latter.

*POLISHED STEEL ROLLERS FOR MASSEY-HARRIS PERFECTED BEARINGS.*

The Perfected Roller and Ball Bearings introduced into

Massey-  
=Harris

Machines three years ago were well tried and proven to be everything that has been claimed for them before their introduction. They have been a huge success and are pronounced by eminent mechanics and scientists everywhere to be "perfected" in the fullest sense of the term.

Massey-Harris machines for the season of '99 will be fully equipped with Perfected Roller and Ball Bearings.



*POLISHED STEEL BALLS FOR MASSEY-HARRIS PERFECTED BEARINGS.*