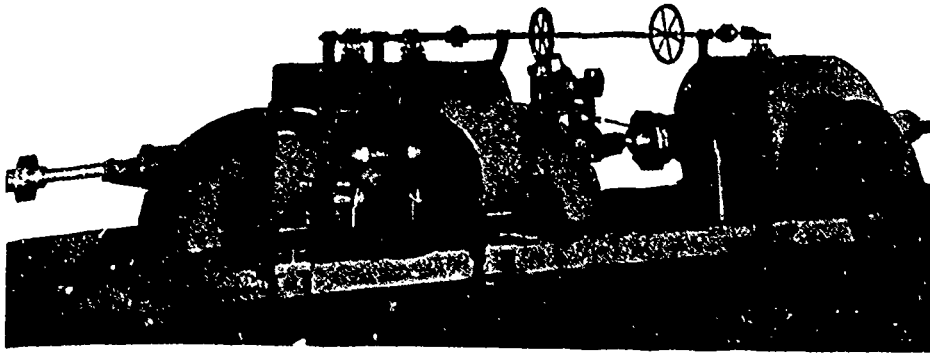


# The McCormick Turbine © All Sizes Tested at Holyoke.....



©

Enormous Power and Higher Efficiency than is obtained from any other make.

Hundreds Driving Electrical Machinery.

Write for Catalogue.

©

This Engraving represents three 21 inch Turbines operating under 64' head, in the Plant of Chas T. Westcott, Baltimore, Md.

## S. MORGAN SMITH CO. - YORK, PA.

### The National Tube Works Company

The Largest Makers of All Sizes and Kinds of  
**Special Wrought Mild Steel and Best Wrought Iron Tubular Goods in the World.**

Control the Manufacture of  
**Wrought Tubular Goods,**  
 —Made of a High Class of Mild Steel from the Ore to the Finished Product—and Unqualifiedly Recommend NATIONAL STEEL PIPE for all uses as Better than any Iron Pipe made.

McKEES PRT, PA.

**TENDERS WANTED**

A Weekly Journal of advance information and public works.  
 The recognized medium for advertisements for Tenders.

**CANADIAN CONTRACT RECORD**  
 TORONTO.

# WANTED

**TO RENT :** Central Station Owners willing to Rent their Plants will oblige by Communicating with the Undersigned.

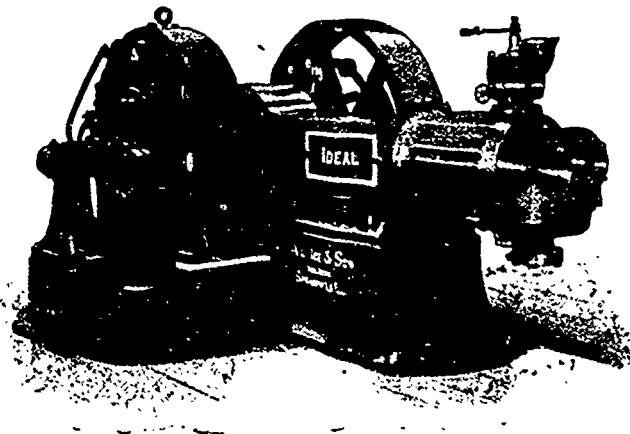
## GEORGE WHITE-FRASER

IMPERIAL LOAN BUILDING - - TORONTO

# THE Goldie & McCulloch Co. LIMITED

MANUFACTURERS OF

**IMPROVED  
 STEAM  
 ENGINES  
 AND  
 BOILERS**



Flouring Mills, And the Erection of Same in the Most Complete Style of Modern Improvement.

Wool Machinery,  
 Wood-Working Machinery  
 Saw Mill, Shingle and Stave Machinery,  
 Fire and Burglar-Proof Safes and Vault Doors.

THE "IDEAL" HIGH SPEED ENGINE, DIRECT-CONNECTED.

**SPECIAL ATTENTION** called to the "WHEELLOCK" IMPROVED STEAM ENGINE, also the "IDEAL" HIGH SPEED ENGINE, cut of which appears above. As being Unequaled for Simplicity, Efficiency and Economy in Working, and Especially Adapted for Electric Lighting, Street Railways, Etc.

## † GALT, ONT.