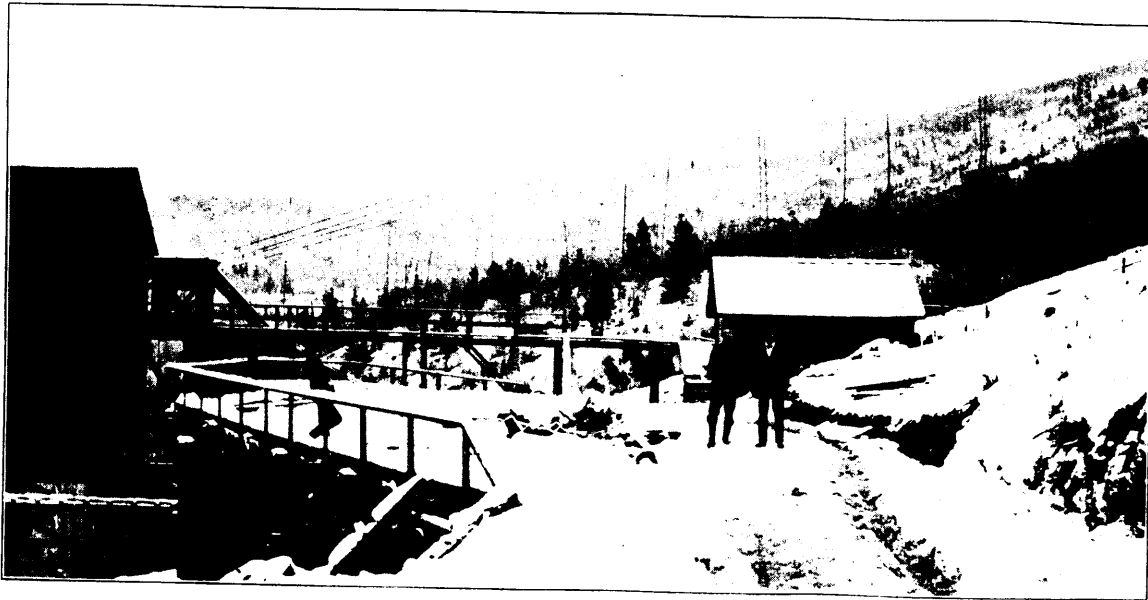


One Man Can handle 1200 TONS per day with a Riblet Patent Automatic Aerial Tramway



YOU CAN FIGURE
THE COST PER TON

More Riblet Tramways are now being
installed than of all the other
systems combined

WRITE FOR DESCRIPTION
AND PRICES

B. C. RIBLET, ENGR.
SPOKANE, Wash.
NELSON, B.C.

The Pulsometer

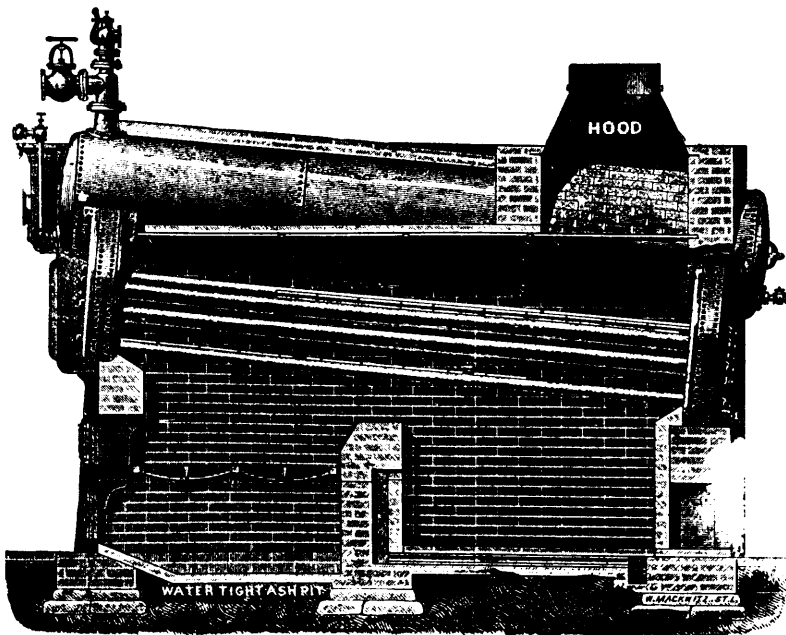
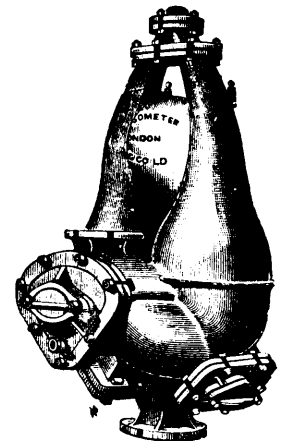
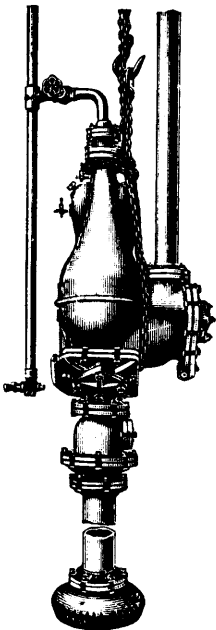
PULSOMETER ENGINEERING CO., Limited, READING, ENGLAND

1,000 TO 100,000 GALLONS PER HOUR

PUMPS ALMOST ANYTHING

**NOISELESS. NOT AFFECTED BY WEATHER.
NO SKILLED LABOR REQUIRED.
MOST ECONOMICAL AND BEST MADE.
NO EXHAUST STEAM. SIMPLE. DURABLE.**

PEACOCK BROTHERS SOLE CANADIAN REPRESENTATIVES
CANADA LIFE BLDG., MONTREAL



HEINE SAFETY BOILER

MANUFACTURED BY

The Canadian Heine Safety Boiler Co.
TORONTO, ONT.

THE HEINE SAFETY BOILER—Made in units
of 100 to 500 h.p., and can be set in batteries of
any number. Suitable for Mines, Pulp Mills, Water
and Electric Installations, and large plants generally.
The best and most economical boiler made.