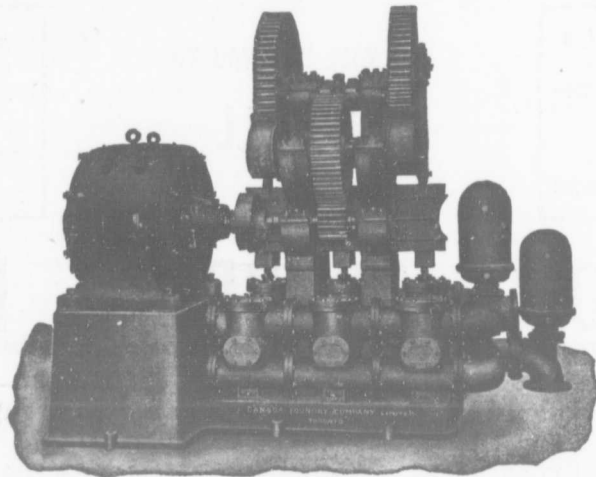


WATERWORKS PUMPS

Motor
Driven



Steam
Driven

Large Capacity and High Pressure

Waterworks Supplies

Cast Iron Pipe, Valves, Hydrants, Fountains,
Water Towers, Stand Pipes, Boilers, Etc.

CANADA FOUNDRY COMPANY LIMITED

Head Office and Works: TORONTO, ONT.

District Offices: MONTREAL HALIFAX OTTAWA WINNIPEG CALGARY VANCOUVER ROSSLAND

THOS. J. DRUMMOND,
President.

JAMES T. McCALL,
Secretary-Treasurer.

C. ED. GUDWILL,
Vice-President.

Montreal Pipe Foundry Co., Limited

Special
Castings
Flange Pipe
Branches
Hydrants
Valves



CAST IRON PIPE

Valve Boxes
and
general
Water
Works
Supplies

Works at: { LACHINE, QUE.
THREE RIVERS, QUE.
LONDONDERRY, N. S.

Combined daily capacity:
175 Tons Pipes and Castings.

HEAD OFFICE CANADA LIFE BUILDING.

MONTREAL

JAMES THOMSON, President. J. G. ALLAN, Vice-President. JAMES A. THOMSON, Secretary. ALEX. L. CARTSHORE, Treasurer.

THE CARTSHORE-THOMSON PIPE & FOUNDRY CO. LIMITED.

Manufacturers of

Flexible and Flange Pipe,
Special Castings and all kinds of
Waterworks Supplies



CAST IRON PIPE

3 inches to 60 inches diameter.

For Water, Gas, Culvert and Sewer

MONTREAL, ONT.