



PLATE 51. *PICEA NIGRA*. Tangential section through the spring wood showing the structure of the two forms of medullary rays. $\times 46.8$

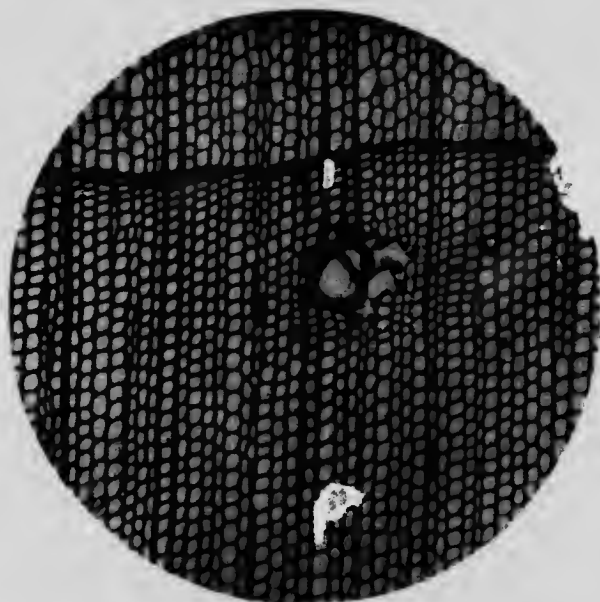


PLATE 52. *PINUS MONTICOLA*. (Type of soft pines, Sec. I.) Transverse section showing the large and thin-walled tracheids of the spring wood, the very thin and open summer wood, the large resin canals with the associated parenchyma broken out. $\times 46.8$