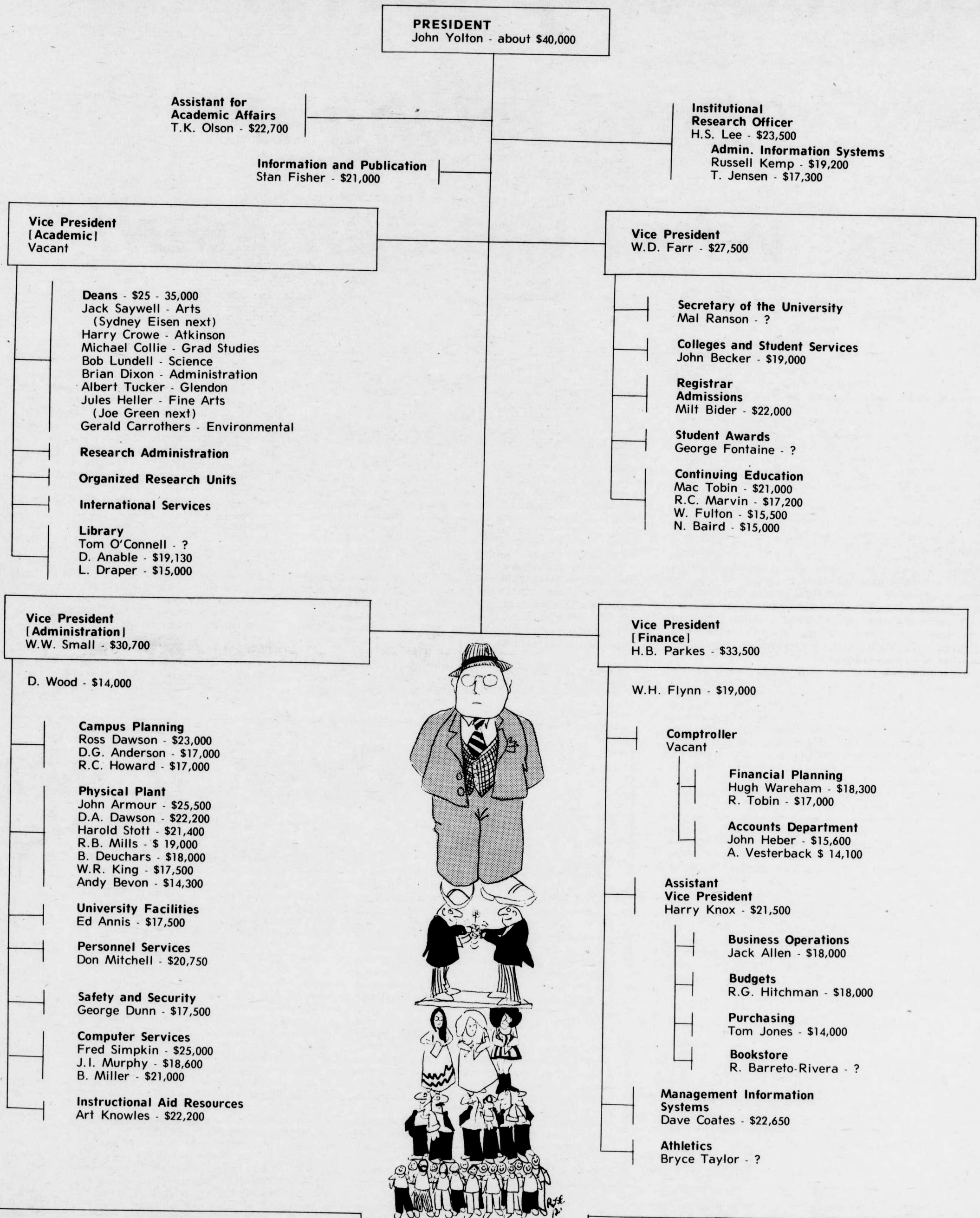


How the bucks stack up at York



FACULTY			
	Mean Salary	Median Salary	Number at York
Full Professor	\$25,474	\$25,043	181
Associate Professor	\$17,848	\$17,650	225
Assistant Professor	\$14,346	\$14,165	300
Lecturer	\$11,764	\$11,760	184
			890

Administrative stipend for department heads is a minimum of \$1,500 per year. York 1972-73, from Statistics Canada

SUPPORT STAFF	
Median Salary for all classifications — \$6,100	
Salary Range in largest classification (4) — \$5,860-\$7,131	
CUPE WORKERS	
Housemaids	\$ 6,510
Cleaners	\$ 6,552
Groundskeepers	\$ 7,800
Drivers	\$ 8,632
Tradesmen 1	\$11,148
Tradesmen 2	\$12,708
Tradesmen 3	\$11,876
As of Jan. 1, 1973	