

## No Damage at these Curves!

*Entrance to Queen Victoria Park. Niagara Falls, Ont. Roadway surface treated in June 1918 with "Tarvia B,"*

When swift and heavy automobiles sweep around the bend of an ordinary macadam road the tires slip sidewise—not enough to skid, to be sure, but enough to rub and rasp the brittle macadam until the stones loosen and the surface ravels.

*No road is better than its curves.*

The curves are always the first spots in a road that needs repair.

With plain macadam construction the curves are a *constant source of trouble and expense.*

Not so with Tarvia-macadam: Note the excellent condition of the curves in the Tarvia roads pictured here.

Curves have no terrors for Tarvia, because when it is used as a binder it forms a tough matrix for the crushed stone. Not only has Tarvia greater bonding power than natural binder, but it has the further element of **plasticity**, so that it yields instead of crumbling.

*Tarvia solves motor-traffic problems.*

The use of Tarvia re-enforces the road-surface and makes it strong enough to resist motor-driven traffic, which to-day is the biggest problem of the roadmaker.

Likewise with the erosion problem: Water on steep grades washes out plain macadam but does not harm the Tarvia-macadam because it is absolutely water-proof.

And remember, Tarvia Roads are also *frost-proof, mudless and dustless*, and cost less than any other type of good-road construction.

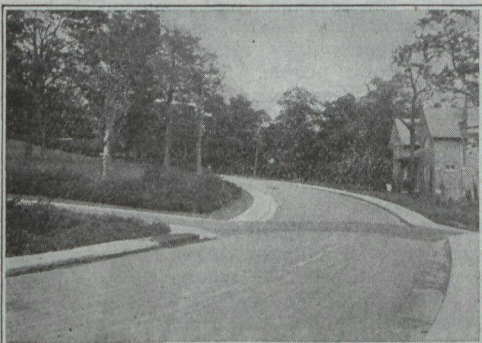
*Illustrated booklet describing the various Tarvia treatments free on request.*

The **Barrett** Company  
LIMITED

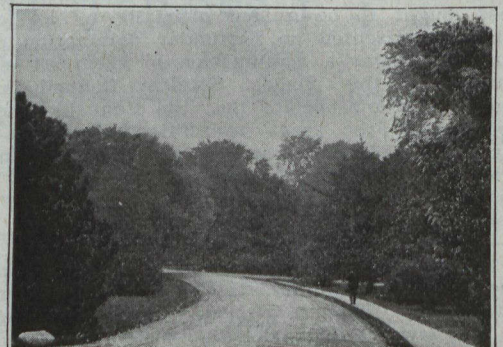
MONTREAL TORONTO WINNIPEG VANCOUVER  
ST. JOHN, N. B. HALIFAX, N. S. SYDNEY, N. S.

### Special Service Department

This company has a corps of trained engineers and chemists who have given years of study to modern road problems. The advice of these men may be had for the asking by any one interested. If you will write to the nearest office regarding road problems and conditions in your vicinity, the matter will have prompt attention.



*Summit Crescent, West Crescent, Height, Westmount, a suburb of Montreal. Treated with Tarvia.*



*Main Driveway, Queen Victoria Park, Niagara Falls, Ont., north of the Administration Building.*