

The Western School Journal

(AUTHORIZED BY POSTMASTER GENERAL, OTTAWA, AS SECOND CLASS MAIL)

VOL. XI

WINNIPEG, JANUARY, 1916

No. 1

Editorial

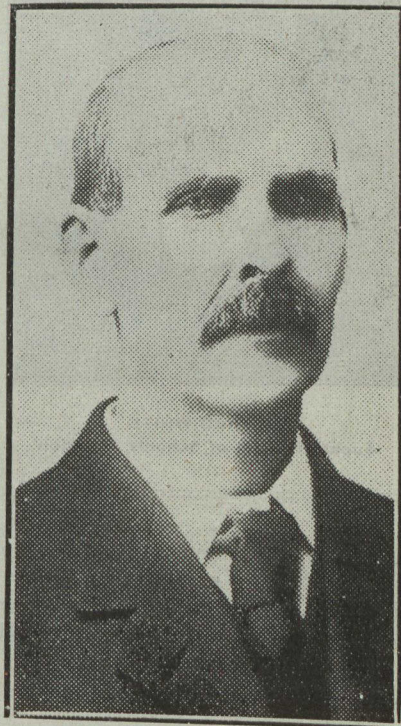
A Forward Move

Beginning with this issue the Western School Journal will be sent to every school district in the province. In it will be found the bulletin of the Department of Education. The advantages of this arrangement are apparent to all, and it is not the fault of the Department if teachers do not make much of the Journal and if they do not benefit from it. In order that it may reach its highest usefulness it must become in a real sense the organ of the profession. Towards this end every teacher must feel bound to write for it, to make suggestions, to offer criticisms. During the last month several very fine articles have come to the editor's desk, quite unsolicited. This is just the thing. Can it not be continued? There were also sent in two excellent suggestions, both of which will be acted upon. Teachers will have every opportunity in future to reach one another through the columns of the Journal. They should take advantage of it. The Department will rightly feel disappointed unless the Journal is the means of helping every teacher in a definite way. The teachers of Manitoba will surely be the first to live up to the motto: "Each for all, and all for each."

Ruralizing the Rural Schools

It is the intention of the Journal during the year to give serious attention to the problem of "Ruralizing the Rural Schools." It has been repeatedly stated that while there have been improvements in farm buildings, farm machinery, farming methods, and farming con-

ditions generally, there has been no corresponding improvement in rural schools. It is stated further that rural schools as they ordinarily exist are a complete misfit, that they do not pre-



DANIEL MCINTYRE

Superintendent of Schools, Winnipeg

pare for life in the country, that they educate away from the farm, that they are devoid of life. All this, and a thousand other things are said, and it is