

MONEY IN MAPLE.

A WRITER in the Canadian Bookseller says: "In Canada we have the best hard maple in the world. The farmer in many districts spends part of his winter cutting it and selling it for firewood. He is quite happy if he realizes \$1 to \$3, or perhaps \$4, a cord. This is a sad waste of one of our greatest natural treasures. Much of it can be more profitably used in other ways. In the manufacture of wall paper, an industry constantly growing here and abroad, hundreds of thousands of rollers are used for printing the various patterns. These rollers are made of the very

best hard maple, the very kind that Canada produces better than any other country in the world. In the rough they are 19½ to 23½ inches long. The end is 5 or 6 inches square, according to the size of roller required. Only the most perfect wood can be used. It is cut into these sizes. The ends are painted to prevent the wood drying faster with the grain than across it. It is then allowed to stand for three or four years. By this time it is thoroughly seasoned. This is all the labor put upon it. Good maple in this form, after being properly seasoned, brings 50 cents to 75 cents per rough block. A considerable quan-

tity of maple blocks are similarly treated each year for use in mangles. These must be of first class wood, but are not necessarily as perfect as the wall paper rollers."



Auction Sale OF Timber Berths

DEPARTMENT OF CROWN LANDS,
(Wood and Forests Branch.)
Toronto, June 2nd, 1897.

NOTICE is hereby given that under authority of Orders in Council Timber Berths as hereunder mentioned in the NIPissing, ALGOMA and RAINY RIVER DISTRICTS, viz., the Townships of Rathburn, Kelly, Davis, the north half of Scadding, and that part of Hamner south of the Vermillion River, all in the District of Nipissing, the Township of Coffin additional, and certain small areas on the Spanish and Biscaya waters, in the District of Algoma; and berths 16 and 17 sale of 1897, D 3, D 4, D 5, D 6, on Maritau Lake, and certain small scattered areas in the District of Rainy River, will be offered for Sale by Public Auction at the Department of Crown Lands, Toronto, at the hour of ONE o'clock p.m. on WEDNESDAY, THE EIGHTEENTH DAY OF AUGUST NEXT.

Sheets containing conditions and terms of Sale, with information as to Areas, Lots and Concessions comprised in each Berth, will be furnished on application, personally or by letter, to the Department of Crown Lands or to the Crown Timber offices at Ottawa and Rat Portage.

J. M. GIBSON,
Commissioner of Crown Lands.

N. B.—No unauthorized publication of this advertisement will be paid for.

J. D. SHIER

MANUFACTURER OF

Lumber, Lath & Shingles

BRACEBRIDGE, ONT.



Sole Canadian Agents :-: Prices Reduced.
WATERLOO, BRANTFORD, CANADA.

ARE YOU LOOKING FOR A CHANCE IN LOCATION?

If you are not satisfied with your present site, or if you are not doing quite as well as you would like to, why not consider the advantages of a location on the Illinois Central R. R. or the Yazoo & Mississippi Valley R. R.? These roads run through South Dakota, Minnesota, Iowa, Wisconsin, Illinois, Indiana, Kentucky, Tennessee, Mississippi and Louisiana, and possess

FINE SITES FOR NEW MILLS
BEST OF FREIGHT FACILITIES

CLOSE PROXIMITY TO

COAL FIELDS AND DISTRIBUTING CENTERS

AND

INTELLIGENT HELP OF ALL KINDS
MANY KINDS OF RAW MATERIAL

For full information write to the undersigned for a copy of the pamphlet entitled

100 Cities and Towns WANTING INDUSTRIES

This will give you the population, city and county debt, death rate, assessed valuation of property, tax rate, annual shipments raw materials, industries desired, etc.

To sound industries, which will bear investigation, substantial inducements will be given by many of the places on the lines of the Illinois Central R. R., which is the only road under one management running through from the North-Western States to the Gulf of Mexico. GEO. C. POWER, Industrial Commissioner I.C.R.R. Co., 506 Central Station, Chicago.

CANNED FRUITS 2 lb., 3 lb. and Gallon Tins.
CANNED VEGETABLES 2 and 3 lb. Tins.
CANNED MEATS 1/4, 1/2, 1, 2, 6 and 14 lb. Tins.

When in need of supplies TRY US. We are making a specialty of this class of business.

H. P. ECKARDT & CO.

Wholesale Grocers

TORONTO

Galt Machine Knife Works



MACHINE KNIVES

OF EVERY DESCRIPTION

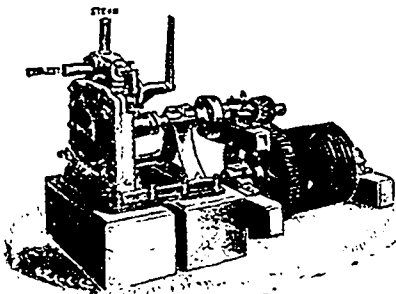
FOR Woodworking Machines

... Send for Price List ...

PETER HAY - - - - - Galt, Ont.

THE

DAKE STEAM FEED



Embodies the following Advantages:

SIMPLICITY OF CONSTRUCTION,
POSITIVE AND EASY MANAGEMENT,
ECONOMICAL USE OF STEAM,
SMALL SPACE OCCUPIED,
CHEAPNESS,
EASY ADAPTATION TO EITHER NEW MILLS OR THOSE NOW IN USE.

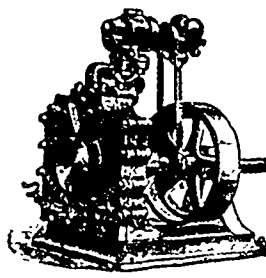
The movement of the engine in either direction is under the absolute control of the Sawyer, thus accommodating the speed of the feed to the size of the logs.

Mill men who have used other makes of Steam Feeds comment favorably on the economical use of steam of our feed over others.

Write for Catalogue and full particulars.

The Dake Engine

For Running Dynamos in



Small Isolated Plants.

STEADY AND EVEN MOTION

Also for Attachment Direct to Fans, Blowers, Com-fugal Pumps, Filing Room Machinery.

Correspondence Solicited.

The Phelps Machine Co. - Eastman, Que.

Please mention the CANADA LUMBERMAN when corresponding with advertisers.

OAK TANNED BELTING

TORONTO
20 FRONT ST. EAST
TELEPHONE 475

THE J.C. Mc LAREN BELTING CO. MONTREAL