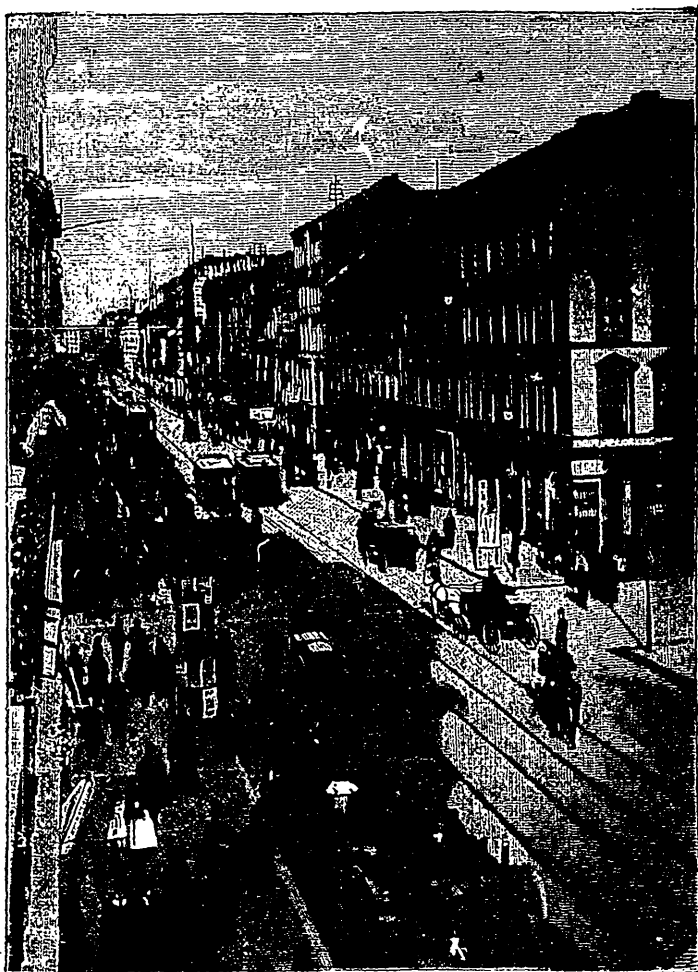


the German names on the signs. The bulletin kiosks on the sidewalk are a feature very common in Paris. The street railway is everywhere—in Rome, Naples, Alexandria and Cairo, and will, I suppose, be in Jerusalem soon.



STREET IN BERLIN.

Berlin is situated in the midst of a dreary plain of sand, and is a remarkable illustration of the recent growth of European cities. At the close of the Thirty Years' War its population was reduced to 6,000. It now numbers nearly two millions. Since it became