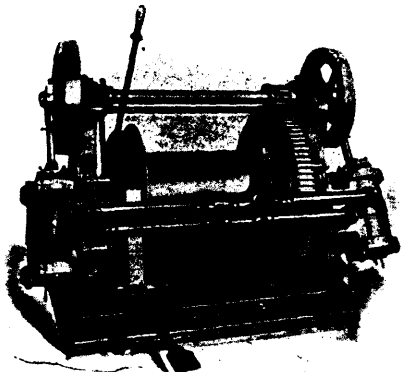
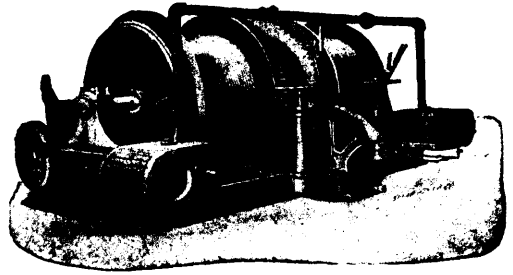


GENERAL MINING MACHINERY.



BACON'S Under-Ground Winze Hoist.

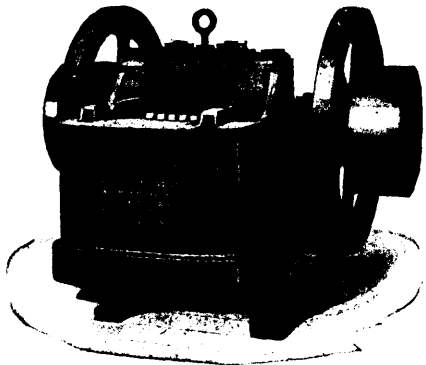
**HOISTING
CRUSHING
AND
Mining
Machinery.**



BACON'S Double Drum Winding Engines.

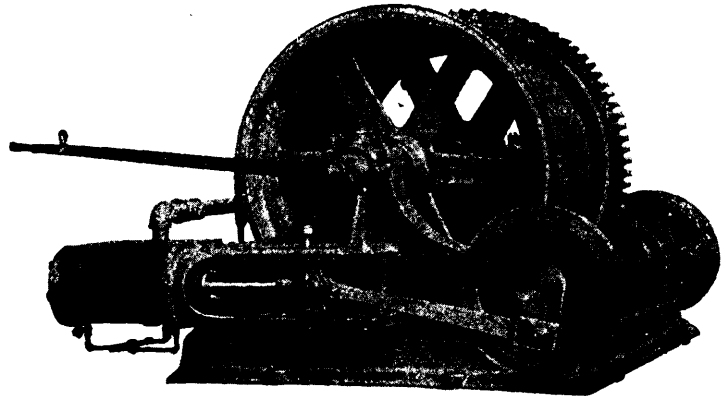
Earle C. Bacon, Engineer

Havemeyer Building- NEW YORK.



"Farrel" Ore and Rock Crusher. Standard of the World.

- Mine Cars.
- Engines.
- Boilers.
- Gravity Incline Machinery



BACON'S Double Cylinder Single Drum Winding Engines for Mine Shafts, Slopes, etc.

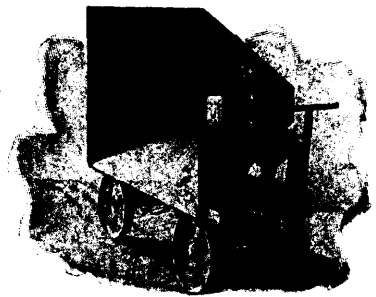
Send for Completely Illustrated Catalogues.



Conveyor 328 feet centers, handling 4 tons "run of mine" coal per minute.

Link-Belt

**ELEVATORS
AND
CONVEYORS.**



Steel Coal or Ash Cars.

ANY MATERIAL.
ANY CAPACITY.

Electric Coal Mining and Haulage Machinery,
Link-Belting, Sprocket Wheels, Malleable Iron Buckets,
Shafting, Pulleys, Gearing, Clutches,
Patent Machine-Moulded Rope Sheaves, etc.

THE LINK-BELT MACHINERY CO., Engineers, Founders, Machinists, Chicago, U.S.A.

WM. R. PERRIN & CO., CHICAGO, ILL., U.S.A.

MANUFACTURERS

Filter Presses

For Cyanide
and
Chloromatic Plants.

WRITE FOR CATALOGUE.

