

Weekly Market Report

TORONTO.

Man. wheat—No. 1 North, \$1.08½.
Man. oats—No. 3 CW, 41½c; No. 4, 40½c.
Man. barley—Nominal.
All the above, c.i.f., bay ports.
Ontario barley—65 to 70c.
American corn—No. 2 yellow 98½c.
Buckwheat—No. 2, 76 to 80c.
Ontario rye—74 to 78c.
Peas—No. 2, \$1.45 to \$1.50.
Millfeed—Del., Montreal freights, bags included; Bran, per ton, \$28; shorts, per ton, \$30; middlings, \$36; good feed flour, \$2.10.
Ontario wheat—No. 2 white, 98 to \$1.02, outside.
Ontario No. 2 white oats—39 to 41c.
Ontario corn—Nominal.
Ontario flour—Ninety per cent. pat., in jute bags, Montreal, prompt shipment, \$4.60; Toronto basis, \$4.60; bulk, seaboard, \$4.25.
Manitoba flour—1st pats., in jute sacks, \$6.20 per lb.; 2nd pats., \$5.70.
Hay—Extra No. 2 timothy, per ton, track, Toronto, \$14.50 to \$15; No. 2, \$14.50; No. 3, \$12.50 to \$13; mixed, \$12.50.
Straw—Carlots, per ton, \$9.50.
Standard reconditioned screenings, f.o. bay ports, per ton, \$20.50.
Cheese—New, large, 18 to 19c; twins, 19 to 20c; triplets, 20 to 21c; Stiltons, 21 to 22c. Old, large, 25 to 27c; twins, 26 to 28c; triplets, 30c.
Butter—Finest creamery prints, 41 to 42c; No. 1 creamery, 40 to 41c; No. 2, 37 to 38c; dairy, 34c.
Eggs—Extras, fresh, in cartons, 33 to 34c; extra, loose, 31c; firsts, 28 to 29c; seconds, 24 to 25c.
Live poultry—Chickens, 3 to 4 lbs., 25c; hens, over 5 lbs., 26c; do, 4 to 5 lbs., 24c; do, 3 to 4 lbs., 15c; spring chickens, 4 lbs. and over, 25c; roosters, 15c; ducklings, over 5 lbs., 19c; do, 4 to 5 lbs., 18c.
Dressed poultry—Chickens, 3 to 4 lbs., 85c; hens, over 5 lbs., 28c; do, 4 to 5 lbs., 24c; do, 3 to 4 lbs., 18c; spring chickens, 4 lbs. and over, 32c; roosters, over 5 lbs., 18c; over ducks, over 5 lbs., 24c; do, 4 to 5 lbs., 25c.
Beans—Can., hand-picked, lb., 6½c; primes, 6c.
Maple products—Syrup, per imp. gal., \$2.50; per 5-gal. tin, \$2.40 per gal.; maple sugar, lb., 25c.
Honey—60-lb. tins, 11 to 11½c per lb.; 10-lb. tins, 11 to 12c; 5-lb. tins, 11½ to 12c; 2½-lb. tins, 12½ to 13c.

comb honey, per doz., No. 1, \$3.75 to \$4; No. 2, \$3.25 to \$3.50.
Smoked meats—Hams, med., 23 to 24c; cooked hams, 34 to 36c; smoked rolls, 17 to 18c; cottage rolls, 19 to 21c; breakfast bacon, 23 to 26c; special breakfast bacon, 28 to 30c; backs, boneless, 28 to 33c.
Cured meats—Long clear bacon, 50 to 70 lbs., \$18.50; 70 to 90 lbs., \$18; 90 lbs. and up, \$17; lightweight rolls, in barrels, \$37; heavyweight rolls, \$32.
Lard—Pure tierces, 14½ to 15½c; tubs, 15 to 15½c; pails, 15½ to 16c; prints, 18 to 18½c; shortening tierces, 13½ to 14c; tubs, 13½ to 14c; pails, 14½ to 15c; prints, 16½ to 17c.
Heavy steers, choice, \$7.50 to \$8; butcher steers, choice, \$7 to \$7.50; do, good, \$6 to \$6.50; do, med., \$5 to \$5.75; do, com., \$4.50 to \$4.75; butcher heifers, choice, \$6.75 to \$7.50; do, med., \$5 to \$5.75; do, com., \$4.50 to \$4.75; butcher cows, choice, \$4.75 to \$5.50; do, med., \$3.50 to \$4.50; canners and cutters, \$1.50 to \$2; do, com., \$2.50 to \$3.50; feeding steers, choice, \$5.50 to \$6; do, fair, \$4 to \$5; stockers, choice, \$4 to \$5; do, fair, \$3.50 to \$4; milkers and springers, choice \$7 to \$10; calves, choice, \$10 to \$11.50; do, med., \$7 to \$9; do, com., \$5.50 to \$6; lambs, choice ewes, \$14 to \$15.50; do, bucks, \$12.50 to \$13.50; do, culls, \$8 to \$9; sheep, light ewes, \$8 to \$9; do, culls, \$5 to \$5.50; hogs, fed and watered, \$7.75; do, f.o.b., \$7.25; do, country points, \$7.25; do, off car, \$7.95 to \$8.15; do, select, \$8.50.

MONTREAL.

Oats, CW, No. 2, 51c; do, No. 3, 49c; do, extra No. 1 feed, 47½ to 48c; do, No. 2 local white, 44 to 44½c; flour, Man. spring wheat pats., 1st, \$6.20; do, 2nds, \$5.70; do, strong bakers, \$5.50; do, winter pats., choice, \$5.50 to \$5.65; rolled oats, bag 90 lbs., \$2.90; bran, \$28.25; shorts, \$30.25; middlings, \$36.25; hay No. 2, per ton, car lots, \$16.
Butter, No. 1 pasteurized, 35½ to 36c; do, No. 1 creamery, 34½ to 35c; do, seconds, 33½ to 34c; eggs, fresh extras, 32c; do, fresh firsts, 28c; fresh potatoes, per bag, car lots, \$1.55 to \$1.60.
Com cows, \$3.25 to \$3.60; canners, \$1.50; med. quality calves, \$3; do, com., \$4.75; good veals, 150 to 180 lbs., \$8.50; hogs, \$8.25 to \$8.35; select, \$9; sows, \$6.

CANADA'S FOREIGN TRADE SHOWS GAIN

Twelve Months' Record Denotes \$115,000,000 Increase in Exports.

A despatch from Ottawa says:—Canada's foreign trade continues to show a remarkable expansion. In the 12 months ended February, this year, the exports from the Dominion totalled \$1,029,268,881, an increase of more than \$115,000,000 over the preceding 12 months, and the imports into Canada for the 12 months ended February, this year, totalled \$898,888,916, an increase of more than \$108,000,000 over the preceding 12 months.

The largest commodity increase was the export of wood and paper, which totalled \$270,846,506 in the 12 months ended February this year, an increase of about \$48,000,000 over the preceding 12 months. Another feature is that in those 12 months the United States was by far a greater customer of Canada than was the United Kingdom, the imports into Canada from the United States being \$603,729,056, and from the United Kingdom \$158,179,402, while the exports to the United States were \$426,148,638, and the exports to the United Kingdom \$355,838,516.

The British Empire's sales to Canada in the 12 months ended February this year aggregated \$197,994,994, an increase of more than \$20,000,000 over the preceding 12 months, and the Empire's purchases from Canada in the former period were \$431,917,952, a decrease of over \$7,000,000.

Exports to Australia in the year ended February last were \$20,401,275, an increase of over \$3,000,000. Exports to Belgium increased from \$12,551,705 to \$16,182,035, and exports to Germany totalled \$15,682,625, an increase of nearly 100 per cent. Exports to Italy increased from \$11,898,806 to \$18,170,924, and exports to Japan increased from \$15,875,157 to \$26,901,473, or nearly 100 per cent. Exports to Norway nearly doubled, the total for the year ended February last being \$4,922,192, and exports to Switzerland nearly doubled.

Butter imports decreased 4,812,085 lbs. to 2,699,824 lbs., and butter exports dropped from 21,812,295 lbs. in the 12 months ended February, 1923, to 12,960,715 in the 12 months ended February last. Cheese imports totalled in value \$569,047, an increase of 100 per cent. and cheese exports totalled \$23,371,038, an increase of about \$2,000,000. Hard coal imports increased from \$27,003,354 to \$44, \$14,115, and soft coal imports totalled \$45,277,286, an increase of over \$2,500,000, while coal exports dropped from \$12,247,302 to \$9,190,336. Raw cotton imports increased by about \$3,000,000. Metal imports totalled \$216,085,239, an increase of nearly \$50,000,000, and metal exports increased from \$89,451,573 to \$128,167,765, or



Sir William Duff Reid
Builder of the Newfoundland Railway,
who died at his home in Montreal on
March 12, in his fifty-sixth year.

nearly \$40,000,000. Wool imports totalled \$357,556,550, an increase of over \$7,000,000. Automobile exports aggregated \$36,571,450, an increase of about \$8,000,000, and automobile imports were \$30,266,920, an increase of over \$1,000,000.

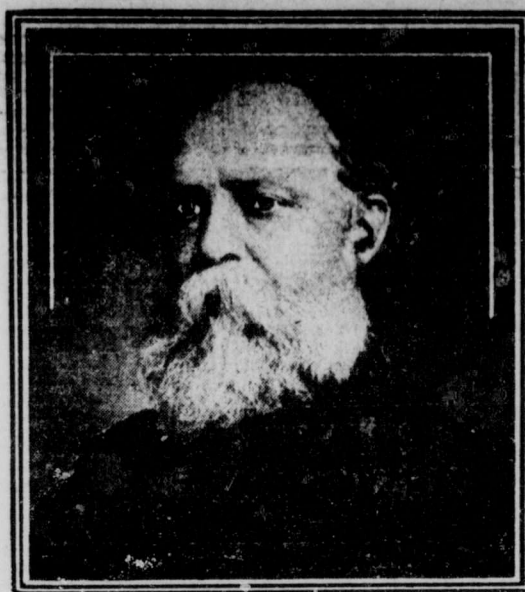
Landslides Continue in Stricken Amalfi District

Rome, March 30.—Fifty huge land slips and many more still threatened by the trembling earth, are adding new and prospective horrors to the Amalfi disaster, which began with a waterspout from rain-laden skies and continued with an earthquake shock. Heavy seas make the landing of food, clothing and tents for the thousands of homeless, impossible. Mountain roads and paths have been wiped out by the hundreds and great chasms cleft in the rocks by the earthquake. Downpours of tropical rain have set torrents of mud into molten-like liquid glaciers. In the middle of this desolate situation, the refugees and victims of Italy's latest disaster are shivering and homeless.

Labor Has 25 Seats in Australian House

A despatch from Perth says:—The results of the elections in the electorates of West Australia give the following state of parties: Labor 25, Ministerialists 10, Ministerial Country Party 7, Anti-Ministerial Country Party 3. A member of the Cabinet expressed the opinion that if the Government wins the two deferred elections it will ask the Governor for dissolution, and if it loses one or both it will resign.

Many have got into the habit of being dissatisfied.—Lincoln.



SIR EDMUND WALKER, C.V.O., L.L.D., D.C.L.

President of the Canadian Bank of Commerce, Chancellor of the University of Toronto, and outstanding patron of art and music, who passed away on March 27, at his home, "Long Garth," 99 St. George Street, Toronto, from an attack of pneumonia.

LONDON TROLLEY STRIKE SETTLED

Menace of Coal Crisis, However, Looms Blacker in Industrial Sky.

A despatch from London says:—Three hours before the subway workers were to start a sympathetic strike in support of the trolley men and bus drivers, the tramway strike was virtually settled at nine o'clock Friday night.

The men demanded an eight shilling a week raise. At first they were denied any increase, and now after a week of the strike, they get six shillings immediately and two shillings more later, subject to fluctuations in the cost of living.

But if London breathes more freely, the menace of a coal strike looms blacker on the industrial sky. The miners' conference on Friday rejected the mine owners' latest offer, which included an increase in the general minimum rate of wages to 32½ per cent. above the pre-war rate. The offer included also a Government inquiry into wages at present as compared with pre-war pay. An index figure of the cost of living and the wages paid other industries were to be taken into consideration.

The miners' decision will be submitted to the vote of all the miners in Great Britain, April 8, and later a ballot will be taken before any strike is started.

Hopes of averting the strike now seem to centre in the possibility of the Government getting the miners' minimum wage bill through Parliament. The Parliamentary Labor party has decided to ask the Cabinet to do this before the strike vote is taken.

Main Roads from Twin Cities Open for Automobiles

Port Arthur, March 30.—The main trunk roads between Port Arthur and the country are open. Autos are now running to Murillo and Kakabeka Falls.

Forty-nine different countries imported Canadian flour last year, according to the president of the Dominion Millers' Association.

WEST'S MEMBERSHIP QUITE INADEQUATE

Redistribution Bill Will Give Western Canada Twelve More Representatives.

Winnipeg, March 30.—"The present representation of the West has at Ottawa is totally inadequate, and until we have a real voice in the settlement of our own affairs Canada as a whole will not go ahead efficiently," declared Dr. R. G. Brett, Lieutenant-Governor of Alberta, here Saturday, en route to Edmonton from the East.

The most important problem at the moment, he said, was the absolute necessity of the West urging adequate representation at Ottawa. Although no one could desire separation for one moment—such a thing would be the ruin of the country—nevertheless the East had to sit right up and realize that the West had to be given a proper voice in the management of its affairs.

Ottawa, March 30.—A Redistribution Bill to be brought down this session by the Government will give Western Canada twelve more members and reduce Nova Scotia's total membership by two, under the terms of the British North America Act, which fixes Canada's Parliamentary representation on the basis of one-sixty-fifth of Quebec's population. British Columbia is increased from 13 to 14 members; Manitoba from 15 to 17; Alberta from 12 to 16, and Saskatchewan from 16 to 21. The number of members of Parliament will be increased, if the bill goes through, from 235 to 245.

Severe Earth Tremor Recorded at Victoria

Victoria, B.C., March 30.—A severe earthquake disturbance 440 miles south of Victoria, beginning at 4.10 o'clock and continuing for two hours, was recorded by the seismograph of the Dominion Meteorological Bureau here on Saturday.

Not So Passionate.
Cultor (passionately)—"My love is like the deep, deep sea."
The Loved One—"And I take it with the corresponding amount of salt."



A historical episode occurred at the House of Commons, Eng., when Arthur Henderson was introduced to the speaker as a member of parliament by his two sons, both members of parliament. Father and sons are shown arriving at the House.

UNITED STATES SWEEP BY SEVERE STORM

Twenty-five Lives Lost, Roads Blocked by Swirling Blizzard.

Chicago, March 30.—Old Winter, who has greatly overstayed his welcome, slew twenty-five persons and did enormous property damage in his farewell fling, which began Friday night and continues to-night, although in considerably lessened degree of ferocity.

Minnesota and adjacent Northwest States appear to have been the hardest hit, although the chief loss of life was in Oklahoma and Missouri in the Twin Cities the blizzard is the worst in their history. More than a thousand automobiles are buried in the snowdrifts in the streets, and the roofs of abandoned street cars and other vehicles appear at frequent intervals above the drifts.

The one bright note comes from the farmers of the Northwest, who say the immense snowfall will be worth \$50,000,000 to the crops, as it will prevent any danger of drought.

Thousands of telegraph and telephone poles have been broken and wire service is badly crippled.

Nebraska and adjacent States are heavily plastered with snow, which has been falling steadily for more than forty-eight hours. A stiff wind has piled it into high drifts, blocking railways and country roads, and transportation of all kinds is paralyzed.

In Pennsylvania, West Virginia, Maryland and other Eastern States serious damage from floods is reported. Trains are being rerouted because of destroyed bridges and all are hours late.

Pittsburg, March 30.—A score of city blocks in the lower sections were inundated, and sections for several miles up stream laid waste when both the Allegheny and Monongahela Rivers, meeting here to form the Ohio, left their banks to-day in Pittsburg's greatest flood in ten years. No loss of life was reported.

Much damage was caused to steel mills located along the river banks. Tracks of both the Baltimore & Ohio and Pittsburg & Lake Erie Railroads were flooded in sections. Many families were forced to leave their homes.

Cumberland, Md., March 30.—Six persons, composing an entire family, were reported to-day as having lost their lives at McCool, Md., 20 miles west of here, when their home was swept from its foundation and carried down the Potomac River. The family consisted of Mr. and Mrs. John Devilliss and their four children. All wires into the town were broken by the flood, and the report could not be verified.

GERMANY WILL AGREE TO PAY \$500,000,000

Annual Reparations to Start After Four Years' Moratorium.

Paris, March 30.—The Reparation Committee has reason to believe that the Present German Government will agree to pay two and a half billion gold marks annual reparations.

This important figure, which is more than \$500,000,000, is the total annual reparations figure and is to begin with the fourth year after a moratorium. It is the central figure towards which the experts have striven in making their report to the Reparations Commission of Germany's ability to pay. This is the figure which is expected to be the centre of the German inner struggle as to whether it is better to accept or refuse.

All other questions, such as the establishment of a gold bank, debentures on railroads and industry, are considered interior German affairs if Germany accepts and is able to carry out the payments as the experts recommend.

Despite reverse reports coming from Berlin, indicating that Germany will not accept, the experts maintain that they have reason to believe Germany will accept and carry out the plan. The experts, especially the Americans, are disturbed by reports that the final accord was reached by compromise. They are further perturbed over comments that they have been trying to arrive at political instead of technical results. They maintain the report when published will show that political consideration has not influenced them, but that they concentrated on Germany's ability to pay, and in finally arriving at a central figure of two and a half billions they did so on careful study of the figures.

Three and a half million dollars, or nearly 20 per cent. of the whole revenue of the province, is the estimated direct gain from the timber resources of British Columbia during the coming fiscal year. Timber licenses are expected to produce \$1,250,000, royalties \$1,600,000, timber scales \$350,000, and timber leases \$100,000.