

with a sterile camel's-hair brush dipped into the broth culture, filling up the wound.

(b) Incisions made into bark of the main limbs of the same trees



Fig. 49. Blight cankered limb of Bartlett pear tree used in Experiment 2. The lower limit of the canker is shown by the irregular crack in the bark. The tissue used for culture experiments was taken from two inches within (a) and two inches without (b) the cankered area.

used in experiment (a). These wounds soaked with the broth culture by means of the camel's-hair brush.

(c) Two twigs on each of six young apple trees treated in the same way as the pear twigs in experiment (a).

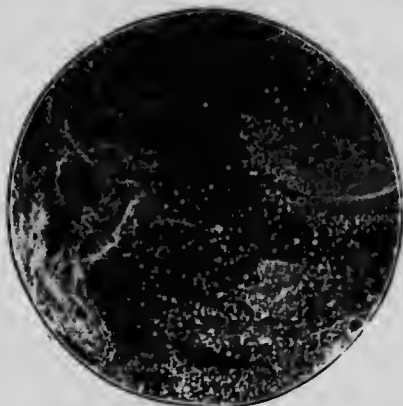


Fig. 50. Agar plate culture of *B. amylovorus*, obtained from the maceration of inner bark tissue taken from (b) outside the canker shown in Fig. 49. Every white dot is a colony of bacteria. The culture was pure. Incubated at 25° C. (Natural size.)

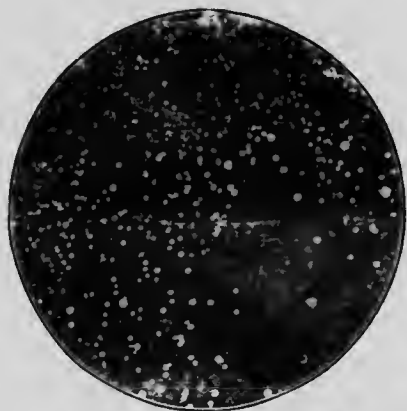


Fig. 51. Agar plate culture of *B. amylovorus* from a dilution of the mulch used for plate shown in Fig. 50. Incubated six days at 25° C. (Natural size.)