

A tale of three sisters



Neptune's first play in 2000 a solid show

BY KATHY REID

Set in Yorkshire, England, in 1996, Neptune's *The Memory of Water*, is a tale of three sisters with very different personalities grieving the loss of their mother.

The play begins on the eve of their mother's funeral at her old house by the ocean. The sisters arrive and the never ending bickering begins. At first it seemed like the entire play would be about the different ways in which the sisters go through the grieving process, but soon the theme began to branch out into many different sub-plots and conflicts such as sibling rivalry, and

love relationships. As these problems arise many memories are unearthed from the past and brought into the present.

The eldest sister, Teresa, is a hippy-esque woman who owns a health food store. Her husband Frank is a very simple man who decides to come clean and be brutally honest with Teresa, when he informs her with much reluctance that he really hates Woody Allen movies (which he had previously pretended to love) and that he doesn't want to be co-owner of the health food store because he thinks that the idea of organic therapy is crappy.

Teresa spends most of the

play fighting with her sisters, yelling, criticizing and bossing around Frank. I found all of this quite amusing — I particularly enjoyed when Teresa got incredibly intoxicated and decided to tell anyone who was near just where to go.

Mary, the middle sister, is a very self-absorbed doctor with a love for the finer things in life such as champagne and trips to Paris. She is having an affair with Mike, a very famous doctor who has a wife and three kids. Pregnancy troubles are in a spur in their relationship when Mary announces that she is pregnant. Mike doesn't want to have any more children — in fact, he never wanted them in the first place.

The youngest sister, Catherine is my personal favorite. She is a very eccentric, emotional, boy-crazy nut. Whenever she speaks it is very loud and continuous and, like her sister, she is also very egocentric. She's always talking about her life and problems. However she adds excitement to the play by running around like a chicken with her head cut off.

Catherine's style of clothing is pretty crazy, for example: a short black leather skirt, pink stockings and a leopard print jacket to her mother's funeral. She also expresses an obsession with men when she claims to hate them — We learn she actually likes men, and had sex with

about 78 different ones.

Overall, I think the play was solid, it was generally amusing and very emotional in some parts. It brings a feeling of nostalgia to mind, making you want to go back to the purity of your childhood, usually lost here at university.

The acting was excellent and the English accents sounded pretty genuine, although I did detect a slight Cape Breton accent in Teresa's slang. While the characters got annoying after a while, it really added to the show as the whole play consisted of the characters arguing and screaming at each other. A strikingly realistic portrayal of human emotions.

THEATRE REVIEW

As part of its routine planning process, the Faculty of Arts and Social Sciences conducts periodic reviews of all academic departments. In 1999-2000, a Review Committee is examining the department of Theatre. Students (current or former) who would like to comment on the Theatre Department - its curriculum or future development, their experience as students in the department, or any other aspect of the department's activities - are cordially invited to write to the Review Committee by March 24th, 2000, at the address listed below. All communications will be treated as strictly confidential. (If an interview is preferred, please contact the Chairperson of the Review Committee by February 13th, 2000.)

Dr. Hans-Gunter Schwarz (494-2161)
Chair (Theatre Review Committee)
Department of German
Dalhousie University
Halifax, Nova Scotia
B3H 3J5



→ Buy this

Student Class Airfare™
Your ticket to great rates & flexibility.

Bon Voyage Travel Insurance™
Comprehensive & inexpensive.

Rail Pass
Eurail or Britrail, we'll help you choose the right one & issue it on the spot.

ISIC (a.k.a. International Student Identity Card)
For even more discounts when you're on the road.

Going to
Europe?
Make your first stop

TRAVEL CUTS VOYAGES CAMPUS

→ Get this stuff FREE!

Let's Go Europe 2000

Travel Journal

Poncho

Water Bottle

Laundry Bag

Luggage Tag

A night at the Pink Palace



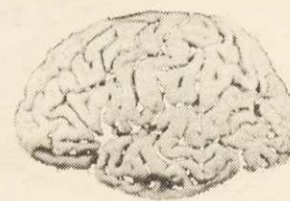
3rd Floor, SUB

494-2054

*All four items must be purchased by March 31/00. Certain restrictions may apply. See Travel CUTS Voyages Campus for complete details. Insurance purchase not necessary in British Columbia.

travelcuts.com

Owned and operated by the Canadian Federation of Students.



BRAINS NEEDED

If you can contribute, come to a meeting.

THE GAZETTE

Suite 312, SUB
494 2507

Meetings at 4:30
every Monday
starting January 10th