

Fashions and Patterns

The Western Home Monthly will send any pattern mentioned below on receipt of 10c. Order by number stating size wanted. Address Pattern Department, The Western Home Monthly, Winnipeg, Man.

AMONG the many lovely materials for spring dresses are pretty crepes in all sorts of novelty and new ratines.

Another novelty is Jacquard cotton, a material that resembles a dyed table cloth. This is best for suits and tailored waists.

Lovely chiffon taffetas in plain colors and fancy figured designs are well adapted for prevailing drapery.

The new wool fabrics are very soft and pliable.

Short dressy coats are seen, they are just too long to be boleros. On some the fronts are cut low and square, fastened with a single button, others show a decidedly cutaway with tiny vest.

Panniers, tunics, flounces and ruffles are shown on the new skirt models.

The tunic is seen in single, double and triple tiers, also in side tunics, box

plaited style and the popular Minaret. The tunic may be in various lengths, it may be shorter in front, longer in back and vice versa. It may start from the front panel or from the back. It may be a real tunic, or simulated by trimmings in tunic effect.

The peg top skirt will continue its popularity, and this also permits of various forms of treatment. A new feature in this style is the caught-up-in-front effect, which simulates a tunic. Some new skirt styles show the drapery in the back or at the sides, with plain front. Bustle back skirts are ultra fashionable.

A charming little party dress is made of soft white silk chiffon daintily draped over white shadow lace on blouse, and with a lace chemisette and undersleeves. A touch of color is seen in the draped girdle, of pale pink messaline. The waist of this model is made in Japanese

style. The skirt has a tunic with points at the sides.

A new three tier skirt will look very stylish in serge or plaid cheviot. This makes an ideal skirt for general utility wear.

A pretty dress of washable ratine in a new shade of tan, has a waist made with the "dip shoulders." It is cut low over a yoke of brocaded silk, the "V" neck opening has a frill of net. The skirt has a deep tuck at the side, where it joins a draped portion that is caught up at the back to give just a semblance of "bustle" fullness.

A dainty blouse is made of fine white all over embroidered voile. It has a vest of white Brussels net fastened with white crochet buttons. The neck is cut in "V" shape and finished with a double frill of white net and a variety band of velvet ribbon. The sleeves in "cap" style are finished at the wrist with frills.

Another charming blouse is fashioned from Canton crepe, and has a ruffle of self material extending around the neck and down each side of the front, falling in graceful folds. The sleeves are finished at the wrist in the same way.

A stylish dress was developed in mahogany brown silk foulard. The waist

is made with a vest of Brussels net and white Venise embroidery, ornamented with fancy pearl buttons. A turn down collar of the embroidery is edged with a net ruffle. The sleeve is cut in one with the front yoke at the back, and lengthened by a close fitting lower portion, edged with a net frill. The skirt has a tunic, with two crosswise tucks in front; at the back the tunic ends are crossed and plaited into the belt.

A dainty frock of imported white crepe with pretty Dresden flowers shows the waist with a vest of gathered Brussels net, trimmed with colored messaline buttons and loops. The waist is fashioned with kimono shoulder, and has lace undersleeves. The skirt has a double gathered tunic, slashed at the side. A crushed girle of messaline is crossed over the front of the waist, and fastened with ornamental buttons just below the bust.

Dresses for growing girls are shown in Middy, Balkan and Russian styles. Irish linen, linene, gingham, galatea, washable ratine, repp and eponge are suitable materials. A smart model in Russian peasant style is made of light blue repp embroidered in white. The dress has a plait at each side of the front and back, stitched down to the waistline. The free edges are scalloped on neck, sleeves and belt. The front of sleeve and dress is buttoned to the back over the shoulders.

A neat school dress made up in blue and brown plaid gingham shows the fronts made with a broad plait outlining a vest of plaid cut on the bias, thus forming an apparent contrast. Button trimmed tabs hold the tie ends in place that extend beneath the front edge of a broad collar in white linene. The cuffs are in white also. The skirt shows deep panel like plaits in front and back, and is joined to the waist with a broad belt.

They beat all the old ideas —for food-quickness

**A
Cube
to a
Cup**



What is more warmth-giving and invigorating on a cold day than a steaming delicious cup of Oxo! What can be quicker than dropping an Oxo Cube in a cupful of hot water! With a biscuit it makes a light satisfying meal—ready in a minute—and just that rich strengthening beef-nourishment the body needs.

And the delightfulness of it! ready at any moment without trouble. Before a morning's shopping—after the theatre—on a journey—at bedtime—no matter when, the handy little Cubes in their dainty tin are at your service.

A daily cup of Oxo is an excellent safeguard against the "grip"

Tins of 4, 10, 50 & 100 Cubes.

**OXO
CUBES**

**Beauty and Charm
with Economy**

The first impression on entering a room decorated with "Alabastine" tints is one of Beauty. But—while the effects are charming in the highest degree, yet "Alabastine" is the most economical wall finish.

You can make every room in your home glow cheerily by using "Alabastine"—

"Alabastine" tints impart that soothing, restful effect so much desired by people of good taste.

Anyone can apply "Alabastine"—

Mix with cold water and apply with flat bristle brush. With the numerous tints and white, any color scheme can be easily produced.

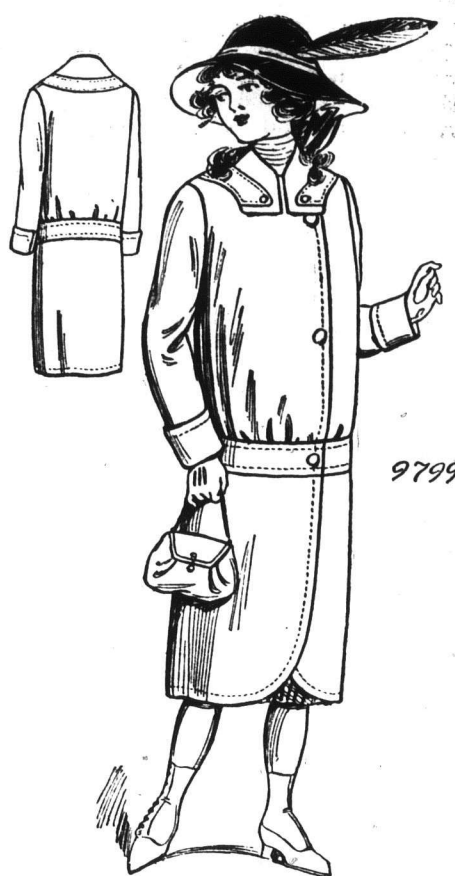
"Alabastine" is just the famed Alabaster rock ground into a fine cement—hence its bewitching and permanent colors.

It won't rub off. You can re-decorate at any time—one coat makes an excellent foundation for another.

Free Stencils: Our staff of trained decorators will draw up any color scheme for you free of charge. We also supply free stencils suitable for your purpose. "Alabastine" is sold by all Hardware and Paint Dealers. Write for full particulars and free booklet.

The Alabastine Co., Limited 21
45 Willow St, Paris, Canada.

**CHURCH'S
COLD WATER Alabastine**



9799. A Good Coat Style. Girl's Coat.

Cheviot, zibelene, velvet, corduroy, serge, or broad cloth are all suitable for this model. The fronts are double breasted, and the collar is trimmed with a shaped band. The coat is finished in Balkan style. The pattern is cut in five sizes: 8, 10, 12, 14 and 16 years. It requires 3½ yards of 44-inch material for a 10 year size. A pattern of this illustration mailed to any address on receipt of 10c. in silver or stamps.

Tunic effects are ever popular at present, especially for slender figures. The design here portrayed shows a pretty style. It was developed in plum color velvet, embroidered in self color. A vest of white suede trimmed with soutache braid is top, by a chemisette of satin, to match the velvet. A girdle of the same material finishes the waist. A narrow trimming of skunk serves as additional trimming on tunic and waist. This attractive dress is com-