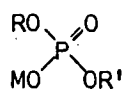


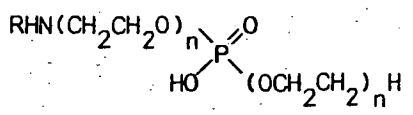
R: $(-R''O)_n H$
 R': alkyl ester of hydroxy-
 aliphatic acid
 M: K, Na, 1/2Ca

Phosphate salts (K, Na, Ca) of hydroxyaliphatic acid
 (C_{8-24}) alkyl ester and polyoxyalkylene



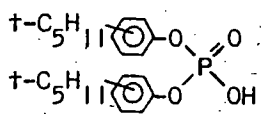
R: $(CH_2CH_2O)_n -R''$
 R': alkyl ester of hydroxy-
 aliphatic acid
 M: H, Na, K

Phosphate and its salts (Na, K) of hydroxyaliphatic
 acid (C_{8-24}) alkyl ester and alkyl (or alkenyl, C_{6-24})
 polyoxyethylene

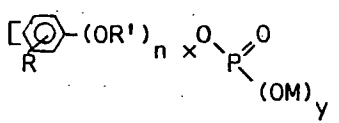


R: alkyl or alkenyl

N-Alkyl (or alkenyl) (C_{8-24}) aminopolyoxyethylene poly-
 oxyethylene phosphate

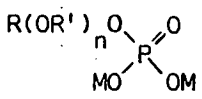


Di (t-amyphenyl) phosphate



M: H, K, Na, 1/2Ca, 1/2Ba

Mono- or di-alkyl $(C_{4-14, 18})$ phenylpolyoxyalkylene
 phosphate and its salts (K, Na, Ca, Ba)



M: H, K, Na, 1/2Ca

Aryl [diphenyl, naphthyl, cumylphenyl or mono- (or bis-,
 tris-, tetrakis-, pentakis-) benzylphenyl, styrylphenyl-
 styryldiphenyl] polyoxyalkylene phosphate and its salts (K, Na, Ca)