

Miners Wanted

TO CHEW

PAY ROLL

Plug Tobacco

WANTED.

At the several collieries of the Dominion coal co. Limited, skilled coal miners and mine laborers.

Apply on the works Or by letter

Dominion Coal Company, Ltd
THE GARLOCK PACKING CO.



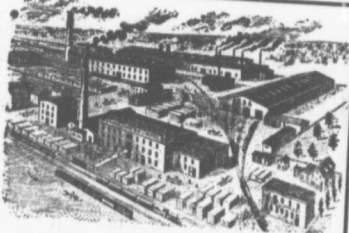
GARLOCK'S STEAM, WATER and AMMONIA
 —PACKINGS.—
 ASBESTOS SECTIONAL COVERINGS.

Hamilton, Ontario.

Used by Collieries in Lancashire, Staffordshire & Yorkshire

'XTERRA' COLLIERY LAMP OIL.
 For Marsaut, Mosses Deflector or Closed Lamp

PURE WHITE FLAME
E. WOLASTON, Dutton St MANCHESTER
 Sole Representatives for Canada, AUSTEN BROS.,
 Halifax, N. S.



—MANUFACTURERS OF—
RAILWAY STREET and MINING CARS,

CAR WHEELS Church Pews,
 FORGINGS & Fittings for Stores, Schools, &
 CASTINGS A SPECIALTY.

Large Stocks of Foreign and Domestic Lumber on Sale.

Rhodes, BUILDING MATERIALS
Curry & co., Ltd. GENERAL
 Branch ROBBIE STREET, HALIFAX, N. S. AMHERST, N. S.

INTERCOLONIAL RAILWAY

On and after Thursday January 15 1907 trains run daily, Sunday excepted, as follows:—

—TRAINS LEAVE STELLARTON—

No 164 Mixed for Hopewell	8.55
78 Mixed for Trenton	8.30
18 Express for Hopewell	8.55
18 Express for Halifax and St. John	7.40
21 Mixed for Pictou Landing	7.40
62 Mixed for Pictou	7.45
18 Mixed for Mulgrave	8.30
19 Express for Sydney	11.10
28 Mixed for Pictou	11.10
26 Mixed for Truro	11.15
30 Express for Halifax and Montreal	12.15
140 Mixed for Pictou	12.45
140 Mixed for Pictou Landing	12.50
101 Mixed for Hopewell	12.50
22 Mixed for New Glasgow	12.50
17 Express for New Glasgow	12.50
66 Express for Pictou	12.50

—TRAINS ARRIVE AT STELLARTON

79 Mixed from Hopewell	8.30
78 Mixed from Trenton	8.55
18 Express from Pictou	7.30
18 Express from New Glasgow	7.35
21 Mixed from Hopewell	7.35
62 Mixed from Truro	7.35
28 Mixed from New Glasgow	8.00
17 Mixed from Pictou	10.55
62 Mixed from Mulgrave	10.55
19 Express from Halifax and St. John	12.35
100 Mixed from Pictou	11.00
22 Mixed from Sydney	12.35
22 Mixed from Pictou Landing	12.45
17 Mixed from Hopewell	12.45
62 Express from Pictou	12.45
62 Express from New Glasgow	12.45
17 Express from St. John and Halifax	12.45

All trains are run by Atlantic Standard time. Twenty five O'clock is mid-night, Moncton, N. B. JAN. 15th 1907
 NOTE: A special train (with Buffet Sleeping Car attached) will leave Truro every Saturday for Sydney and Sydney nine after arrival of No. 34 (Maritime Express) from Montreal.