

CHESS.

The proprietors of THE CRITIC offer two prizes—to consist of books on Chess—to those subscribers who shall send in the greatest number of correct solutions during the current year. No entrance fee required. All communications for this department should be addressed—**Chess Editor, Windsor, N. S.**

TO CORRESPONDENTS.

J. W. W.—P to KB4 stops your No. 3. It is not usual for a two-mover to commence with a check.

"D."—Your letter came too late for last issue. We hope you are no longer mystified by Nos. 1 and 2. Your improved solution of No. 2 is stopped by B to K3.

L. JOHNSTONE—We are much gratified by your kind letter.

W. E. P.—Yours received and forwarded to manager.

E. S. CREED.—In No. 2, B takes Kt; in No. 3, Kt interposes.

H. STAIRS.—Your correct solution of No. 3 received.

In the solution of Problem No. 1, several of our correspondents do not seem to understand that if the Black Knight at Q2 moves, White can then mate by Q to K5.

N. B.—Correspondents should in all cases give their full names and addresses, but not necessarily for publication.

SOLUTION OF PROBLEM NO. 4.

Q to Q Kt5, etc.

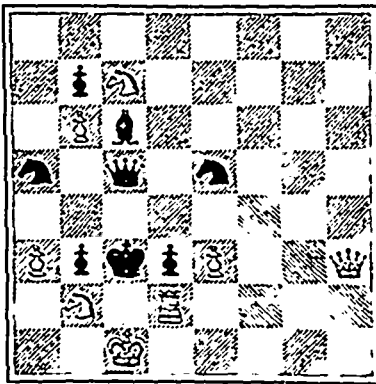
(Correct solutions received from Rev. C. E. Willets, "Edgie," V. G. Gray, L. M. Wilkins, L. Johnstone, J. W. W., E. S. Creed, W. Lawson, H. B. Stairs, C. Cutbill, F. A. P., P. H. Brown, Mrs. H. Moseley, and "D.")

We should be pleased if our solvers would in future, together with their solutions, send us their critical opinions of the problems set each week.

PROBLEM NO. 6.

By S. Loyd.

BLACK.



WHITE.

White to play and mate in 2 moves.

The St. Petersburg players are very inebriated at winning their correspondence game with the British Chess Club of London. They have just celebrated their victory by a grand banquet, presented their captain with a handsome souvenir of the event, and decided to immediately challenge Vienna to a similar match.

CANADIAN CHESS ASSOCIATION.

The following is the final score:—E. Pope, 4; J. E. Narraway, 4; N. MacLeod, 4; G. Barry, 2; C. P. Champion, 1, and E. Sanderson, 1. The ties are now being played off.

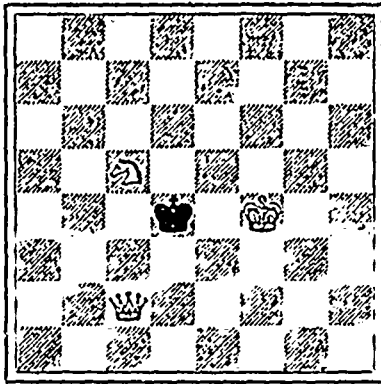
Blank forms, (suitable for both Chess and Checkers), for copying down problems, positions, endings, etc. Fifty for 25c, post free. Small sheets, numbered, and with appropriate headings, for recording games. Twenty-five for 15c. For sale at Critic Office, Halifax.

PROBLEM NO. 7.

By M. Paul Loquin.

(Inserted specially for beginners.)

BLACK.



WHITE.

White to play and mate in 2 moves.

Game played, January 19th, in the Canadian Chess Association Tourney between Messrs. N. MacLeod, of Quebec, and J. E. Narraway, of Ottawa.

WHITE.

N. MacLeod.

- 1 P to K4
- 2 P to QB3 (a)
- 3 P takes P
- 4 Kt to KB3
- 5 B to K2.
- 6 P to KR 3
- 7 P to Q4
- 8 B to K3
- 9 QKt to Q2
- 10 Q to B2
- 11 Kt takes Kt
- 12 Kt to Q2
- 13 Castles Q R
- 14 P to KB4
- 15 P to K Kt4
- 16 QR to KBsq
- 17 B takes P
- 18 Kt to Q Kt3
- 19 K to Kt sq
- 20 Q takes Kt
- 21 P takes B
- 22 P to KB5
- 23 P to KR4
- 24 P to K Kt5
- 25 P to K R5
- 26 Q to K Kt3
- 27 P to KB6
- 28 P takes P ch
- 29 K R to K Kt sq

BLACK.

J. E. Narraway.

- 1 P to K3
- 2 P to Q4
- 3 P takes P
- 4 QB to Kt5 (b)
- 5 Kt to KB3
- 6 B to K3
- 7 B to K2
- 8 P to B3
- 9 Kt to K5 (c)
- 10 P to KB 4
- 11 BP takes Kt
- 12 Castles
- 13 Kt to Q2
- 14 P to Q Kt3 (d)
- 15 P to QB4
- 16 QB P takes P
- 17 B to KB3
- 18 Kt to QB4
- 19 Kt takes Kt
- 20 B takes B
- 21 R to QBsq
- 22 B to KB2
- 23 R to QB3
- 24 B to Ksq
- 25 R to Q3
- 26 R to Q2
- 27 P takes P
- 28 K to R sq
- 29 Q R to KB2 (e)

NOTES BY THE EDITOR.

- (a) The usual move is P to Q4.
- (b) Weak; B to K3 or KB4 would be better.
- (c) We should prefer Q Kt to Q2 at once.
- (d) Black appears perfectly unconscious of the strong attack which White is preparing on the King's side.
- (e) White's departure from the beaten track (at move 2), seems to have turned out very successful.

DRAUGHTS-CHECKERS

The proprietors of THE CRITIC offer two prizes—to consist of books on Checkers—to those subscribers who shall send in the greatest number of correct solutions during the current year. No entrance fee required. All Checker communications should be addressed to W. Forsyth, 36 Grafton Street, Halifax.

Mrs H. Moseley's solution to Problem 2 was as follows, the starting position being: Black—men on 1 and 13, king on 17; White—men on 11, 25, and 28; black to play and win.

- 17—21 17—22 20—16 6—10
- 25 22 16 12 9 14 11 8
- 21—25 22—26 18—9 19—16
- 22 18 12 8 11 7 8 4
- 25—22 26—31 (1) 9—6 16—12
- (a) 18 15 8 3 7 2 4 8
- 22—18 31—27 6—1 10—15
- 28 24 3 7 (b) 2 7 8 4
- 1—6 27—24 16—19 15—11
- 24 20 7 2 15 11
- 13—17 24—20 1—6 and
- 20, 16 2 9 7 3 wins

(a) White's best move.

(b) In our absence the sub-editor accepted this solution as correct, not noticing the weak point here, where 15 11 instead of 2 7, would make it a draw for white. White we are anxious to give Mrs. Moseley full credit for seeing the result of this fine ending, still it is our duty to show any weak points that we may discover.—[C. Ed.]

(1) We would suggest the following variation from this point as being shorter and stronger—

- 16—19 6—10 16—12 15—11
- 15 11 11 8 4 8
- 9—6 19—16 10—15 and wins
- 7 3 8 4 8 4

Solution to Problem 3.—Solved by James McEwan, Halifax, and W. N. Reinhardt, L'Anse-au-Loup.

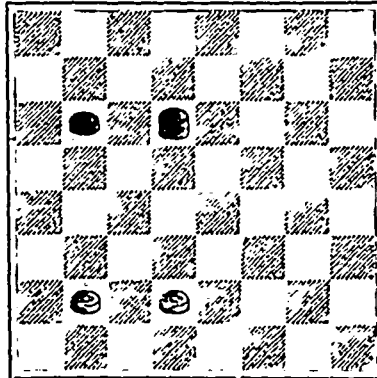
The starting position is as follows: Black—men on 1, 4, 5, 7, 10, 13, 20 and 25, king on 17; White—men on 6, 12, 14, 16, 19, 23, 26 and 27, king on 32. White to move and win.

- 26 22 12 8 26 30 15 18
- 17—26 4—11 17—22 29—25
- 32 28 19 12 8 4 30 26
- 10—17 26—19 13—17 25—29
- 28 32 32 30 4 8 18 22
- 1—10 5—9 17—21 21—25
- 16 11 30 26 8 11 26 30
- 7—16 13—17 22—25
- 27 24 12 8 11 15 and wins
- 20—27 9—13 25—29

PROBLEM 4.

By W. H. C. Wardell, Downsville, New York, in No. 2, Vol. 2, of the *Checkerist*, Tavares, Florida.

BLACK.—9 10, k.



WHITE.—25, 26.

Black to move and win.

N.B.—Solutions to problems should be mailed not later than one week after they appear in these columns, in order to enable the editor to study them and to show any weak points that there may be in them.

GAME 3.

"SINGLE CORNER."

This was the only game won by Mr. Reed, of Pittsburg, Pa., in the recent match with Mr. Barker, of Boston, for \$400 and the championship of America. Barker had the black.

- 11—12 9—13 10—15 6—9
- (a) 22 18 27 23 18 11 27 23
- 15—22 11—15 8—15 9—11
- 25 18 31 27 19 10 30 25
- 8—11 3—8 6—15 13—17
- 23 19 23 18 24 19 23 19
- 9—14 14—23 15—24 Reed
- 18 9 27 11 28 19 wins
- 5—14 7—23 4—8
- 29 25 26 19 19 15
- 6—9 2—6 1—3
- 25 22 22 18 32 27

(a) These two moves form the "Single Corner," by which name this opening is known, and is probably more generally played than any other.

Will any of our readers show the latest stage at which Barker could have secured a draw, and how?

J. L. BLAUVELT,
PORTRAIT ARTIST,
STUDIO,
57 GRANVILLE STREET
HALIFAX, N. S.

ARMY & NAVY DEPOT.

James Scott & Co.
WHOLESALE & RETAIL
Grocers & Wine Merchants,
117 and 118 GRANVILLE STREET,

Offer for Sale in Bond or Duty Paid:

- 350 cases Old Brandy
- 275 " Scotch and Irish Whiskey
- 170 " Holland Gin
- 75 " Plymouth and Old Tom Gin
- 400 doz. Port and Sherry
- 300 cases Claret
- 60 " Hoek and Moselle
- 400 doz. Ale and Porter, pils. & qts.
- 100 cases Champagne

—ALSO—
Angostura, Orange, and John Bull BITTERS.

A Full Line of GROCERIES always on hand.

OXFORD AND NEW GLASGOW RAILWAY.
Tender for Wharf at Pugwash Harbor, Nova Scotia.

SEALED TENDERS addressed to the undersigned, and marked "Tender for Wharf," will be received up to noon on Tuesday, February 11th, 1888.

Plans and Specifications may be seen and forms of tender obtained upon application at the office of the Division Engineer, in the Town of Wallace, Nova Scotia.

Each tender must be accompanied by a deposit equal to five per cent. of the amount of the tender. This deposit may consist of cash or of an accepted bank cheque, made payable to the Minister of Railways and Canals, and it will be forfeited if the party tendering neglects or refuses to enter into a contract when called upon to do so, or if after entering into the contract he fails to complete the work satisfactorily, according to the specification. If the tender is not accepted, the deposit will be returned.

Tenders must be made on the printed form supplied. The Department will not be bound to accept the lowest or any tender.

A. P. BRADLEY,
Secretary of the Department of Railways and Canals.
Ottawa, January 25th, A.D., 1888.

TRURO FISH MARKET,
INGLIS STREET.

Fresh and Dried Fish of all kinds always on hand. Orders left at above place promptly attended to.

CHAS. ROSS, Prop'r.

Printed by Halifax Printing Co.,
161 Hollis Street, Halifax, N. S.