

PUMPING MACHINERY

FOR

Waterworks and Mines

OFFICIAL TRIAL

LEEDS WATERWORKS

Steam per Pump
Horse Power per Hour

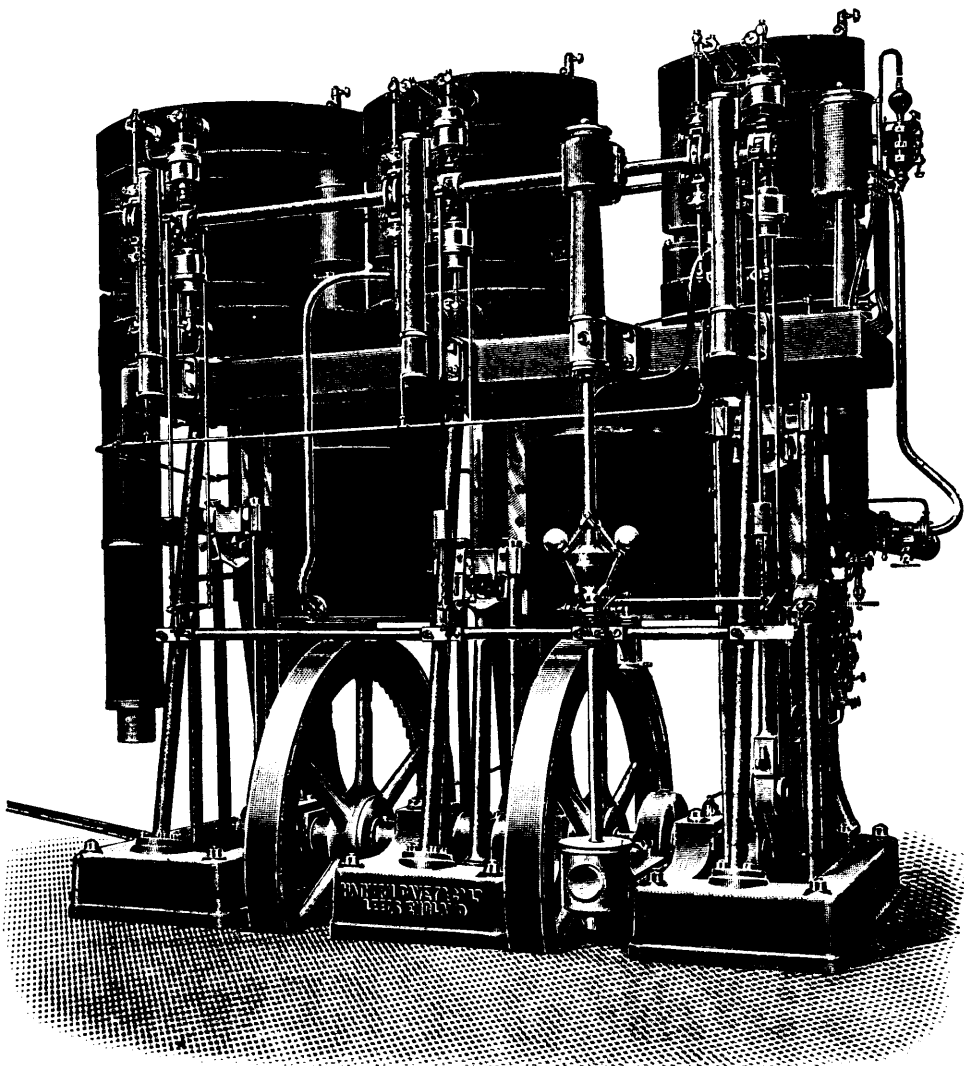
13,051 lbs.

Steam per Indicated
Horse Power per Hour

11.91 lbs.

**Mechanical
Efficiency**

91 per cent.



HATHORN DAVEY & Co. Ltd. LEEDS, ENGLAND.

Sole Canadian
Representatives

PEACOCK BROTHERS

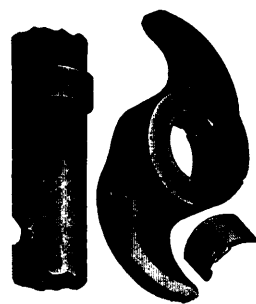
Canada Life Building
MONTREAL.

ADAMANTINE SHOES & DIES ALSO CHROME CAST STEEL.

THE CANADA PATENT SELF-LOCKING CAM

TAPPETS, BOSSES, ROLL SHELL and CRUSHER PLATES. Also Rolled Parts for Huntington and other Mills. These castings are extensively used in all the Mining States and Territories throughout the World. Guaranteed to prove better and cheaper than any others. Orders solicited subject to above conditions. When ordering send sketch with exact dimensions. Send for Illustrated Catalogue to

CHROME STEEL WORKS, CHROME, NEW JERSEY, U.S.A.



Canda Cam.

F. E. CANDA, President.

G. J. CANDA, Vice-President.

F. MORA CANDA, Secretary.

T. I. JONES, Treasurer.

ORES TESTED

In car load lots or smaller quantities, by any and all modern metallurgical processes.
Best equipped plant in the world. Write for Booklet.

THE DENVER ORE TESTING & SAMPLING CO.

Office: 527 17th Street.
Works: Corner Bryant Street and West 16th Avenue, } DENVER, COLO.

BONNEVIE & LEE, Managers.

C. A. HOYT, Chemist & Metallurgist.

Are You Confronted with a
Difficult Ore-Separating Problem?

THE WETHERILL MAGNETIC SEPARATING PROCESS

May Prove the Solution.

For information and for Illustrated Pamphlet, apply to
WETHERILL SEPARATING CO., 52 Broadway, New York.

GOLD MEDAL, awarded at the WORLD'S FAIR, ST. LOUIS, MO.

Manufacturing Agents for Canada, ROBERT GARDNER & SON, Montreal, P.Q.