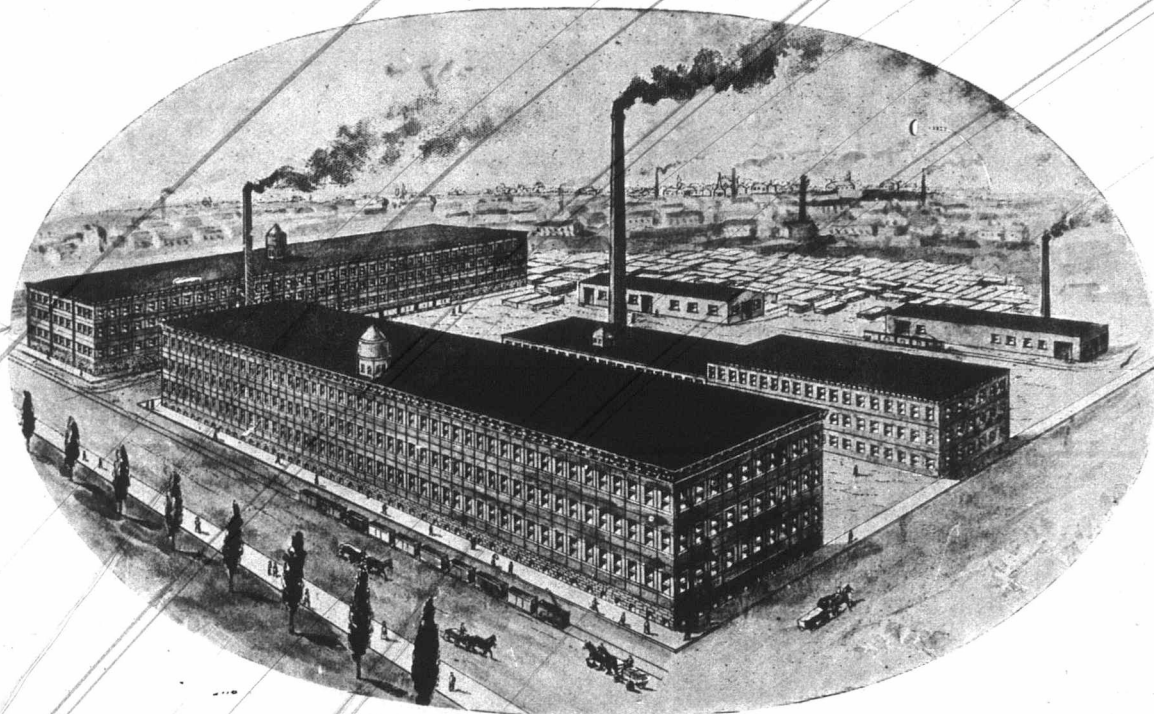


Size of Main Building 395 x 81, Three Stories, Brick. Size of Store Room, Shipping Room and Offices 267 x 60, Three Stories, Brick. Four Engines, Dynamo and Saw Mill on the Premises.



**OUR NEW FACTORY—THE LARGEST CARRIAGE FACTORY IN CANADA BARRING NONE.**

This cut is as accurate as possible, and is unlike some cuts of Canadian carriage factories we have seen, in this respect, viz:— It is not on a highly exaggerated scale, but rather the opposite. For the reason that we were never able to fill our orders in our old premises, we decided, when rebuilding, to erect a factory which would give us ample room to do full justice to our work, and which would meet all demands made upon us for at least a few years.