

# Canada Foundry Company Limited

HEAD OFFICE—TORONTO, ONT.

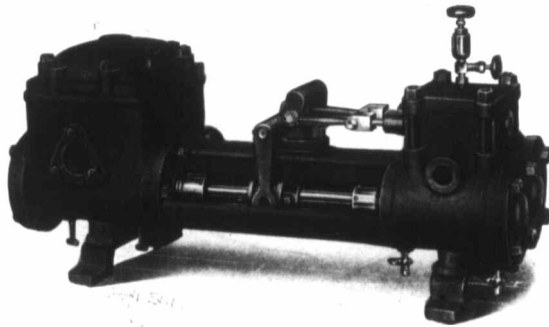
HYDRAULIC DEPARTMENT.

BULLETIN No. 34.  
SUPERSEDING 29.

## SINGLE AND DUPLEX STEAM PUMPS FOR GENERAL PURPOSES.

On the following pages are illustrated and described a few of the standard Single and Duplex Steam Pumps manufactured by this Company for the handling of fluids against ordinary pressures, and for general purposes.

In their design it will be noted that strength and durability have not been sacrificed to secure low costs, and that the most approved practice has been adhered to in the relation of the stroke to cylinder sizes. This point is one which intending purchasers will do well to consider, as it must be obvious, that within certain limits, the longer the stroke the more economical will be the operation of the pump, while the number of strokes per minute and consequent wear and tear is reduced to a minimum.



DUPLEX BOILER FEED PUMP.

Special tools are used in the manufacture, and all parts have been standardized with the object of facilitating repairs, when necessary, thus avoiding possible annoyance and delay in procuring spare parts.

Every improvement which experience has suggested as valuable and desirable and which tends towards durability and economy in operation, has been embodied in their design, with the idea of placing upon the market a line of apparatus which is typical of the highest development in its class.

The material entering into their construction is carefully selected, the workmanship is strictly first-class in every particular, and each pump is subjected to a thorough test before shipment.

*Any reference to "gallons" will be understood as meaning U.S. or Wine Gallons.*