

MARKET ADVANCED FOR RASPBERRIES

Tomato Prices Also Went Up on Account of Scarcity.

CHERRIES ARE WEAKER

First Picking of Canadian Peas Received—Quality Below Normal.

Raspberries were rather scarce on the market yesterday, and sold at from 13c to 15c per box, an advance of 2c per box over Wednesday's price.

Tomatoes went still higher yesterday because of the decreased shipments, the bulk of them selling at from 90c to \$1.10, one or two commission merchants reported having received \$1.10 per basket for a few extra choice ones.

Cherries were easier in price yesterday, and there was very poor demand for them. They sold at from 45c to 50c per basket. Extra choice brought as high as 90c per 11-quart basket.

Peas, that are the Canadians, appeared on the market for the first time this season yesterday. They were not of very good quality, however.

Wholesale Fruits Apples—Canadian, 50c to 80c per basket; Maryland, \$1.00 per hamper; California, \$2 per box.

Blueberries—\$1.25 to \$1.50 per 11-quart basket. Bananas—\$1.25 to \$1.75 per bunch.

Cantaloupes—Finest quality Indiana, 3 dozen to box, \$5 per box; 1 dozen cases, \$2 per case, and baskets containing 15 to 18, \$2 per basket.

Cherries—Red, 45c to 50c per 11-quart basket; choice, 75c per 11-quart basket. Currants—Red, 40c to 50c per 11-quart basket.

Currants—Black, \$1 to \$1.25 per 11-quart basket; extra choice, \$1.50. Gooseberries—Small and medium fruit, 50c to 55c per 11-quart basket, and large fruit, 65c per 11-quart basket.

Grapes—Maine, Cal., \$4 per box. Grapes—Cal., \$2.50 to \$4 per box. Lawton or Umbria berries—150 to 200 per box.

Limes—\$1.25 per hundred. Lemons—\$4.00 to \$4.75 per box. Oranges—Valencia, \$2 to \$2.50 per box. Pineapples—24's, \$3.50; 30's, \$4.25 per box.

Peaches—California, St. Johns, \$1 per box; California Crawford's \$1.25 per box; baskets crates of Georgia \$2 to \$2.50 per crate.

Pears—Cal., Bartlett, \$2.75 to \$3.25 per box. Plums—Cal., \$1.50 to \$2 per box. Plums—Canadian, 40c to 50c per basket.

Raspberries—12c to 15c per box. Watermelons—30c to 45c each. Wholesale Vegetables.

Beets—10c to 25c per dozen bunches. Beans—10c to 25c per 11-quart basket. Celery—35c to 40c per dozen. Corn—1.50 to 1.75 per sack.

Cucumbers—35c to 50c per basket. Egg plant—1.25 per basket. Beans—Texas Bermudas, \$3.25 per 50 per box.

Onions—Spanish, \$5 per crate. Onions—Large green, \$4 per crate, 150 to 200 per dozen bunch; 50c per basket. Lettuce—Head, \$1.50 per basket.

Parley—10c per basket 11-quart basket. Parsnips—45c to 50c per 11-quart basket. Peppers—Green, 40c to 50c per 11-quart basket.

Potatoes—New Canadian, \$1.75 per bag; 40c per basket. American, \$4 per bbl. Potatoes—Old, \$2 to \$2.25 per bag.

Turnips—White, 45c to 50c per basket. Tomatoes—80c to \$1 per 11-quart basket. Vegetable marrow—30c to 40c per basket.

Wholesale Fish Quotations. Whitefish—1c to 1.2c per lb. Salmon—1 1/2 to 1.5c per lb. Halibut—1 1/2 to 1.5c per lb.

Finan haddock—5c per lb. Haddock—4c per lb. Mackerel—25c and 35c each. Clams—\$12.50 barrels, \$1.50 per 100.

LOBSTER—25c and 30c per lb. Sea salmon—20c per lb. Pickled—12c per lb. Pike—7c and 8c per lb.

ST. LAWRENCE MARKET. There were 11 loads of hay brought on the market yesterday, new selling at \$13 and \$19 per ton, and the old at \$9.00 and \$11 per ton.

The creamy butter in lb. squares is slightly dearer at the wholesale, selling at 25c to 27c per lb., an advance of 2c over 1d.

Eggs have also advanced 1c per dozen and are now selling at 24c per dozen wholesale. There is not any demand for spring ducks in the city, consequently the price is down to 30c per lb.

Retail Prices. Wheat, full, bushel, \$1.60 to \$1.65. Barley, bushel, \$1.40 to \$1.45. Peas, bushel, \$1.40 to \$1.45. Oats, bushel, \$1.20 to \$1.25. Rye, bushel, \$1.40 to \$1.45. Buckwheat, bushel, \$1.70 to \$1.75.

Hay, per ton, \$20.00 to \$21.00. Hay, new, per ton, \$18.00 to \$19.00. Hay, mixed, per ton, \$17.00 to \$18.00. Hay, cut, per ton, \$19.00 to \$20.00. Straw, bundled, ton, \$17.00.

Wheat, No. 1, car lots, \$14.50 to \$15.00. Hay, No. 1, car lots, \$13.00 to \$14.00. Straw, car lots, \$8.00 to \$9.00. Potatoes, new, American, \$4.00 to \$4.25.

Potatoes, new, Canadian, \$0.50 to \$0.55. Potatoes, old, per bag, \$2.00 to \$2.25. Butter, creamery, lb., \$0.25 to \$0.27. Butter, superior, dairy, \$0.22 to \$0.23. Eggs, new-laid, \$0.24.

FRESH MEATS, WHOLESALE. Beef, forequarters, cwt., \$11.00 to \$12.00. Beef, hindquarters, cwt., \$10.00 to \$11.00. Beef, choice sides, cwt., \$13.00 to \$14.00.

Beef, medium, cwt., \$11.50 to \$12.50. Beef, common, cwt., \$9.00 to \$10.00. Light mutton, cwt., \$11.00 to \$12.00. Heavy mutton, cwt., \$10.00 to \$11.00.

Lamb, spring, dressed, lb., \$0.20 to \$0.22. Veal, No. 1, cwt., \$13.00 to \$14.00. Veal, common, cwt., \$10.00 to \$11.00. Dressed hogs, cwt., \$11.50 to \$12.50. Hogs over 150 lbs., \$10.00 to \$11.00.

POULTRY, WHOLESALE. Mr. M. P. Mallon, wholesale poultry gives the following quotations: Cold Storage Prices. Chickens, per lb., \$0.15 to \$0.20. Hens, per lb., \$0.12 to \$0.17. Ducks, per lb., \$0.18 to \$0.20. Turkeys, per lb., \$0.18 to \$0.23.

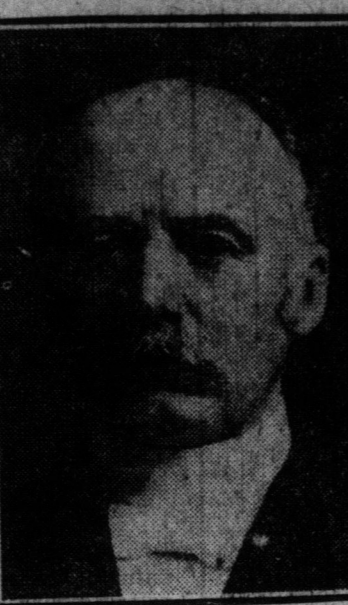
Live Weight Prices. Chickens, per lb., \$0.20 to \$0.25. Hens, per lb., \$0.12 to \$0.14. Ducks, old, per lb., \$0.10 to \$0.12. Turkeys, per lb., \$0.16 to \$0.23.

Prices priced daily by E. T. Carter & Co., 45 East Front Street, Dealers in Wool, Yarn, Hides, Calveskin and Sheepskins, Raw Fur, Tallow, etc. Hides. Lambskin and pelts, \$0.35 to \$0.60. City hides, per lb., \$0.12 to \$0.14. Calveskin, lb., \$0.15 to \$0.18. Horsehair, per lb., \$0.37 to \$0.38. Horshides, No. 1, \$1.50 to \$1.60. Tallow, No. 1, per lb., \$0.05 to \$0.07. Wool, unwashed, coarse, \$0.17 to \$0.18. Wool, unwashed, fine, \$0.19 to \$0.20. Wool, washed, coarse, \$0.26 to \$0.27. Wool, washed, fine, \$0.27 to \$0.28.

Ontario wheat—No. 2, 98c to 99c, nominal. Canadian western oats—No. 2, 42 1/2c, bay ports; No. 3, 41 1/2c, immediate shipment. Manitoba flour—Quotations at Toronto are: First patents, \$5.60 in cotton and \$5.50 in jute; second patents, \$5.10 in cotton and \$5 in jute; strong bakers, \$4.80 in jute.

Ontario oats—No. 2 white, 38c to 40c, outside, and 41 1/2c to 42 1/2c, track, Toronto. Buckwheat—38c to 39c. Rye—58c to 64c, nominal. Bran—Manitoba, \$23, in bags, Toronto, and shorts \$25, Toronto; middlings, \$26 to \$27. Ontario flour—50 per cent. patents, \$3.60 to \$3.65, seaboard. Rolled oats—\$2.25 per bag of 90 pounds. Manitoba wheat—Bay ports, No. 1 northern, 92 1/2c; No. 2, 84 1/2c. Barley—Ontario, No. 2, 56c to 58c, outside. Corn—No. 2 yellow, 75c, track, Port Colborne; 75c c.i.f., Collingwood.

Vice-President Imperial Life



E. T. Malone, K.C., was elected vice-president of the Imperial Life Assurance Company at the meeting of the board yesterday.

Straw, loose, ton, \$10.00. Dairy Produce. Eggs, new, \$0.25 to \$0.33. Eggs, duck, \$0.60 to \$0.60. Butter, farmers' dairy, \$0.25 to \$0.25. Butter, superior, \$0.27 to \$0.28.

POULTRY. Chickens, spring, dressed, \$0.30 to \$0.35. Hens, dressed, lb., \$0.18 to \$0.20. Ducks, spring, dressed, \$0.20 to \$0.22. Squabs, dressed, each, \$0.17 to \$0.20.

FARM PRODUCE, WHOLESALE. Hay, No. 1, car lots, \$14.50 to \$15.00. Hay, No. 2, car lots, \$13.00 to \$14.00. Straw, car lots, \$8.00 to \$9.00. Potatoes, new, American, \$4.00 to \$4.25. Potatoes, new, Canadian, \$0.50 to \$0.55. Potatoes, old, per bag, \$2.00 to \$2.25. Butter, creamery, lb., \$0.25 to \$0.27. Butter, superior, dairy, \$0.22 to \$0.23. Eggs, new-laid, \$0.24.

FRESH MEATS, WHOLESALE. Beef, forequarters, cwt., \$11.00 to \$12.00. Beef, hindquarters, cwt., \$10.00 to \$11.00. Beef, choice sides, cwt., \$13.00 to \$14.00. Beef, medium, cwt., \$11.50 to \$12.50. Beef, common, cwt., \$9.00 to \$10.00. Light mutton, cwt., \$11.00 to \$12.00. Heavy mutton, cwt., \$10.00 to \$11.00. Lamb, spring, dressed, lb., \$0.20 to \$0.22. Veal, No. 1, cwt., \$13.00 to \$14.00. Veal, common, cwt., \$10.00 to \$11.00. Dressed hogs, cwt., \$11.50 to \$12.50. Hogs over 150 lbs., \$10.00 to \$11.00.

POULTRY, WHOLESALE. Mr. M. P. Mallon, wholesale poultry gives the following quotations: Cold Storage Prices. Chickens, per lb., \$0.15 to \$0.20. Hens, per lb., \$0.12 to \$0.17. Ducks, per lb., \$0.18 to \$0.20. Turkeys, per lb., \$0.18 to \$0.23.

Live Weight Prices. Chickens, per lb., \$0.20 to \$0.25. Hens, per lb., \$0.12 to \$0.14. Ducks, old, per lb., \$0.10 to \$0.12. Turkeys, per lb., \$0.16 to \$0.23.

Prices priced daily by E. T. Carter & Co., 45 East Front Street, Dealers in Wool, Yarn, Hides, Calveskin and Sheepskins, Raw Fur, Tallow, etc. Hides. Lambskin and pelts, \$0.35 to \$0.60. City hides, per lb., \$0.12 to \$0.14. Calveskin, lb., \$0.15 to \$0.18. Horsehair, per lb., \$0.37 to \$0.38. Horshides, No. 1, \$1.50 to \$1.60. Tallow, No. 1, per lb., \$0.05 to \$0.07. Wool, unwashed, coarse, \$0.17 to \$0.18. Wool, unwashed, fine, \$0.19 to \$0.20. Wool, washed, coarse, \$0.26 to \$0.27. Wool, washed, fine, \$0.27 to \$0.28.

Ontario wheat—No. 2, 98c to 99c, nominal. Canadian western oats—No. 2, 42 1/2c, bay ports; No. 3, 41 1/2c, immediate shipment. Manitoba flour—Quotations at Toronto are: First patents, \$5.60 in cotton and \$5.50 in jute; second patents, \$5.10 in cotton and \$5 in jute; strong bakers, \$4.80 in jute.

Ontario oats—No. 2 white, 38c to 40c, outside, and 41 1/2c to 42 1/2c, track, Toronto. Buckwheat—38c to 39c. Rye—58c to 64c, nominal. Bran—Manitoba, \$23, in bags, Toronto, and shorts \$25, Toronto; middlings, \$26 to \$27. Ontario flour—50 per cent. patents, \$3.60 to \$3.65, seaboard. Rolled oats—\$2.25 per bag of 90 pounds. Manitoba wheat—Bay ports, No. 1 northern, 92 1/2c; No. 2, 84 1/2c. Barley—Ontario, No. 2, 56c to 58c, outside. Corn—No. 2 yellow, 75c, track, Port Colborne; 75c c.i.f., Collingwood.

Wheat, No. 1, car lots, \$14.50 to \$15.00. Hay, No. 1, car lots, \$13.00 to \$14.00. Straw, car lots, \$8.00 to \$9.00. Potatoes, new, American, \$4.00 to \$4.25. Potatoes, new, Canadian, \$0.50 to \$0.55. Potatoes, old, per bag, \$2.00 to \$2.25. Butter, creamery, lb., \$0.25 to \$0.27. Butter, superior, dairy, \$0.22 to \$0.23. Eggs, new-laid, \$0.24.

FRESH MEATS, WHOLESALE. Beef, forequarters, cwt., \$11.00 to \$12.00. Beef, hindquarters, cwt., \$10.00 to \$11.00. Beef, choice sides, cwt., \$13.00 to \$14.00. Beef, medium, cwt., \$11.50 to \$12.50. Beef, common, cwt., \$9.00 to \$10.00. Light mutton, cwt., \$11.00 to \$12.00. Heavy mutton, cwt., \$10.00 to \$11.00. Lamb, spring, dressed, lb., \$0.20 to \$0.22. Veal, No. 1, cwt., \$13.00 to \$14.00. Veal, common, cwt., \$10.00 to \$11.00. Dressed hogs, cwt., \$11.50 to \$12.50. Hogs over 150 lbs., \$10.00 to \$11.00.

POULTRY, WHOLESALE. Mr. M. P. Mallon, wholesale poultry gives the following quotations: Cold Storage Prices. Chickens, per lb., \$0.15 to \$0.20. Hens, per lb., \$0.12 to \$0.17. Ducks, per lb., \$0.18 to \$0.20. Turkeys, per lb., \$0.18 to \$0.23.

Live Weight Prices. Chickens, per lb., \$0.20 to \$0.25. Hens, per lb., \$0.12 to \$0.14. Ducks, old, per lb., \$0.10 to \$0.12. Turkeys, per lb., \$0.16 to \$0.23.

Prices priced daily by E. T. Carter & Co., 45 East Front Street, Dealers in Wool, Yarn, Hides, Calveskin and Sheepskins, Raw Fur, Tallow, etc. Hides. Lambskin and pelts, \$0.35 to \$0.60. City hides, per lb., \$0.12 to \$0.14. Calveskin, lb., \$0.15 to \$0.18. Horsehair, per lb., \$0.37 to \$0.38. Horshides, No. 1, \$1.50 to \$1.60. Tallow, No. 1, per lb., \$0.05 to \$0.07. Wool, unwashed, coarse, \$0.17 to \$0.18. Wool, unwashed, fine, \$0.19 to \$0.20. Wool, washed, coarse, \$0.26 to \$0.27. Wool, washed, fine, \$0.27 to \$0.28.

Ontario wheat—No. 2, 98c to 99c, nominal. Canadian western oats—No. 2, 42 1/2c, bay ports; No. 3, 41 1/2c, immediate shipment. Manitoba flour—Quotations at Toronto are: First patents, \$5.60 in cotton and \$5.50 in jute; second patents, \$5.10 in cotton and \$5 in jute; strong bakers, \$4.80 in jute.

Ontario oats—No. 2 white, 38c to 40c, outside, and 41 1/2c to 42 1/2c, track, Toronto. Buckwheat—38c to 39c. Rye—58c to 64c, nominal. Bran—Manitoba, \$23, in bags, Toronto, and shorts \$25, Toronto; middlings, \$26 to \$27. Ontario flour—50 per cent. patents, \$3.60 to \$3.65, seaboard. Rolled oats—\$2.25 per bag of 90 pounds. Manitoba wheat—Bay ports, No. 1 northern, 92 1/2c; No. 2, 84 1/2c. Barley—Ontario, No. 2, 56c to 58c, outside. Corn—No. 2 yellow, 75c, track, Port Colborne; 75c c.i.f., Collingwood.

Wheat, No. 1, car lots, \$14.50 to \$15.00. Hay, No. 1, car lots, \$13.00 to \$14.00. Straw, car lots, \$8.00 to \$9.00. Potatoes, new, American, \$4.00 to \$4.25. Potatoes, new, Canadian, \$0.50 to \$0.55. Potatoes, old, per bag, \$2.00 to \$2.25. Butter, creamery, lb., \$0.25 to \$0.27. Butter, superior, dairy, \$0.22 to \$0.23. Eggs, new-laid, \$0.24.

FRESH MEATS, WHOLESALE. Beef, forequarters, cwt., \$11.00 to \$12.00. Beef, hindquarters, cwt., \$10.00 to \$11.00. Beef, choice sides, cwt., \$13.00 to \$14.00. Beef, medium, cwt., \$11.50 to \$12.50. Beef, common, cwt., \$9.00 to \$10.00. Light mutton, cwt., \$11.00 to \$12.00. Heavy mutton, cwt., \$10.00 to \$11.00. Lamb, spring, dressed, lb., \$0.20 to \$0.22. Veal, No. 1, cwt., \$13.00 to \$14.00. Veal, common, cwt., \$10.00 to \$11.00. Dressed hogs, cwt., \$11.50 to \$12.50. Hogs over 150 lbs., \$10.00 to \$11.00.

POULTRY, WHOLESALE. Mr. M. P. Mallon, wholesale poultry gives the following quotations: Cold Storage Prices. Chickens, per lb., \$0.15 to \$0.20. Hens, per lb., \$0.12 to \$0.17. Ducks, per lb., \$0.18 to \$0.20. Turkeys, per lb., \$0.18 to \$0.23.

Live Weight Prices. Chickens, per lb., \$0.20 to \$0.25. Hens, per lb., \$0.12 to \$0.14. Ducks, old, per lb., \$0.10 to \$0.12. Turkeys, per lb., \$0.16 to \$0.23.

Prices priced daily by E. T. Carter & Co., 45 East Front Street, Dealers in Wool, Yarn, Hides, Calveskin and Sheepskins, Raw Fur, Tallow, etc. Hides. Lambskin and pelts, \$0.35 to \$0.60. City hides, per lb., \$0.12 to \$0.14. Calveskin, lb., \$0.15 to \$0.18. Horsehair, per lb., \$0.37 to \$0.38. Horshides, No. 1, \$1.50 to \$1.60. Tallow, No. 1, per lb., \$0.05 to \$0.07. Wool, unwashed, coarse, \$0.17 to \$0.18. Wool, unwashed, fine, \$0.19 to \$0.20. Wool, washed, coarse, \$0.26 to \$0.27. Wool, washed, fine, \$0.27 to \$0.28.

Ontario wheat—No. 2, 98c to 99c, nominal. Canadian western oats—No. 2, 42 1/2c, bay ports; No. 3, 41 1/2c, immediate shipment. Manitoba flour—Quotations at Toronto are: First patents, \$5.60 in cotton and \$5.50 in jute; second patents, \$5.10 in cotton and \$5 in jute; strong bakers, \$4.80 in jute.

Ontario oats—No. 2 white, 38c to 40c, outside, and 41 1/2c to 42 1/2c, track, Toronto. Buckwheat—38c to 39c. Rye—58c to 64c, nominal. Bran—Manitoba, \$23, in bags, Toronto, and shorts \$25, Toronto; middlings, \$26 to \$27. Ontario flour—50 per cent. patents, \$3.60 to \$3.65, seaboard. Rolled oats—\$2.25 per bag of 90 pounds. Manitoba wheat—Bay ports, No. 1 northern, 92 1/2c; No. 2, 84 1/2c. Barley—Ontario, No. 2, 56c to 58c, outside. Corn—No. 2 yellow, 75c, track, Port Colborne; 75c c.i.f., Collingwood.

Wheat, No. 1, car lots, \$14.50 to \$15.00. Hay, No. 1, car lots, \$13.00 to \$14.00. Straw, car lots, \$8.00 to \$9.00. Potatoes, new, American, \$4.00 to \$4.25. Potatoes, new, Canadian, \$0.50 to \$0.55. Potatoes, old, per bag, \$2.00 to \$2.25. Butter, creamery, lb., \$0.25 to \$0.27. Butter, superior, dairy, \$0.22 to \$0.23. Eggs, new-laid, \$0.24.

FRESH MEATS, WHOLESALE. Beef, forequarters, cwt., \$11.00 to \$12.00. Beef, hindquarters, cwt., \$10.00 to \$11.00. Beef, choice sides, cwt., \$13.00 to \$14.00. Beef, medium, cwt., \$11.50 to \$12.50. Beef, common, cwt., \$9.00 to \$10.00. Light mutton, cwt., \$11.00 to \$12.00. Heavy mutton, cwt., \$10.00 to \$11.00. Lamb, spring, dressed, lb., \$0.20 to \$0.22. Veal, No. 1, cwt., \$13.00 to \$14.00. Veal, common, cwt., \$10.00 to \$11.00. Dressed hogs, cwt., \$11.50 to \$12.50. Hogs over 150 lbs., \$10.00 to \$11.00.

POULTRY, WHOLESALE. Mr. M. P. Mallon, wholesale poultry gives the following quotations: Cold Storage Prices. Chickens, per lb., \$0.15 to \$0.20. Hens, per lb., \$0.12 to \$0.17. Ducks, per lb., \$0.18 to \$0.20. Turkeys, per lb., \$0.18 to \$0.23.

Live Weight Prices. Chickens, per lb., \$0.20 to \$0.25. Hens, per lb., \$0.12 to \$0.14. Ducks, old, per lb., \$0.10 to \$0.12. Turkeys, per lb., \$0.16 to \$0.23.

Prices priced daily by E. T. Carter & Co., 45 East Front Street, Dealers in Wool, Yarn, Hides, Calveskin and Sheepskins, Raw Fur, Tallow, etc. Hides. Lambskin and pelts, \$0.35 to \$0.60. City hides, per lb., \$0.12 to \$0.14. Calveskin, lb., \$0.15 to \$0.18. Horsehair, per lb., \$0.37 to \$0.38. Horshides, No. 1, \$1.50 to \$1.60. Tallow, No. 1, per lb., \$0.05 to \$0.07. Wool, unwashed, coarse, \$0.17 to \$0.18. Wool, unwashed, fine, \$0.19 to \$0.20. Wool, washed, coarse, \$0.26 to \$0.27. Wool, washed, fine, \$0.27 to \$0.28.

Ontario wheat—No. 2, 98c to 99c, nominal. Canadian western oats—No. 2, 42 1/2c, bay ports; No. 3, 41 1/2c, immediate shipment. Manitoba flour—Quotations at Toronto are: First patents, \$5.60 in cotton and \$5.50 in jute; second patents, \$5.10 in cotton and \$5 in jute; strong bakers, \$4.80 in jute.

Ontario oats—No. 2 white, 38c to 40c, outside, and 41 1/2c to 42 1/2c, track, Toronto. Buckwheat—38c to 39c. Rye—58c to 64c, nominal. Bran—Manitoba, \$23, in bags, Toronto, and shorts \$25, Toronto; middlings, \$26 to \$27. Ontario flour—50 per cent. patents, \$3.60 to \$3.65, seaboard. Rolled oats—\$2.25 per bag of 90 pounds. Manitoba wheat—Bay ports, No. 1 northern, 92 1/2c; No. 2, 84 1/2c. Barley—Ontario, No. 2, 56c to 58c, outside. Corn—No. 2 yellow, 75c, track, Port Colborne; 75c c.i.f., Collingwood.

Wheat, No. 1, car lots, \$14.50 to \$15.00. Hay, No. 1, car lots, \$13.00 to \$14.00. Straw, car lots, \$8.00 to \$9.00. Potatoes, new, American, \$4.00 to \$4.25. Potatoes, new, Canadian, \$0.50 to \$0.55. Potatoes, old, per bag, \$2.00 to \$2.25. Butter, creamery, lb., \$0.25 to \$0.27. Butter, superior, dairy, \$0.22 to \$0.23. Eggs, new-laid, \$0.24.

FRESH MEATS, WHOLESALE. Beef, forequarters, cwt., \$11.00 to \$12.00. Beef, hindquarters, cwt., \$10.00 to \$11.00. Beef, choice sides, cwt., \$13.00 to \$14.00. Beef, medium, cwt., \$11.50 to \$12.50. Beef, common, cwt., \$9.00 to \$10.00. Light mutton, cwt., \$11.00 to \$12.00. Heavy mutton, cwt., \$10.00 to \$11.00. Lamb, spring, dressed, lb., \$0.20 to \$0.22. Veal, No. 1, cwt., \$13.00 to \$14.00. Veal, common, cwt., \$10.00 to \$11.00. Dressed hogs, cwt., \$11.50 to \$12.50. Hogs over 150 lbs., \$10.00 to \$11.00.

POULTRY, WHOLESALE. Mr. M. P. Mallon, wholesale poultry gives the following quotations: Cold Storage Prices. Chickens, per lb., \$0.15 to \$0.20. Hens, per lb., \$0.12 to \$0.17. Ducks, per lb., \$0.18 to \$0.20. Turkeys, per lb., \$0.18 to \$0.23.

Live Weight Prices. Chickens, per lb., \$0.20 to \$0.25. Hens, per lb., \$0.12 to \$0.14. Ducks, old, per lb., \$0.10 to \$0.12. Turkeys, per lb., \$0.16 to \$0.23.

Prices priced daily by E. T. Carter & Co., 45 East Front Street, Dealers in Wool, Yarn, Hides, Calveskin and Sheepskins, Raw Fur, Tallow, etc. Hides. Lambskin and pelts, \$0.35 to \$0.60. City hides, per lb., \$0.12 to \$0.14. Calveskin, lb., \$0.15 to \$0.18. Horsehair, per lb., \$0.37 to \$0.38. Horshides, No. 1, \$1.50 to \$1.60. Tallow, No. 1, per lb., \$0.05 to \$0.07. Wool, unwashed, coarse, \$0.17 to \$0.18. Wool, unwashed, fine, \$0.19 to \$0.20. Wool, washed, coarse, \$0.26 to \$0.27. Wool, washed, fine, \$0.27 to \$0.28.

WHEAT PRICES ARE DRIVEN UPWARD

Black Rust—Rain in Russia—Corn Trading Exciting—Takes Jump.

DULNESS FEATURE OF CATTLE TRADE

Few Choice Live Stock Offered at Union Yards Yesterday.

DEALERS INDIFFERENT Hog Prices Gained Strength From Previous Day's Operations.

Receipts of live stock at the Union yards yesterday were 25 cars, 187 cattle, 1248 hogs, 481 sheep and lambs and 70 calves.

Notwithstanding the small number of fresh cattle on the market, trade was slow and the market seemingly very dull. The same condition prevails nearly every week at the close. One reason is that as a rule there are few good choice cattle offered, as was the case yesterday.

Another reason is that generally all the buyers have got their week's supply of cattle before Thursday, and consequently are not anxious to buy many cattle, and take more time in making their selections when buying.

The market for stockers, milkers and springers, sheep and calves was steady to firm, but lambs and hogs sold at higher prices than on Wednesday.

Butcher's Cattle. Good butchers' sold at \$1.35 to \$1.40; medium butchers' at \$1.25 to \$1.30; common butchers' at \$1.15 to \$1.20; good cowboys at \$1.25 to \$1.30; medium cowboys at \$1.15 to \$1.20; common cowboys at \$1.05 to \$1.10.

Sheep and Lambs. Sheep, light ewes, \$5 to \$6; heavy ewes and wethers, \$6 to \$7; spring lambs, \$7 to \$8; heavy lambs, \$8 to \$9.

Hogs. Receipts not being large enough to supply the demand prices were again firmer. Selects fed and watered sold at \$9 to \$9.10; good, \$8.50 to \$8.75; fair, \$8.25 to \$8.50.

Representative Purchases. Geo. Rowntree bought 10