

# Miners Wanted

TO CHEW

# PAY ROLL

Plug Tobacco

# WANTED.

At the several collieries of the Dominion coal co. Limited, skilled coal miners and mine laborers.

Apply on the works Or by letter

Dominion Coal Company, Ltd

*Genuine Garlock Packings*

FOR ALL PURPOSES.

**Pipe and Boiler Coverings,  
ENGINEERS SUPPLIES.**

also

"Tauril" High Pressure Jointing  
the Best Sheet Packing yet  
Produced.

**THE GARLOCK PACKING CO.**  
HAMILTON, ONTARIO.

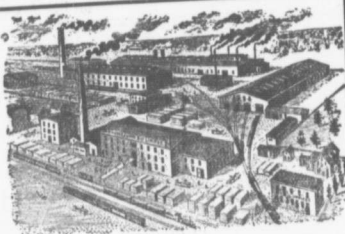
Used by Collieries in Lancashire, Staffordshire  
& Yorkshire

**'XTERRA'**

COLLIERY LAMP OIL.

For Marsault, Muselle Deflector or Closed Lamp

PURE WHITE FLAME  
**E. WOLASTON, Dutton St MANCHESTER**  
Sole Representatives for Canada, AUSTEN BROS,  
Halifax, N. S.



MANUFACTURERS OF—  
**CARS,**  
RAILWAY STREET and MINING  
Church Pews, Church Pews,  
FORGINGS & Fittings for Stores, Schools, &c  
CASTINGS A SPECIALTY  
Large Stocks of Foreign and Domestic Lumber on Sale.  
BUILDING MATERIALS  
GENERAL  
**Rhodes,**  
**Curry & co., Ltd.**  
Branch ROBIE STREET,  
HALIFAX, N. S. AMHERST, N. S.

## INTERCOLONIAL RAILWAY

On and after SUNDAY, OCT. 13 1907 trains  
run daily, Sunday excepted, as follows:—

### —TRAINS LEAVE STELLARTON—

No 144 Mixed for Hopewell	5.55
No 79 Mixed for Trenton	6.00
No 79 Mixed for Hopewell	6.05
18 Express for Halifax, and St. John	7.40
21 Mixed for Pictou Landing	7.40
62 Mixed for Pictou	7.45
62 Mixed for Mulgrave	8.30
19 Express for Sydney	11.15
78 Mixed for Pictou	11.15
56 Mixed for Truro	12.35
129 Mixed for New Glasgow	12.55
83 Express for the Sydney	13.30
83 Express for Halifax and Montreal	13.35
140 Mixed for Pictou	16.45
181 Mixed for Pictou Landing	16.10
22 Mixed for No. 100	16.50
65 Mixed for New Glasgow	18.50
88 Express for Halifax and St. John	21.50
17 Express for New Glasgow	21.55
66 Express for Pictou	21.55

### —TRAINS ARRIVE AT STELLARTON

79 Mixed from Hopewell	6.20
79 Mixed from Trenton	6.55
61 Express from Pictou	7.30
18 Express from New Glasgow	7.35
21 Mixed from Hopewell	7.55
56 Mixed from Truro	10.55
25 Mixed from New Glasgow	10.55
62 Mixed from Pictou	13.35
62 Mixed from Mulgrave	13.00
129 Mixed from Pictou	16.15
19 Express from Halifax and St. John	16.40
83 Express from Halifax and St. John	18.30
22 Mixed from Sydney	18.10
77 Mixed from Hopewell	18.45
88 Express from Pictou	19.45
83 Express from the Sydney	21.40
66 Express from New Glasgow	21.40
17 Express from St. John and Halifax	21.40

Trains are run by Atlantic Canadian Railway Company  
O'clock is mid-night. Monday, N. B. OCT 15th. 1907

Buffet sleeping cars on trains 82 and 86 between Halifax and Sydney. Dining cars between Halifax and Mulgrave, and Sydney. Dining cars between Mulgrave and South River.