

Constant Value - Giving is Our Creed at the Royal Stores

To many women, New Fashions mean prohibitive prices; but at The Royal Stores they find no such stumbling block. This Store is always bright and compact, and to the economical it offers, every week, wonderful opportunities of buying their personal or household needs with the minimum of trouble and expense.

YOU'LL FIND TYPICAL FRIDAY AND SATURDAY BARGAINS ON THIS PAGE.

Dainty Silks

36 in. Shantung, in natural shades; smooth even finish. Regular \$1.20 yard **\$1.05**
36 in. Duchesse, beautiful shot effects in Black and Gold, Purple and Gold and Saxe and Gold. Regular \$5.95 yard **\$5.20**

Black Astrachan Coatings

48 inches wide; guaranteed fast dyes. Regular \$10.50 yard. Friday and Saturday **\$9.35**
Regular \$12.50 yard. Friday & Saturday **\$11.00**
Regular \$16.50 yard. Friday & Saturday **\$14.85**

New Flouncing Embroideries

250 yards fine White Cambric Embroideries, Swiss manufacture.
12 inches wide. Reg. 85c. yard. **72c.** Friday and Saturday.
35 inches wide. Reg. \$1.50 yard. **\$1.25** Friday and Saturday.

Reduced Prices on Winter Hosiery for Women & Children

Women's Cashmere Hose.

Black and Heather mixtures; sizes SW, W and OS; guaranteed fast colors.
Black. Reg. \$2.20 pr. **\$1.89**
Saxe. Reg. \$1.70 pr. **\$1.48**
pair. Sale Price.

Children's Worsted Hose.

Two Steeples Brand; fast Black. Sizes 2 and 3. Reg. **\$1.45**
\$1.70 pair for
Sizes 4 and 5. Reg. **\$1.75**
\$2.10 pair for
Sizes 6 to 8. Reg. **\$2.20**
\$2.65 pair for

New Numbers in Women's Spats, Slippers and Boots

WOMEN'S SPATS—In high grade felt; colors of Fawn, Brown, Slate, Castor and Black; sizes 3 to 7; bound bottoms.
12 button. Reg. \$2.65 pair. Sale Price **\$2.36**
14 button. Reg. \$3.25 pair. Sale Price **\$2.85**
WOMEN'S LACED BOOTS—Black Gun Metal; medium toe and heel; sizes 3 to 7. Reg. \$8.60 pair for **\$7.75**
WOMEN'S BEDROOM SLIPPERS—In Rose Felt; soft Elk sole. Reg. \$2.80 pair for **\$2.52**

Delightful New Styles in Separate Skirts

NAVY SERGE SKIRTS—In smart new style effects; sizes 36 to 40 length, 24 to 26 inch at waist; smart, pockets trimmed with buttons; high waist effect. Reg. \$9.75 each **\$8.80**
BLACK SERGE SKIRTS—High waisted garments with narrow belt, material of fine soft make; the pockets are nicely trimmed with large or small bone buttons; all sizes. Reg. \$10.50 each for **\$9.25**

Women's Health Protecting UNDERWEAR

WOMEN'S PYJAMAS—Striped Flette in assorted colors; 2 piece suits. Reg. \$3.75 **\$3.35**
suit for
CORSET COVERS—Fine Jersey ribbed, in Cream, lace trimmed, long and short sleeves. Reg. \$2.00 each for **\$1.75**
COMBINATIONS—Fleece lined; sizes 42 to 44, ankle length legs. Reg. \$2.20 each for **\$1.95**

Stamped Linens, Pretty Designs

A brand new stock of popular Stamped Linen Pieces for Embroidering has arrived. This week we offer the following:
HTCK TOWELS—Size 16 x 26; pure White Linen, dull finish. Regular 70c. each **59c.**
BUREAU SCARFS—Soft White Linen; size 18 x 45. Regular \$1.30 each **\$1.05**
for
Hot Rools, Tinted Centres, Dollies, Child's Hats, Infants' Polkas and Combing
Sacques. Regular 25c. each for **20c.**

Special Offers on Tweeds and Coatings

TWEEDS—New English Costume Tweeds, 56 inches wide; plain and checked patterns: Fawns, Browns, Sand and Grey mixtures. Regular \$6.00 and \$6.25 yard **\$5.35**

COATINGS—56 in. All Wool Coatings in a variety of useful colors; plain and checked patterns. Regular \$6.00 and **\$5.20**
\$6.25 yard for

PATENT LEATHER BELTS—In colors of Sky, Red, Brown, Navy, Black and White; 36 inches long, 1 inch wide; neat nickel buckle. Regular 50c. each for **40c.**

HOSE SUPPORTERS—Pad and belt to go around waist; shades of Pink, Blue, Black and White. Regular 40c. each **35c.**

Men's Underwear

In your own interests buy your Underwear needs here as soon as possible. Don't put it off in the hope that present prices will come down. For Friday and Saturday we offer a fine line of All Wool Underwear, heavy ribbed Pants and Vests, well cut and finished; in all sizes. Special, per garment... **\$4.30**

Ladies' Job Gloves

2.50 Values for **\$1.35**



8 dozen pairs washable Suede Gloves; sizes 6 to 7½; in colors Grey, Fawn, Champagne, Brown, Black and White; 2 domes.

Men's Gloves.

10 dozen pairs Brown Suede Gloves; sizes 7 to 9; silk lined to finger tips; dressy, well finished. Regular \$4.00 pair **\$3.40** for

SMALLWARES

Military Hair Brushes, black or white bristles. Reg. 20c. each for **17c.**
Solid Back Nail Brushes, good bristles. Reg. 20c. each for **16c.**
Colgate's Mechanic Soap Paste. Reg. 35c. tin for **31c.**
Royal Vinolia Talcum Powder, extra large. Reg. 55c. tin for **49c.**
Celluloid Rattles, asstd. figures. Reg. \$1.00 each for **75c.**
Post Office Money Banks. Reg. 9c. ea. for **7c.**
Steel Cash Boxes, fitted with lock and key. 3 inch size. Special, each **25c.**
4 inch size. Special, each **29c.**
5 inch size. Special, each **34c.**
6 inch size. Special, each **39c.**
Tin Hat Boxes, oak stained. 16 inch size. Special, each **\$3.50**
18 inch size. Special, each **\$4.20**
20 inch size. Special, each **\$4.90**
Button Hooks, White Ivory. Reg. 20c. each for **18c.**
Spectacle Cases, Black Leatherette. Reg. 15c. each for **13c.**
Fripp's Toilet Soap, all perfumes. Special, per cake **14c.**
Vaseline, Blue Seal Brand. Reg. 12c. bottle for **10c.**
Kora Koma—Healing powder for eczema and other skin diseases. Special, per packet **49c.**

Fall Millinery in Endless Variety

Special Offers in Ready-to-Wear Hats



Velour and Velvet

for Street and General Wear.
—Pause a moment and consider the splendid appearance and suitability of these Hats for immediate wearing.
—You will find them in close fitting and floppy sailor styles.
—Colors: Saxe, Purple, Green and Black.
—Values up to \$8.50 each.

Selling for

\$6.00



Wool Sports' Coats.

In Navy, Saxe and Emerald; sizes 36 to 42; collarless. Regular \$5.50 each for **\$4.99**

Wool Pullovers.

In Saxe, Rose, Fawn, Emerald and Nile shades; sizes 36 to 42; sleeveless. Reg. \$5.00 **\$4.40** each for

SILK AND MUSLIN COLLARS—Pretty new styles in Pink, Hello, Champagne and White; lace trimmed. Regular 45c. each for **38c.**

TINSEL GIRDLES—For Evening Dresses, etc.; 70 inches wide, tassel ends. Reg. **\$2.90** each for

FUR STOLE—Brown, Mink, Marmot; size 62 x 9; shaped neck, head and tails. Reg. \$12.50 each for **\$10.00**

Jap Silk Blouses.

Shades of Saxe, Rose, Fawn and Champagne; neat rolled collars, embroidered fronts. sizes 36 to 42. Reg. \$7.00 each for **\$5.75**

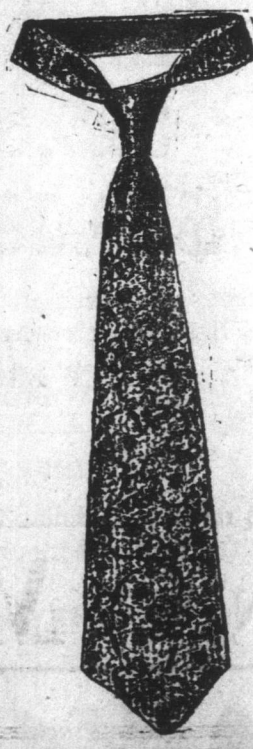
Flannel Blouses.

For Children and Misses; Middy Blouses in script flannel, assorted sizes, superior quality, make and finish. Regular \$9.50 each for **\$7.85**

WOMEN'S RAIN COATS—Fawn rubberized cloth with large Navy convertible collar; sizes 48 to 54. Regular \$15.50 **\$13.75** each for

DRESSING GOWNS—Fancy Flannellette designs; with V shaped necks and sailor collars, faced with satin of contrasting shades. Reg. \$5.40 each for **\$4.65**

The Right Place to Buy Men's Furnishings --- The Royal Stores.



Men's Ties.

5 dozen English Knit Ties; all pure Silk, in a wide range of colorings. Reg. **\$1.90**

\$2.25 each for

10 dozen Wide End Ties in pure Silks and Satins, Broche, Diagonal Stripes and other designs in latest colorings. Reg. \$2.00 ea for **\$1.68**

Men's Hats.

6 dozen Soft Felt Hats of superior make; colors of Black, Brown, Sage, etc.; wide or narrow brims, Faint ribbon bands. Sizes from 6¾ to 7¾. Reg. \$6.50 each for **\$5.55**

7 dozen Soft Felt Hats in all the newest shades; smooth velvety finish, lined with shaded silk; wide semi-roll rim. Reg. \$14.00 each for **\$12.15**

4 dozen Scotch Tweed Caps, in mixed colorings, light and dark shades, lined with quilted silk; one piece crowns; sizes 6¾ to 7¾. Reg. **\$4.95** each for

TRENCH COATS. and Waterproofs, with and without belts; all selling at reduced prices. Prices from **\$13.10 to \$50.00**

Men's Socks.

15 dozen pairs all Wool Socks, medium and heavy weights; sizes 10 to 11 inches; extra special values; soft finish. Regular \$1.80 **\$1.50** pair for

150 dozen pairs Grey Wool Socks in medium weights; sizes 10 to 11 inches. Reg. \$1.20 pair for **\$1.06**

Men's Scarfs.

5 dozen only artificial Silk Scarves, fine knit in colors of Brown, Black and White; large size, fringed ends. Reg. \$3.75 each for **\$3.45**

7 dozen Pure Silk Scarves, White with colored bar stripes on ends, heavy fringe; large sizes. Reg. \$6.00 each for **\$5.50**

Men's Pullovers.

Heavy Pullover Sweaters in Grey only; sizes 36 to 42; fitted with roll collar. The right garment for cool weather. Regular \$2.60 each for **\$2.40**

Youths' Jerseys.

Dark Brown Jerseys with low collars; sizes 20 and 32 only. Reg. \$1.90 **\$1.68** each for

Low Prices on Household Needs

Table Covers.

Cream Cotton Poplin, oval; size 11 x 16; colored embroidery, silk fringe finish. Reg. \$1.25 each for **\$1.05**

Cushion Covers.

Cream Madras; size 19 x 19; frilled; assorted colors; Reg. 95c. each for **83c.**

Brush and Comb Bags.

White Cotton; size 9 x 12; lace and insertion trimmed; taped tops. Reg. 90c. **79c.** each for

Cushion Tops.

Tapestry; beautiful designs, scenery, &c.; size 18 x 18. Reg. 90c. each for **80c.**

Tea Cloths.

White Linen and Cotton; size 32 x 32; hem-stitched and embroidered. Reg. \$1.50 **\$1.30** each for

Sideboard Cloths.

Brown Crash Linen; size 14 x 54; pretty colored embroidery designs and hem-stitched borders. Reg. \$1.25 ea. for **\$1.10**

Casement Cloth.

48 inches wide in shades of Drab, Green, Cardinal, V. Rose, Saxe, Cream and White; fine even finish. Regular \$1.50 yard for **\$1.35**

Madras Muslins.

50 inch all White Madras with beautiful new floral designs. Reg. \$1.50 yard for **\$1.30**

Congoleum Squares.

6 dozen new patterns, size of Squares 6 x 9; assorted colorings. Reg. \$10.00 ea. **\$9.25** for

LINEN COLLARS

Arrow Brand.

This popular make of Collar is noted for splendid finish and hard wearing quality. We have a tremendous stock of the latest new shapes—20 different styles—in all sizes from 14 to 16½. Special Sale Price

3 for 99c

Fine Grocery Offers

To avail yourself of these fine Grocery offers is to practice economy of the most satisfactory kind.



Libby's Cherries. Reg. 85c. tin for **78c.**
Sliced Pineapple. Reg. 50c. tin for **45c.**
Tomatoes. Reg. 30c. tin for **25c.**
Salmon. Reg. 10c. tin for **8c.**
Cadbury's Cocoa. Reg. 55c. tin for **49c.**
Strawberry Jam. Reg. 75c. bottle for **68c.**
Staple & Strong's Pickles. Reg. 45c. btl. for **42c.**
H. P. Sauce. Reg. 55c. btl. for **50c.**
Custard Powder. Reg. 20c. pkt. for **17c.**
Loose Tea. Reg. 65c. pkt. for **58c.**

Bell Island Poultry Show

The first exhibition of poultry and vegetables under the recently organized Bell Island Poultry Association, was formally opened yesterday. The Hon. Dr. Campbell, Minister of Agriculture and Mines, with representatives from the Nfld. Poultry Association, consisting of Judge Walter Reid, who was officially appointed to award the prizes, and Messrs John Duff, Harry McNeill, Secretary Calver, Vice-President Stanley White and G. R. Williams. Accompanying Hon. Dr. Campbell was Secretary A. J. Bayly, of the Board of Agriculture and Mines, F. P. LeGrow and Reid. The exhibition was held in the Orange Hall, Wabana, both flats being used. The poultry being on the ground floor and upstairs was used for the vegetables, artwork work, photographs, school competitions, business men's exhibits. The attendance was good, over 320 adults visiting the show for the opening day. The exhibition will close on Friday night at 8 p.m., when the ribbons and prizes will be awarded. The exhibition is a thorough success from every standpoint. The poultry are all in standard wire coops, loaned by the St. John's Association. The quality of birds is good. The better classes are Black Minorcas, owned by Mr. Sam Godden, Rhode Island Reds, White Pekin Ducks, Brown Leghorns, owned by Mr. Angus McDonald, Bronze Turkeys owned by Mr. J. J. Hooke, and Toulouse Geese, which we believe would win ribbons in the larger show in St. John's. A new feature was the exhibition of a miniature model poultry house, feed hopper, and trap nests.

Upstairs the room was a picture. The vegetables were varied and some of the best we have ever seen, proving that Bell Island is still able, if its citizens wish, to produce as good crops as the farmers there did a generation ago. Bell Island butter has been always famous, and the sample shown by Mrs. Petrie is well up to the standard. The judging of the vegetable exhibits on the upper flat was done by Secretary J. T. Lawton, Stanley White, Otto Rusch, whilst the artwork work was judged by Mrs. Dr. Giovannetti, Mrs. Dr. Lynch, Mrs. Dr. Carnahan and Stanley White. The display of photographs of Bell Island, scenery by Miss Marion Godden, G. A. Harvey, the work of geometrical problems, typewriting, etc., by school pupils of the island—the woolen rugs, etc., by Mrs. Aggie Whelan, Mrs. Charles Feaver, Mrs. Peter Murphy, Mrs. Denbly and the fine lace done by Mrs. Dicks, a lady of 84 years, was as good as could be produced in any part of the world. Nurse Ledrew's fancy work was also of the highest class, as well as the wadded quilt of Mrs. J. K. Butler. The bed spreads shown by Mrs. J. H. Bennett (prize-winner), was something seldom seen. Miss Clara Godden and Mrs. F. F. Jardine's work also was a prominent feature. Cabbage prizes were won by Mr. Ben Searle, Will Bennett, and J. B. Petrie. Turnips by Wm. Bennett and Mrs. A. Bennett. Potatoes, Carrots, Parsnips, Beet, Vegetable Marrows, Housewives bread, Jam, Pickles, were also shown, and the official prize list will be forwarded by Mr. Secretary Lawton and published later. The exhibition of Aladdin Lamps, by the New York Import Co., the stalls of the business men were also neatly arranged, including Rexall drugs, Imperial Life Insurance Co. were quite an attraction. At 8 o'clock the exhibition was formally declared open by Hon. Dr. Campbell, Minister of Agriculture and Mines, in a very fine speech of congratulation to the exhibitors. Mr. Geo. R. Williams spoke on the poultry exhibits as well as Judge Reid, Treasurer, W. R. Butler of the Newfoundland Poultry Association and their remarks had an enthusiastic reception. Next year the Exhibition Committee will have to find two buildings for their show which will be an annual affair. After the official ceremony the Bell Island Club entertained Hon. Dr. Campbell and visiting city folk to a luncheon in the Masconic Club. Toasts to Hon. Dr. Campbell, guests of the evening, etc., followed and the time went all too quickly. The party was motored to the pier where a special trip of the Euphrates brought them to the Cove at 11 p.m. The city visitors speak highly of the courteous treatment of their hosts. Everybody felt that at last a good start had been made towards pure-bred poultry and the advance of agriculture for the Iron Island. The Committee in charge of the Exhibition consists of Mr. J. A. Hughes, President; J. B. Gillatt, Vice President; R. Proudfoot, Treasurer; J. T. Lawton, Secretary; and the following Committee:—Dr. Carnahan, F.F., Jardine, J.P., M. J. McNeill, and Mr. S. G. Sirotna who deserve the thanks of the community, as well as Mr. Angus McDonald, Manager of the Dominion Iron and Steel Co., who has been indefatigable in influencing the organization into concrete shape. Congratulations to Bell Islanders on their show.—Q.

Parties desiring to reserve tables at the Blue Puttee may do so any time during the day, and if a special after-theatre supper is desired (Chicken, Partridge, Oysters, etc.), we will serve it by getting a few hours' notice.—oct25,61