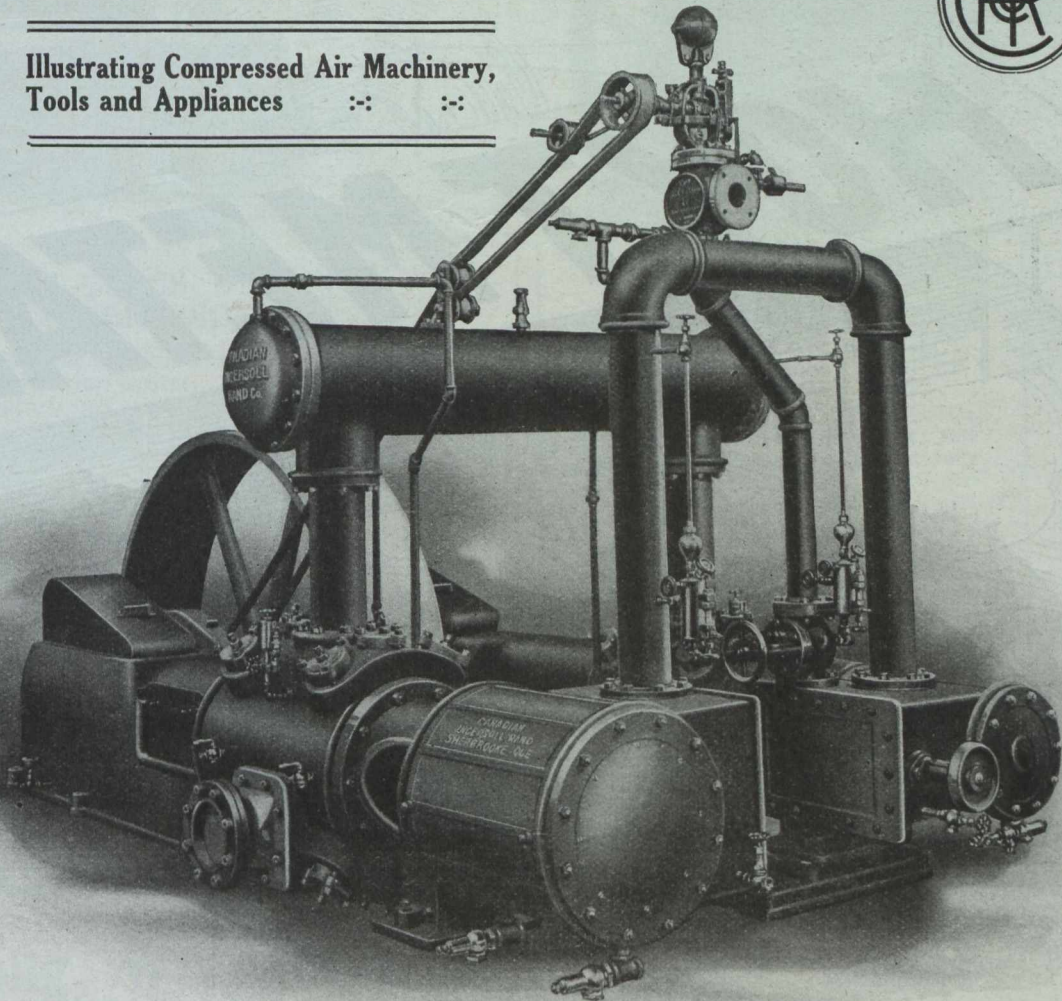




THE CIRCO PAGE



Illustrating Compressed Air Machinery,
Tools and Appliances :: ::



Class "RL-3" Duplex Type, Steam Driven Air Compressor, with Cross Compound Steam and Cross Compound Air Cylinders with Intercooler. Machine is convertible to Belt Drive when required, and is equipped with Speed and Pressure Governor, "Circo" Silent Leaf Inlet and Outlet Valves, Enclosed Dust-Proof Construction, Splash Lubrication System and Meyer Adjustable Cut-off.

Features Which Mean Economy :

OVER-ALL ECONOMY OF POWER: The "Circo" silent Leaf Valves secure efficiency in the intake and output of air and reduce valve maintenance to a minimum.

The adjustable steam valve gear enables the steam consumption to be graded to suit the steam pressure and the load, resulting in economy closely approaching that of the releasing type of valve gear.

The liberal water jacketing and ample inter-cooler surface provided also contribute largely to the sum total of economical production of com-

pressed air by this type of machine.

CONVERTIBILITY: This machine may be readily converted to belt drive at any time by simply disconnecting the steam pistons and steam valve gear.

LUBRICATION: The flood system of lubrication adopted reduces the mechanical friction losses to a minimum, and the delivery of oil is at all times proportioned to the speed of the machine.

CLEANLINESS: The enclosed construction makes the machine perfectly dust-proof and prevents the escape of oil.

We have many compressors of various types and sizes under construction at all times, and good deliveries can usually be made. Write our nearest branch, stating your requirements.

Canadian Ingersoll-Rand Company Limited

General Offices: 31 Commercial Union Building,
MONTREAL, CANADA

Branch Offices: Sydney, Cobalt, Toronto, Timmins, Winnipeg, Nelson, Vancouver