

Issued Each Week—only One Dollar a Year

VOL. XXVIII

NUMBER 51

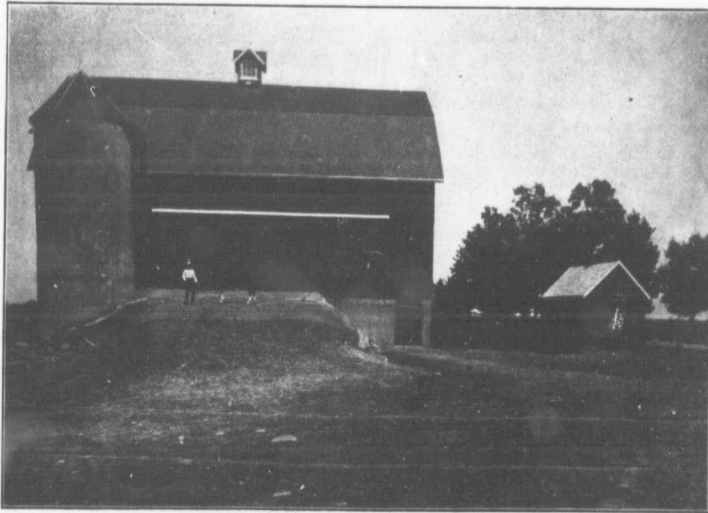
FARM AND DAIRY

RURAL HOME

PETERBORO, ONT.

DECEMBER 23,

1909



A NEAT WELL-KEPT LOT OF FARM BUILDINGS IN PRINCE EDWARD CO., ONT.

One would need to travel far to find a more progressive farming centre than is situated in Prince Edward County, especially in the vicinity of Bloomfield. Dairying is generally practised. Some exceptionally fine dairy herds have been developed there, and many others are embarked on the high road of dairy improvement which most surely must lead to success. Everywhere the farmers of Prince Edward are wide awake, eager for information, and seek to make the best of their opportunities. The barn illustrated is on Mr. E. P. Stanton's farm, located in the Bloomfield district.

DEVOTED TO
BETTER FARMING AND
CANADIAN COUNTRY LIFE