



Big Fortunes Are Being Made In Minnesota Iron Lands

Yes. Not only big fortunes but little ones. The smaller people are getting a "show" at the great profits. Farmers, merchants, and others who have money in the iron-bearing lands of Crow Wing County, Minnesota, are getting profits in cash that exceed their fondest hopes. These iron-bearing lands are money makers for those who take out ore. They are situated in the Cuyuna Iron Range which lies along the Northern Pacific Railroad between Ironwood and Brainerd.

Some Old Sections

Though \$1,500,000 in dividends were distributed this year to the stockholders of only one company in Northern Minnesota, still the indications are that the iron-ore in older sections is getting scarcer and scarcer every year. New mines will have to be opened in greater numbers than before in other sections.

Your Opportunity—Our Proposition

This then is your opportunity. Many consider it the chance of a lifetime. We control a quantity of iron-bearing land in Township 46, Range 20, Crow Wing County, Minnesota. It is but 3 1/2 miles from Deerwood, a town on the

Northern Pacific Railroad between Duluth and Brainerd.

A Rich Strike Nearby

A short distance North of this property a prominent ore company has sunk a shaft and is now mining. In every direction drills have disclosed valuable finds of iron ore. Within 80 rods of this land drills have blocked out forty million tons of iron ore. The above ore company referred to has offered to supply us with money and take half the profits. We prefer, however, to develop it ourselves and divide the profits among those who invest with us in this valuable land. Consequently, we believe it will be an excellent opportunity for you to receive good dividends on your investment.

We are an organized corporation, capital \$100,000. The price per share is \$100 each. Our prospectus and other literature give full description of the property with pictures, guarantees, references, map, and everything that it is possible to put on paper which reflects an honest, straight-forward and reliable investment.

As to these lands will we repay you. Send for above prospectus quick, and ask us any questions if you feel inclined to. We will give you an honest, straight-forward answer.

IRON PRODUCING LANDS CO.,
822 Bank of Commerce Bldg., Minneapolis, Minn.

Money of Pure Bred Stock

Premiums Offered by The Canadian Dairyman and Farming World

Many energetic persons during the past year have obtained one or more of the following premiums:

Do you not think that a little hustling on your part would well repay you?

Why not commence work now—to-day?

READ THIS OFFER CAREFULLY:

PURE BRED STOCK

We will give a setting of eggs, of any of the standard varieties of swine, for only two new subscribers.

A pure bred pig, of any of the standard breeds, from six to eight weeks old, with pedigree for registration, for only seven new subscribers, at one dollar a year.

A pure bred Ayrshire, or Jersey bull or heifer calf, with pedigree for registration, for only thirty new subscribers, at one dollar a year.

A pure-bred Holstein heifer calf for forty-five new subscribers.

CASH PRIZES

If you do not desire to take advantage of any of the foregoing offers, we will give the following cash prizes:

\$1,500 for only 1,000 new subscribers secured
Write to the Circulation Manager for Full Particulars

within a year from the time you start work, at only one dollar a year.

\$1,200 for 800 new subscribers.

\$1,000 for 700 new subscribers.

\$900 for 600 new subscribers.

\$700 for 400 new subscribers.

\$500 for 300 new subscribers.

\$300 for 200 new subscribers.

\$200 for 100 new subscribers.

\$100 for 50 new subscribers.

\$50 for 25 new subscribers.

All the subscriptions must be new and for one year at a dollar a year each. We positively guarantee to pay the prizes mentioned.

Smaller cash prizes are offered for smaller lists. If you are interested, write us for sample copies, and fuller particulars. Now, while circulation sales are numerous, is a splendid time to secure clubs of new subscribers. Remember that The Dairyman and Farming World is the only purely farm paper in Canada published weekly for one dollar a year.

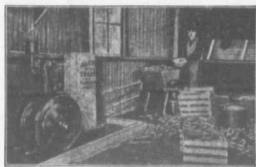
Write to the Circulation Manager for Full Particulars

The Dairyman and Farming World
PETERBORO, ONT.

EVERY FARMER NEEDS

A
FAIRBANKS-MORSE

JACK-OF-ALL-TRADES ENGINE



They will Pump Water, Thresh, Grind Feed, Turn Separator, Churn, and make life easier.

OUR CATALOGUE WILL TELL YOU all about this Labor saver. Sent Free.

FAIRBANKS' STANDARD SCALES

The Canadian Fairbanks Co.

LIMITED

Montreal, Toronto, St. John, Winnipeg, Calgary, Vancouver

I.H.C. BINDER TWINE

1 LB. ——— 1 LB.



STANDS EVERY TEST

IT HAS FULL LENGTH, FULL STRENGTH AND EVENNESS OF STRAND

It may be that you are one of the 500 feet of good, serviceable twine, and that is what he will get if he buys International twine. Farmers receive full value when they buy International twine.

International Harvester Company twine is guaranteed to be full length and full strength. Every Canadian farmer who used this twine last season knows that every pound complied with the government's inspection requirements.

While it is true that "a pound is a pound of weight around," it doesn't logically follow that the average length of a pound of sisal twine measures 500 feet. It should, and the farmer who uses a pound

Bear in mind that the brands of Deering, McCormick and International twine are guaranteed to average as follows:

Sisal,	500 feet per pound
Standard,	500 " " "
Manila,	600 " " "
Pure Manila,	650 " " "

Call on the local agent and have a talk with him concerning these brands of twine or write nearest branch house for further information and the farmer who uses a pound

CANADIAN BRANCH HOUSES:

Calgary, Alta., Hamilton, Ont., London, Ont., Montreal, Que., Ottawa, Ont., Regina, Sask., St. John, N. B., Winnipeg, Man.

INTERNATIONAL HARVESTER COMPANY OF AMERICA
(INCORPORATED)
CHICAGO, U. S. A.