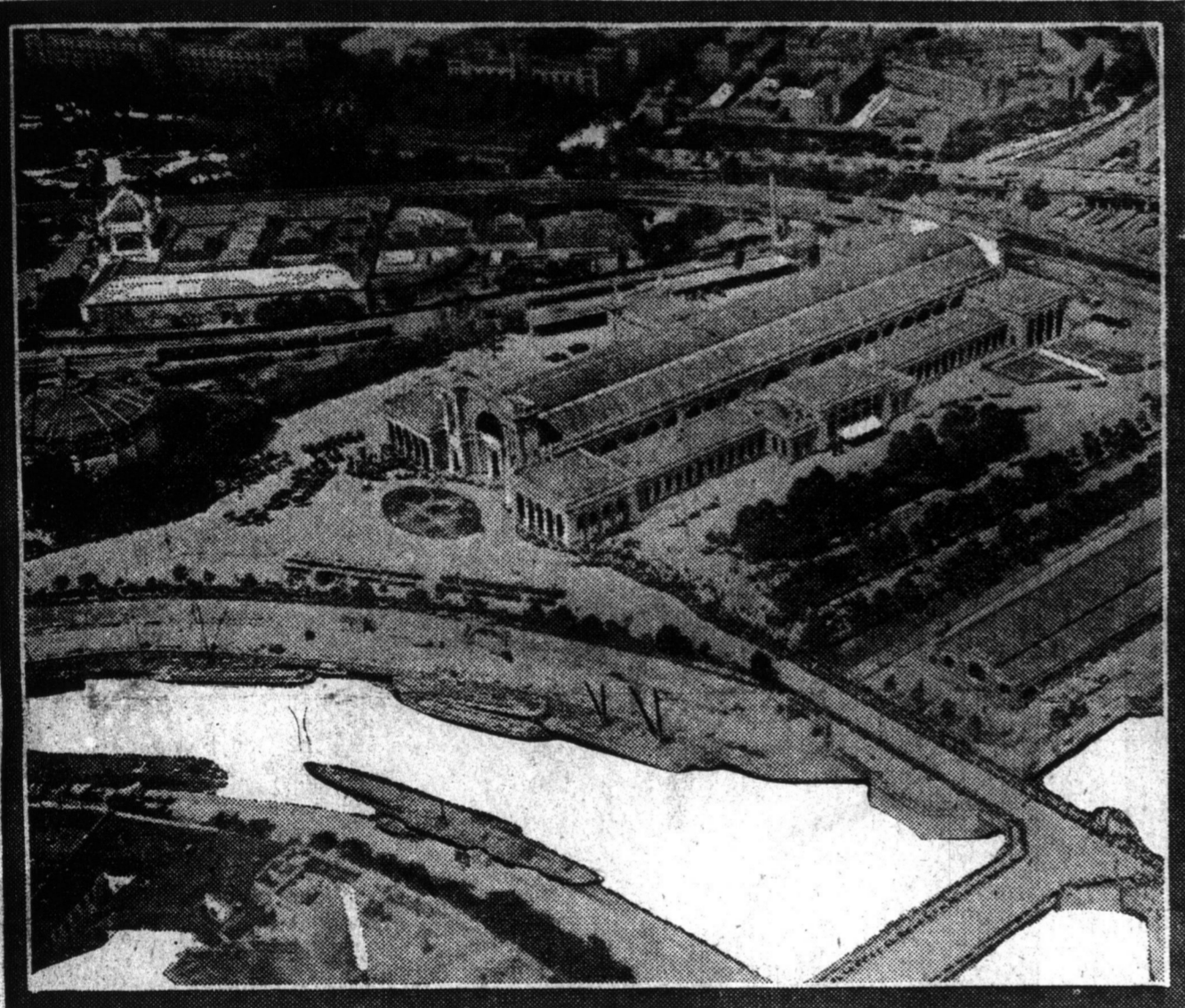


Turkish troops at Constantinople, all ready for action, and Turkish warships speeding for the Black Sea.



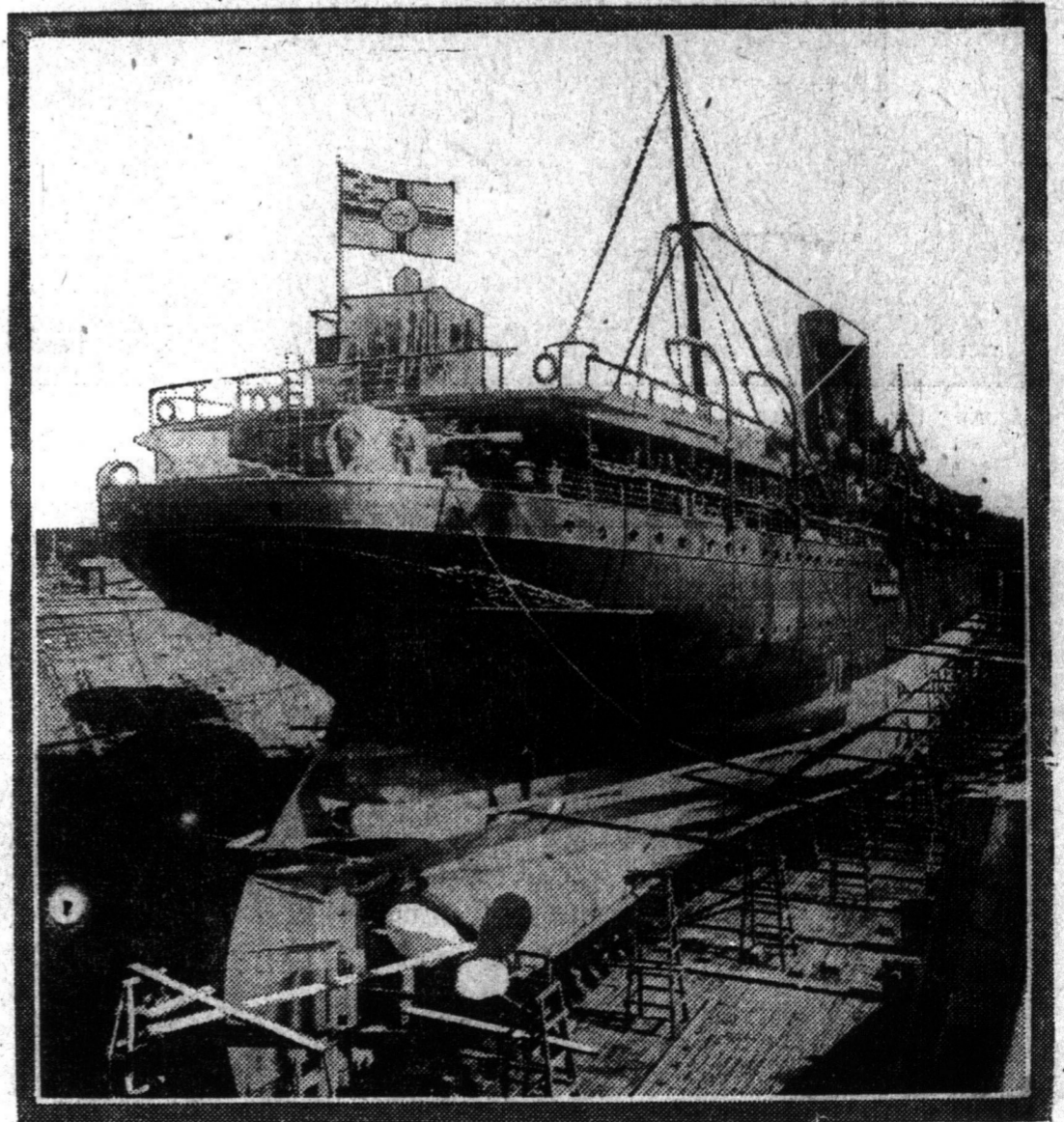
This Zeppelin view of Berlin shows in the foreground the River Spree spanned by the Alein Bridge and crowded with long barges and steam barges. The Lehrte station, one of the five terminal stations of Berlin, is seen in the centre of the picture with railway lines leading into it from the top right hand corner of the view. To the left of the station are the German Colonial Museum, a small, round building near the river, and the Exhibition Park, further away from the river. Behind the Exhibition Park may be seen the square barracks of the Uhlans of the Guard, with the parade ground immediately behind them.



Russian soldiers are the greatest card players in the world—It is their amusement in the trenches and in billets—The Russian soldier is said to be stolid and a ponderous thinker, but some of his games are very intricate.



Full military honors marked the funeral of Capt. Erdman of the German cruiser Bleucher, who was rescued after the sea battle only to die of pneumonia in Edinburgh Military Hospital.



And here she'll likely stay—The Prinz Eitel Frederick in drydock at Newport News, Va., where repairs are being made—The picture shows two of her guns—British cruisers wait outside the harbor.