

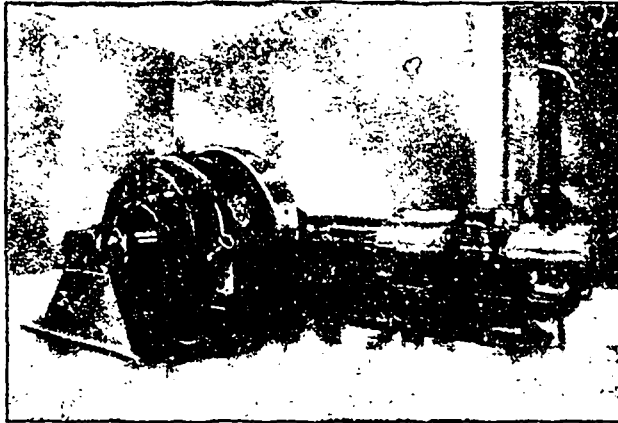
# IDEAL HIGH SPEED ENGINES

PERFECTION IN HIGH SPEED ENGINE DESIGN, NOISELESS RUNNING,

PERFECT LUBRICATION

ACCESSIBILITY

ECONOMY



ASK FOR BULLETIN No. 6

QUOTATIONS CHEERFULLY GIVEN

**THE GOLDIE & McCULLOCH CO., LIMITED**  
GALT ———— ONTARIO ———— CANADA

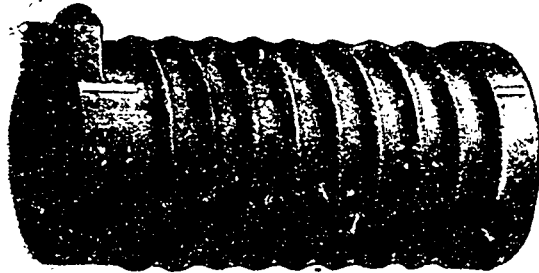
WE MAKE Wheelock Engines, Corliss Engines, Ideal Engines, Boilers, Pumps, Flour Mill Machinery, Oat Meal Mill Machinery, Oat Meal Steam Pan Kilns, Wood Working Machinery, Iron Pulleys, Wood Rim Split Pulleys, Shafting, Hangers, Gearing, Friction Clutch Pulleys, Friction Clutch Couplings, etc., Safes, Vaults and Vault Doors. Write for Catalogue.

Western Branch: 248 McDermott Ave., Winnipeg, Man.

Quebec Agents: ROSS & GREIG, Montreal, Que.

# MORISON Suspension Furnaces

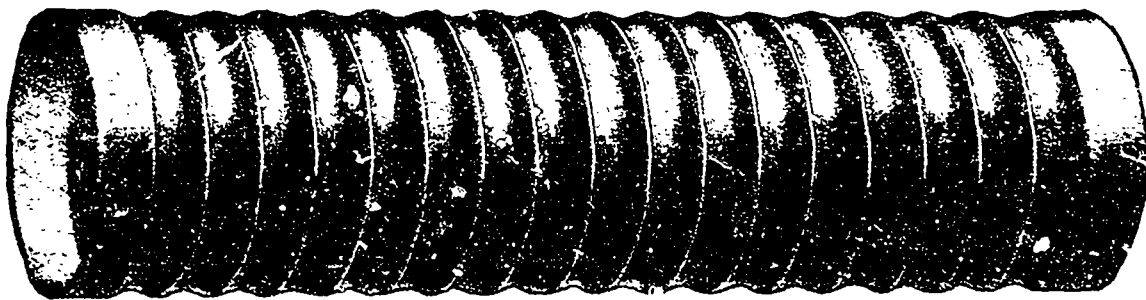
For Land and Marine Boilers



With Plain Ends or Flanged to any required shape.

Uniform Thickness, Easily Cleaned, Unexcelled for Strength, Unsurpassed for Steaming Capacity.

*The universally satisfactory record of "THE MORISON" proclaims it the best furnace made.*



MANUFACTURED BY

**THE CONTINENTAL IRON WORKS,** WEST AND CALVER STS., BOROUGH OF BROOKLYN, New York  
Near 10th and 23rd Street Ferries.

Sole Canadian Agent—MR. GEORGE HOLLAND, M. C. Soc. C. E., P. O. Box 529, MONTREAL