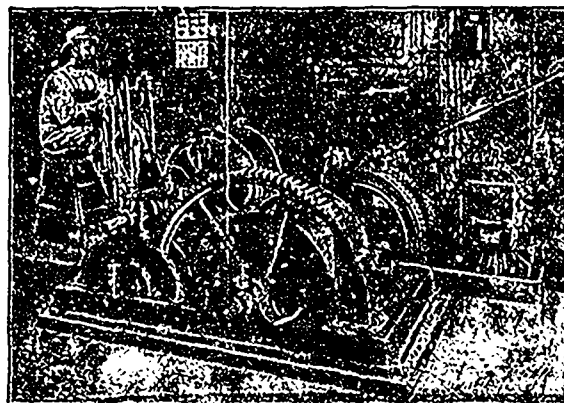


Westinghouse Motors

For Alternating and Direct Current Service

Hoists, Compressors, Pumps and other mining apparatus, when driven by Westinghouse Motors, show in the point of attendance alone, a marked economy as compared with mechanical drive.



Westinghouse Induction Motor Driving a Mine Hoist.

Write for Circulars 1042 and 1050.

Ahearn & Soper, Limited

Ottawa, Canada.

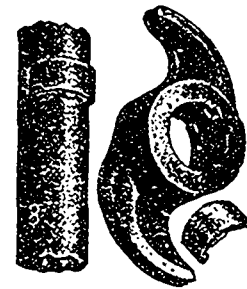
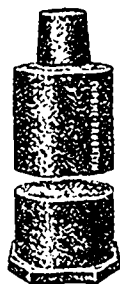
ADAMANTINE SHOES & DIES ALSO CHROME CAST STEEL.

THE CANADA PATENT SELF-LOCKING CAM

TAPPETS, BOSSES, ROLL SHELL and CRUSHER PLATES.

Also Rolled Parts for Huntington and other Mills.

These castings are extensively used in all the Mining States and Territories throughout the World. Guaranteed to prove better and cheaper than any others. Orders solicited subject to above conditions. When ordering send sketch with exact dimensions. Send for Illustrated Catalogue to



CHROME STEEL WORKS, BROOKLYN, N.Y., U.S.A.

KENT AVENUE, KEAP
AND HOOPER STREETS.

F. E. CANDA, President.

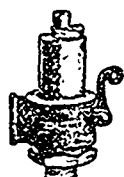
C. J. CANDA, Vice-President.

F. MORA CANDA, Secretary.

T. I. JONES, Treasurer.

THE LUNKENHEIMER POP SAFETY VALVES

for STATIONARY PORTABLE & MARINE
STEAM BOILERS



Brass,
Side Outlet.



Iron Body,
Flange End.



Brass,
Top Outlet.

Are made of the best materials, provided with large springs, have full relieving capacity and always prompt and reliable in operation. In brass top or angle outlet, $\frac{1}{4}$ inch to 3 inches; in iron, brass mounted, screw or flange ends, 2 inches to 6 inches. Also furnished with nickel seats, if desired. All valves rigidly tested and inspected and warranted to satisfy. Specify *Lunkenheimer* make and order from your dealer.

Write for catalogue of Superior Brass and Iron Engineering Appliances.

THE LUNKENHEIMER CO.
SOLE MAKERS AND PATENTERS.

Main Offices and Works,

CINCINNATI, OHIO, U. S. A.

Branches { New York: 26 Cortlandt St.
London: 35 Great Dover St.

C. L. BERGER & SONS

37 William Street
BOSTON, Mass.

SUCCESSORS TO
BUFF & BERGER
SPECIALTIES

Standard Instruments
and Appliances for
Mining, Subway,
Sewer, Tunnel,
and all kinds of
Underground Work

SEND FOR CATALOGUE