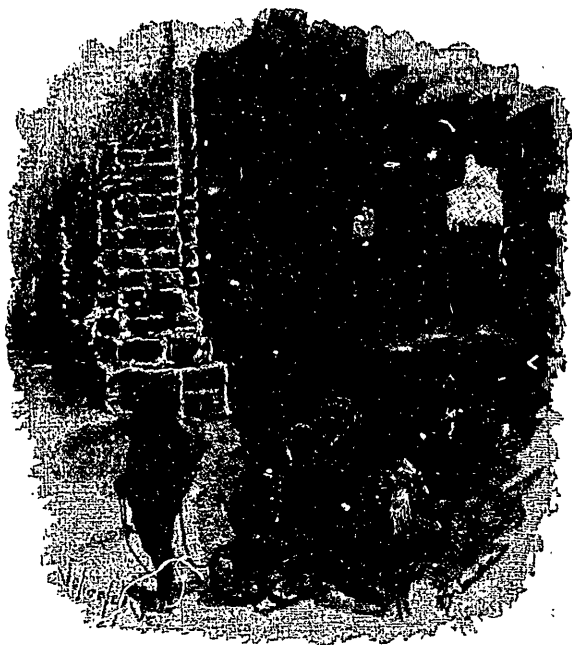


THE ICE PALACE AT MONTREAL.*



INSIDE THE ICE PALACE.

THE Montreal Ice Palace was the first ever tried in the New World. The building was made of blocks of ice, forty-two by twenty-four inches, each block weighing five hundred pounds, and the whole structure containing forty thousand cubic feet of ice. Its dimensions were about ninety by ninety feet, with rectangular towers at each corner, and a central square tower one hundred feet high. The blocks were "cemented" together by snow for mortar, and then water was pumped on from a hose, and the whole palace made into one solid piece, so that you couldn't separate one block from another without sawing them apart. The Ice

* We are indebted to the courtesy of Messrs. D. Lothrop & Co., Boston, for the cuts which accompany this article. They are specimens of the style of illustrations of their popular monthly for young people, which is announced in our advertising pages, and which is clubbed at greatly reduced rates with this MACAZINE. The letter-press is condensed from Dr. Beer's admirable paper on the Canadian Carnival. This description refers to the Ice Palace of 1883.