

## Tea! Tea! Tea!

Arrived at Headquarters:

"RAINBOW" TEA—  
Half Chests and 20-lb. Boxes."PRIMROSE" TEA—  
Half Chests and 20-lb. Boxes."VICTOR" TEA—  
Half Chests and 20-lb. Boxes.

GEORGE NEAL

(Limited.)

Gossages  
**Magical Soap.**

HARD WEARING.

Made by a Firm of World-wide Reputation  
for Excellence & Uniformity of Quality.

WILLIAM GOSSAGE &amp; SONS LTD., WIDNES.

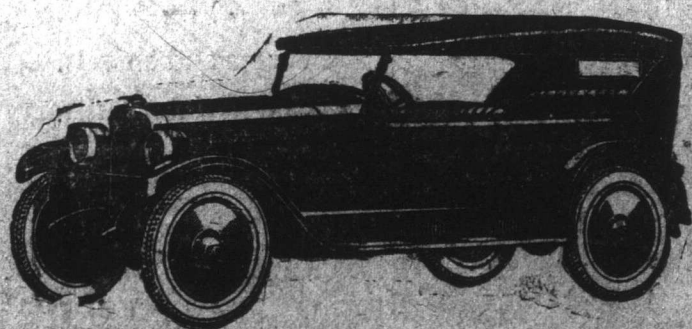
JOB'S STORES, Ltd.

Agents.

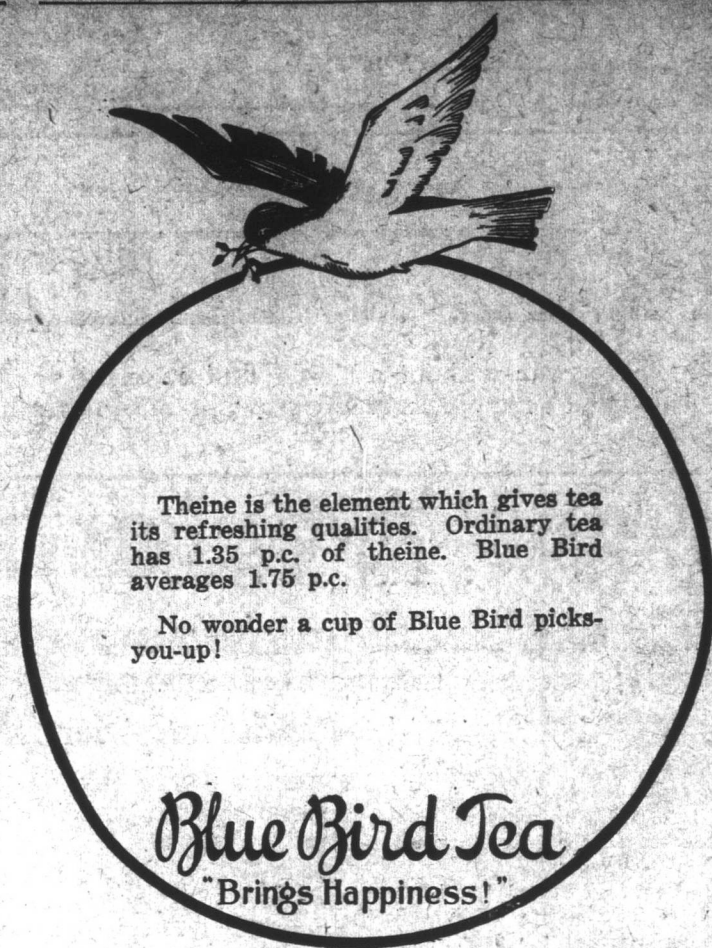
## New Series Chalmers Six

A Solid year of engineering effort by the new Chalmers organization has brought the New Series Chalmers Six to a remarkably high state of performance perfection.

At \$2300.00, and in the present market, the sound investment value of the Chalmers Six is strikingly plain.

All Models equipped with Disc  
Steel Wheels and Cord TiresMARSHALL'S GARAGE,  
WATER STREET WEST.

The CHALMERS SIX



Theine is the element which gives tea its refreshing qualities. Ordinary tea has 1.35 p.c. of theine. Blue Bird averages 1.75 p.c.

No wonder a cup of Blue Bird picks you up!

Blue Bird Tea  
"Brings Happiness"

## FOR SALE!

Herring Barrels, etc.

400 LOCAL HERRING BARRELS—28"

Long, 17" Head.

12 WOOD HOOPS.

Lowest Market Price.

Robert Templeton.

## The Fishermen's Friend.



RED BALL VAC STORM KING.  
RED BALL VAC KNEE RUBBERS.  
SEA RUBBERS STORM KING.  
SEA RUBBERS—Knee Length.  
SEA RUBBERS—the Rubber with the White Sole.  
\$5.50 the Pair.

Double wear in each pair.

Special prices for Case lots.

Mail orders receive prompt attention.

F. Smallwood

THE HOME OF GOOD SHOES,  
218 & 220 Water Street.

## NEW SHIPMENT!

We always carry fresh supplies of the following:—

Corona, Moirs', Fry's, Cadbury's, Rowntrees, Peters, Nestles, Savoy, Grey's, Laurel, Lorraine, Farley's Confectionery. Local and imported One Cent Goods.

P. F. FEARN & CO., Ltd.,  
Box 667, 200 Water St. Phone 734.

## Music for Schools!

ALL KINDS OF TUTOR, STUDIES and  
SCALE BOOKS.MUSICAL CATECHISMS and BOOKS ON  
THEORY.

TRINITY COLLEGE MUSIC.

THE FAMOUS CENTURY & MCKINLEY  
EDITIONS.

15c. a Copy—Get Catalogs.

Charles Hutton.

THE OLDEST MUSIC SHOP IN THE TRADE  
a.t.u.h.t.f.

## COAL!

Now Discharging Cargo of

BURNSIDE

\$13.50

You cannot get better Coal; all lumps,  
no slack.

## Anthracite Coal.

Now delivering Cargo Best Welsh Hard  
Coal.

The Best Anthracite in the world.

## SALT!

2000 Tons Best Cadiz Salt, delivered  
afloat.A. H. Murray & Co.,  
Limited., Beck's Cove.

aug24.eod.t.f.

## BON MARCHE

(Opp. Bowring Bros.) 268 Water Street.

We are opening our New Fall Goods every day, and the values are better than ever. Prices that make people talk about us everywhere.

Heavy Bed Ticking, per yard . . . . . 40c.  
36 inch Percale, per yard . . . . . 25c.  
Men's Police Braces, per pair . . . . . 40c.  
Men's Work Shirts (with collar), each . . . 85c.  
Men's Work Shirts (with collar), each . . . 89c.  
36 inch Cretonnes (splendid line), per yd. . 25c.  
36 inch Striped Flannelette, per yard . . 25c.  
Cotton Serge, in latest checks, per yard . 20c.

SEE OUR WINDOWS!

## BON MARCHE,

268 Water Street.

OPP. BOWRING BROS.

## Spare Time Study.

No matter if your schooling was limited—if you do have to work long hours. If you really want to be prepared when your chance comes, THE INTERNATIONAL CORRESPONDENCE SCHOOLS will prepare you in your spare time. Terms on application to

ARTHUR R. STANSFIELD, Representative,  
Box 1018, 178 Water Street, 1722 a.t.u.h.

## Reid-Newfoundland Co., Limited

## NOTICE!

Passengers leaving St. John's on Express Train 1 p.m. Thursday, September 28th, will connect with S.S. Portia at Humbermouth for usual ports of call—Humbermouth to Battle Harbor.

## Reid-Newfoundland Co., Limited

## Conception Bay Service!

## S.S. "PAWNEE"

CHANGE OF SCHEDULE EFFECTIVE MONDAY, AUG. 21-22  
AND UNTIL FURTHER NOTICE.LEAVES CARBONAR for Portugal Cove via Bell Island on  
Monday, Wednesday and Friday, at 7:30 a.m.LEAVES HARBOR GRACE for Portugal Cove via Bell Island on  
Tuesday, Thursday and Saturday, at 7:30 a.m.BELL ISLAND every morning, except Sunday, at 9  
a.m. for Portugal Cove.ARRIVES PORTUGAL COVE every morning, except Sunday, at  
9:15 a.m.Passengers connect at Portugal Cove with motor  
cars for St. John's.LEAVES BELL ISLAND every day, except Sunday, for Portu-  
gal Cove, at 2 p.m.LEAVES PORTUGAL COVE for Carbonar via Bell Island on  
Monday, Wednesday and Friday, at 4:30 p.m.PORTUGAL COVE for Harbor Grace via Bell Island  
on Tuesday, Thursday and Saturday, at 4:30 p.m.LEAVES PORTUGAL COVE every evening, except Sunday, for  
Bell Island, at 4:30 p.m.N.B.—Motor cars leave rear Post Office, St. John's, at 3:45  
p.m. every day, except Sunday, taking passengers to Cove for  
Bell Island, Carbonar (Mon., Wed., Fri.) and Harbor Grace  
(Tues., Thurs., Sat.)S.S. "Pawnee" leaves Portugal Cove every evening (except  
Sunday) for Carbonar and Harbor Grace, at 4:30 p.m.

BELL ISLAND S. S. CO., LTD.

GEO. NEAL, LTD., J. B. MARTIN,  
Agents, St. John's. Agents, Bell Island, C.B.

aug19.t.f.f.

## Canadian National Railways

Are you going to Boston or New England points, if so, remember that one of the best routes from Halifax is via Halifax and South Western Railway and Yarmouth.

For rates and other information, apply

J. W. N. Johnstone,

GENERAL AGENT,  
Board of Trade Building.

## KARL S. TRAPNELL, Opt. D.,

EYESIGHT SPECIALIST,

307 Water Street, Upstairs.

HOURS—10-1: 2.30-6: Evenings by  
appointment.

## HOME ENDORSEMENTS

TO WHOM IT MAY CONCERN:—Having made a personal examination of the original letters received from persons testifying to the results obtained from using Dr. Kinsman's Heart Tablets, we find them to be genuine and that the printed copies of same are correct in every respect.

Being personally acquainted with the proprietor, a life-long resident of this city, we can assure all of courteous treatment and honest dealing. William T. Haines, Gov. of State of Maine 1922-28; Roy L. Wardwell, Treasurer of Augusta; G. E. Macomber, Pres. Kennebec Savings Bank; T. J. Lynch, Pres. Loan & Bldg. Assn.; W. G. Boothby, Treas. Kennebec Savings Bank; A. E. Barbour, Cashier Granite Nat'l Bank; Blaine Oveit, Pres. Augusta Board of Trade; Blaine S. Viles, Mayor of Augusta; E. B. Harwood, Chief of Police; C. S. Hichborn, Pres. First Nat'l Bank; Geo. G. Libby, Treas. State Trust Co.; T. A. Cooper, Cashier First Nat'l Bank; Rev. C. G. Mosher, Pastor Free Baptist Church; E. M. Mower, Agent American Express Co.; Burleigh Martin, City Clerk of Augusta; C. A. Milliken, Ex-Mayor of Augusta; Treby Johnson, Pres. Granite Nat'l Bank; F. E. Smith, Treas. Augusta Trust Co.; J. E. Liggett, Vice Pres. State Trust Co.; Rev. H. E. Dunnack, Pastor M. E. Church; C. W. Jones, Clerk of Courts.

P.O. Box 918, St. John's, N. S. L. A. BASHA, Nfld. Distributor.  
Heart Tablets are sold at every Drug Store. Price \$1.00 per box.

Forty-Three Years in the Public  
Service—The Evening Telegram

Advertise in the Evening Telegram