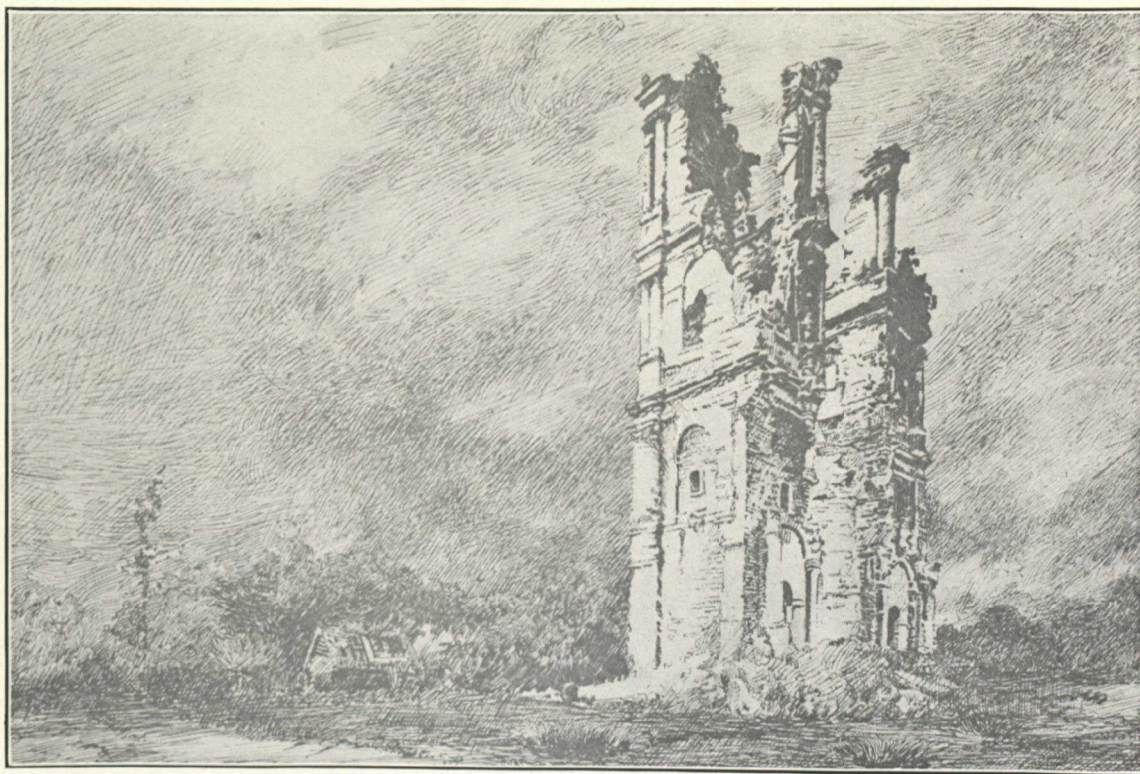


*THE GOLD STRIPE*



MONT ST. ELOI, FRANCE

Copyright, A. & E. Cherry.

From the Drawing by Arthur L. Cherry, R.A.F.



"THE ROAD TO POPERINGHE."

Copyright, A. & E. Cherry.

From the Drawing by Arthur L. Cherry, R.A.F.