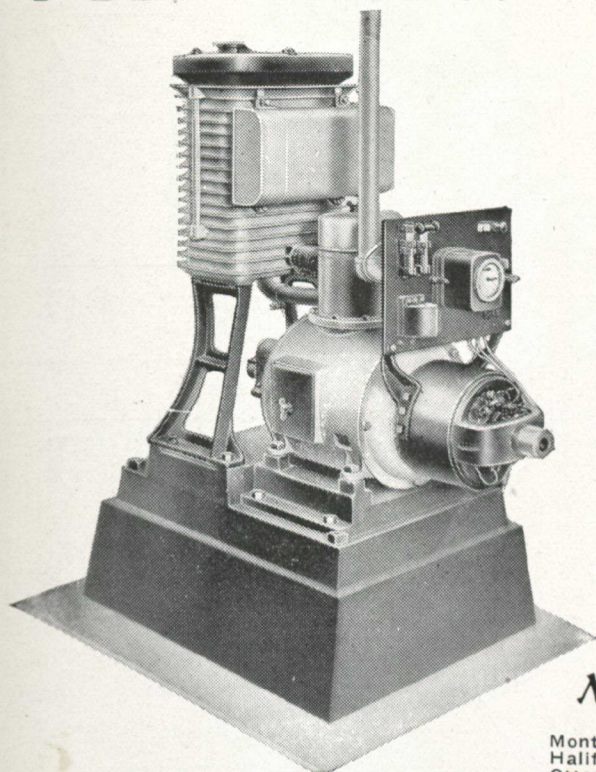


Northern Electric

POWER AND LIGHT



Electric Plants for Every Service
350 to 5,000 watts.

Especially adapted to camps—saw-mills—
construction work—stores—farms and all
country houses.

This cut shows the Utility model $\frac{3}{4}$ K.W.
usually furnished with storage battery, but
obtainable as a one-piece generating unit.

Its features include: Bosch Magneto—
S.K.F. Ball Bearings—Electric Governor—
and concealed Flywheel—it is self-cranking
and stops itself when battery is charged.

Northern Electric Company
LIMITED

Montreal
Halifax
Ottawa

Toronto
London

Regina
Calgary

Edmonton
Vancouver
Winnipeg

Foresters' Equipment

MOSQUITO AND INSECT PROOF TENTS
WATER AND MILDEW PROOF BAGS
FROST PROOF SLEEPING BAGS
ALL "WOODS" QUALITY

Woods Manufacturing Co.

DEPT. D.

OTTAWA