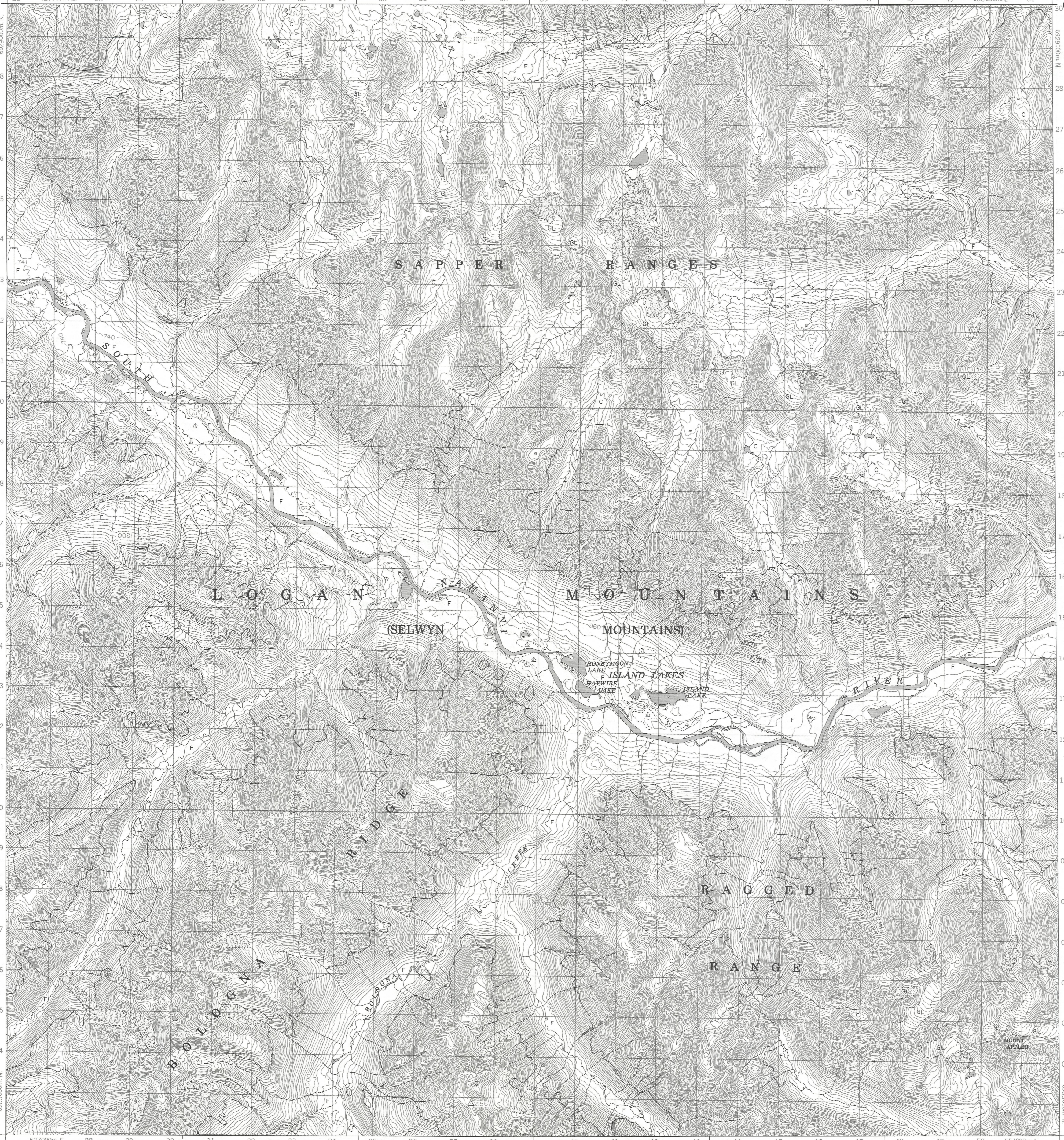


Military users, refer to this map as: SÉRIE A 701 SÉRIE MAP 105-1/8 CARTE Reference de cette carte pour usage militaire: ÉDITION 1 MCE ÉDITION

MOUNT APPLER 105-1/8 ÉDITION 1 ÉDITION

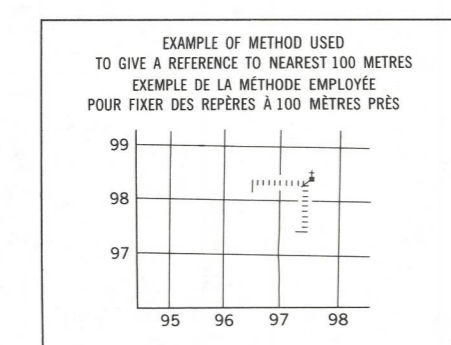
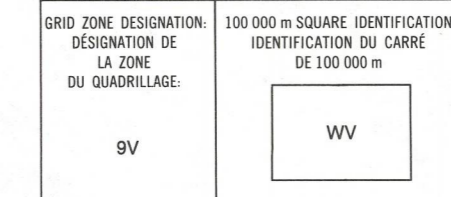


LEGEND - LÉGENDE

- ROAD, HARD SURFACE; ROAD, LOOSE SURFACE; CART TRACK, WINTER ROAD; TRAIL, CUT LINE, PORTAGE; BUILT-UP AREA; RAILWAY: SIDING, STATION, STOP; BRIDGE; SEAPLANE BASE, SEAPLANE ANCHORAGE; HOUSE, BARN; CHURCH, SCHOOL, POST OFFICE; TOWER, LANDMARK OBJECT; WELL, OIL, GAS, TANK, WATER; POWER TRANSMISSION LINE; MINE, GRAVEL PIT; CUTTING, EMBANKMENT; INTERNATIONAL, PROVINCIAL BOUNDARY WITH MONUMENT AND NUMBER; PROVINCIAL BOUNDARY, UNSURVEYED; COUNTY, DISTRICT BOUNDARY; TOWNSHIP, PARISH BOUNDARY; MUNICIPALITY BOUNDARY; RESERVE, SANCTUARY, PARK, ETC. BOUNDARY; OUTLINED LANDMARK AREA BOUNDARY APPROXIMATE, ETC.; D.L.S. TOWNSHIP CORNER, SURVEYED, UNSURVEYED; D.L.S. SECTION CORNERS; HORIZONTAL CONTROL POINT; BENCH MARK WITH ELEVATION; SPOT ELEVATION, PRECISE; STREAM OR SHORELINE, INDEFINITE; LAKE, INTERMITTENT; LAKE, SHALLOW; FLOODED LAND; MARSH; SWAMP, WOODED; STRING BOG; DRY RIVER BED WITH CHANNELS; RAPIDS; FORESHORE FLATS, SAND IN WATER; ROCKS; TUNDRA, LAKES IN TUNDRA; POLYTONES; PALSAS BOG; DAM, WHARF; ICEFIELD (GLACIER); MORAINES; PINNO; DITCH; CONTOURS; APPROXIMATE CONTOURS; DEPRESSION CONTOUR; CLIFF; SPOT ELEVATION, APPROXIMATE; LAND, WATER; ESKER; SAND, SAND DUNES, RAISED BEACHES; HISTORIC SITE; WOODED AREA, FOREST, CLEARED AREA.

PHOTOGRAPHY PHOTOGRAPHIE

Table with 2 columns: PHOTOGRAPHY, PHOTOGRAPHIE. Rows include grid zone designations like A-26130, A-24801, A-26130.



REVISION REVISION

Table with 2 columns: REVISION, REVISION. Shows a grid with various numbers and symbols.

REFERENCE POINT POINT DE RÉFÉRENCE; EASTING; ABSISSSE; ESTIMATE NUMBER OF SQUARES; ESTIMER LE NOMBRE DE CARRÉS; NORTHING; ORDONNÉE; GRID REFERENCE; RÉFÉRENCE AU QUADRILLAGE.

Index to adjoining Maps of the National Topographic System

Index table showing map grid coordinates: 105-1/10, 105-1/9, 95 L/12; 105-1/7, 105-1/8, 95 L/5; 105-1/2, 105-1/1, 95 L/4.

ONE THOUSAND METRE UNIVERSAL TRANSVERSE MERCATOR GRID ZONE 9 QUADRILLAGE DE MILLE MÈTRES TRANSVERSE UNIVERSEL DE MERCATOR

The 1985 MAGNETIC BEARING is 31°51' (566 mils) EAST OF GRID NORTH. ANNUAL CHANGE DECREASING 9.0". GRID NORTH is 0°40' (12 mils) EAST OF TRUE NORTH for centre of map.

PRODUCED BY THE SURVEYS AND MAPPING BRANCH, DEPARTMENT OF ENERGY, MINES AND RESOURCES, OTTAWA, PUBLISHED IN 1985.

ELEVATIONS IN METRES ABOVE MEAN SEA LEVEL CONTOUR INTERVAL . . . . . 20 METRES NORTH AMERICAN DATUM 1927 TRANSVERSE MERCATOR PROJECTION

MOUNT APPLER DISTRICT OF MACKENZIE DISTRICT DE MACKENZIE NORTHWEST TERRITORIES TERRITOIRES DU NORD-OUEST Scale 1:50 000 Échelle

ALTITUDES EN MÈTRES ÉQUIDISTANCE DES COURBES . . . 20 MÈTRES SYSTÈME DE RÉFÉRENCE GÉODÉSIQUE NORD-AMÉRICAIN 1927 PROJECTION TRANSVERSE DE MERCATOR

ÉTABLI PAR LA DIRECTION DES LÉVÉS ET DE LA CARTOGRAPHIE, MINISTÈRE DE L'ÉNERGIE, DES MINES ET DES RESSOURCES, OTTAWA, PUBLIÉ EN 1985.

