

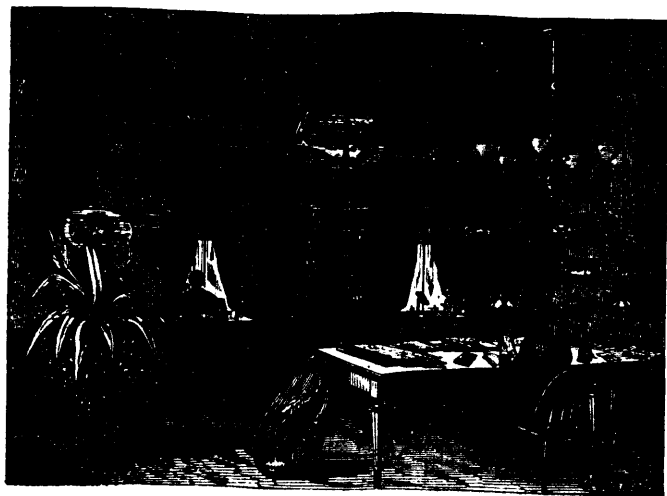
judged from the next picture, which seems to destine him to a plaster of Paris immortality.

So far we have only briefly touched upon a few of the dolphin's neighbors in the Aquarium. The wonderful crabs of all kinds and the beautiful anemones which form half the interest of the place, we cannot at present touch upon,—nor can we describe the elaborate and successful apparatus for fish culture, but we will conclude this paper with a description of the Hell-benders, though what there is in this innocent-looking creature to merit the bestowal of such a name, or to justify the artist in representing him as the cause of a distressing nightmare, we are unable to tell. The Hell-bender is found in the Alleghany river and the other tributaries of the Ohio. It is called sometimes the Salamander of the Alleghanies. A curious fact about this animal is that it sheds a transparent membrane which is the exterior layer of the skin; this it afterwards swallows. This membrane is first seen to loosen and separate from the entire surface of the body, appearing at this stage like an envelope or



MAKING A CAST OF THE ANGLER.

glove in which the animal is contained. By a number of wide gapings, during which the mouth is opened to the fullest extent the skin is parted about the lips and then commences to fold backward from the head. Convulsive and undulating movements with the body and forelegs are employed to extract these



INTERIOR OF READING-ROOM.