

The Army Grows Greater



Every year sees the army of users of Shirriff's True Vanilla growing greater. For thirty years this famous extract has been making converts to True Vanilla.

Women who tried

Shirriff's True Vanilla

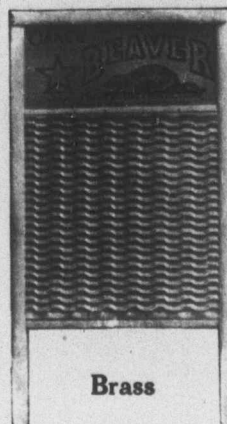
thirty years ago are using it to-day. Their daughters are using it. Their friends are using it. For it is a recognized fact that those who use one bottle of Shirriff's True Vanilla want to use it again. And its use soon becomes a firmly fixed habit, for who would want to go back to an ordinary Vanilla after tasting the flavor of the extract of the finest Mexican Vanilla Beans—Shirriff's True Vanilla?

Grocers, too, who bought Shirriff's True Vanilla thirty years ago are buying it to-day. It has stood the test of time. It has proven itself worthy of the grocers' trust. It is always worth 100 cents on the dollar. Always pays a good profit.

Imperial Extract Co.

Steiner and Matilda Streets

Toronto



Brass



Zinc

Four different wash surfaces

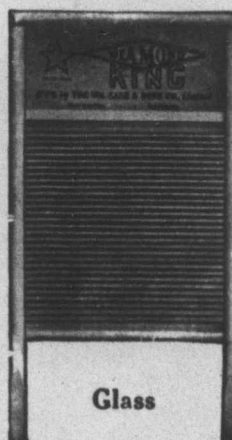
There is a Cane Washboard surface to meet every requirement. By handling these lines you will not only insure satisfaction, but you will get their trade for other "Cane" Woodenware Products.

These include pails, tubs, mop-sticks, butter molds, bake boards, folding clothes and saw horses, etc.

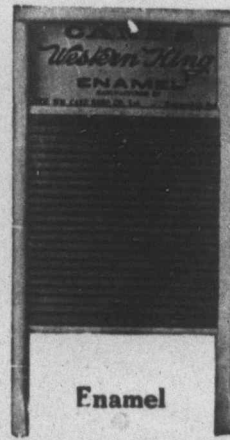
Made with best materials, good workmanship and fine finish. Satisfaction guaranteed—profits are remunerative.

Your jobber can supply you. Get our catalogue for reference.

The Wm. Cane & Sons Co., Ltd.
NEWMARKET ONTARIO



Glass



Enamel