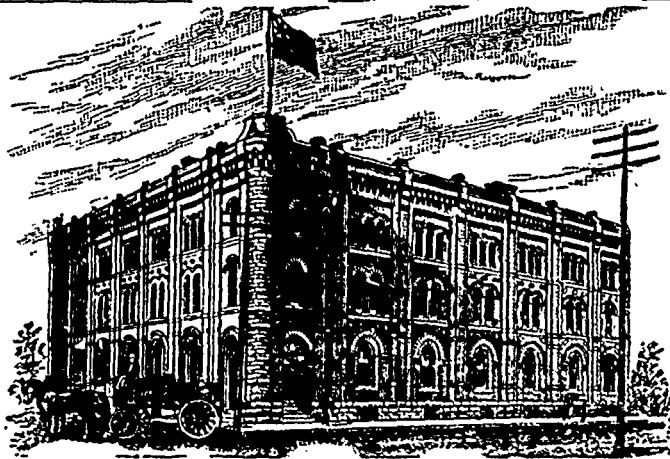


GOODS SOLD TO THE
TRADE ONLY.GOODS SOLD TO THE
TRADE ONLY.

G. F. & J. GALT,

DIRECT IMPORTERS

TEAS, SUGARS, WINES, LIQUORS and GENERAL GROCERIES
CORNER PRINCESS AND BANNATYNE STREETS, WINNIPEG, MANITOBA.

Grain and Milling

About 1,000,000 bushels of wheat, it is estimated, are in inland elevators in Manitoba.

Smith & Brigham, of the Moosomin, Assa., flour mill, contemplate erecting an elevator at their mill this season.

The *News*, of Vancouver, B. C., says that shipments of Manitoba flour have almost dropped off, and flour is now mostly coming from the states to the south.

The Winnipeg millers are trying to so arrange matters that they will be able to close their offices on Saturday afternoons and give their employees a half holiday.

The mill committee at Killarney, Man., will canvass thirteen townships in the district for subscriptions. An offer has been received by the secretary of the mill committee, offering to build a first-class roller mill there.

A representative of the milling firm of Moyer Bros., Listowell, Ont., who was talking of establishing a flour mill at Neepawa, Man., is proposing to establish a mill at Morden, Man., if given a loan of \$6,000 or \$8,000, to be repaid with interest.

The Pilot Mound, Man., *Sentinel* says a United States firm offer to supply the Pilot Mound Milling Co., lately formed, with machinery for a roller flour mill for \$7,327. In addition the engine will cost \$1,575 without the boilers. The mill to be of 75 barrel capacity. Another firm at Minneapolis offer to provide all the machinery required for a 75 barrel mill, including the engine, for \$10,000.

Dairy Matters.

S. M. Barra, of the St. Norbert factories, Man., has received a centrifugal butter machine from Denmark.

The Vancouver, B. C., *News* say: Importations of butter from the States to the south of us are very large. Manitoba shipments have almost dropped off. In regard to butter, some consignments from Manitoba of very poor quality were sent out here, and it has hurt their trade on the coast.

Arrangements have been made with Mr. Richardson, of Grenfell, to build the creamery to be established at Broadview, Assa. The lumber is on the ground, and it is to be completed by the 1st of May.

The Plympton cheese factory building and plant will be offered for sale by auction on April 24, under mortgage foreclosure. Sale takes place at Gillespie's Hotel. Plympton municipality is located in the Winnipeg district, Man., east of Winnipeg.

Trade and General News.

Notice of resolution has been given in Parliament by Mr. Foster that it is expedient to provide that the Governor-in-Council may enter into a contract for a term not exceeding ten years with a company for the performance of a fast weekly steamship service between Canada and the United Kingdom, making connection with French ports, on such terms and conditions as the carriage of mails, and otherwise, as the Governor-in-Council may deem expedient, for a subsidy not exceeding \$500,000 a year.

The Cincinnati *Price Current* of April 11, says:—Western packing operations again show some reduction, the returns indicating a total of 155,000 hogs packed for the week, compared with 165,000 the preceding week, making a total of 1,085,000 since March 1. Corresponding week last year was the same as the past week, 155,000 hogs; total for the season \$50,000. Present increase over last year 235,000 hogs. Quality generally good. Prices have averaged lower, closing about 10 cents per 100 pounds below a week ago at most centres. The marketing will increase a little later, but it does not appear likely that up to the first of July it will show much if any gain over corresponding time last year; some increase may be counted upon, as also somewhat heavier average weight.

Canned Salmon.

The time is rapidly approaching for the run of salmon on the Columbia river, but notwithstanding this, dealers have continued to mani-

JAMES PYE, FLOUR MILL BUILDER

CONSULTING ENGINEER, &c.

218 Third Avenue South,
MINNEAPOLIS, - MINN.

A Manitoba Testimonial.

PORTAGE LA PRAIRIE, Dec. 8th, 1887.

JAMES PYE, Esq., Minneapolis, Minn., U.S.A.:
DEAR SIR,—In handing you our check for \$1,301.24, in full for balance on your contract for building and enlarging our mill, we without solicitation wish to state, that you have done your work in a manner highly satisfactory to this company. The capacity which you guaranteed at 275 barrels we find considerably under the mark, as we are at present making over 300 barrels, and the quality of the flour is all that we could wish for. Some of our largest purchasers frankly tell us, it is equal to any flour made in either Minnesota or this province. The yield also we find very satisfactory. We must also bear testimony to your pleasing and gentlemanly manner, and your willingness at all times to meet our wishes. This has made our business relations pleasant and we can honestly say, that we recommend you to any person, requiring anything in the mill building or mill furnishing line. Wishing you the success that straight dealing merits, we are
Yours very truly,

THE PORTAGE MILLING CO.
Jas. MacLennan, Managing Director.

fest indifference regarding future deliveries, and are deaf to the entreaties of those who are endeavoring to obtain orders. Evidently the canners on the coast are becoming anxious for business. They state positively that they have sold quantities for export that in the aggregate exceed 100,000 cases, but many have taken no orders and others are in a position to offer balances. Dealers here are seemingly of the belief that there will be fish enough to go round, especially if present views of packers are maintained, as consumption is checked when prices reach the limit they have occupied for the past year. Spot salmon to-day cannot be sold in any quantity at \$1.80 to \$1.82½, therefore when the cost to lay down the next catch is \$1.85 and above, naturally there is a hesitation among those who are looked to as distributors to again venture into the market to stock up for probable requirements.—N. Y. *Commercial Bulletin*.

SUPPLEMENTARY letters patent have been granted, whereby the capital stock of the Cochrane Ranch Co., of Alberta, is increased from \$250,000 to \$400,000.

THE bankrupt stock of Burke & Stone, general merchants, Cartwright, Man., was sold by the sheriff, in Winnipeg, and brought 52 cents in the dollar, Mr. Stobart being the purchaser. Burke & Stone made an assignment, but not until it was too late to be of any avail, as several judgments were in ahead of the assignment, and consequently the sheriff had possession. The assignment, it is understood, was purposely delayed.

In the Dominion Parliament Hon. Mr. Foster said that he could not say whether there would be any changes of the tariff or not this session. He also stated that the Government had not yet definitely decided as to whether they would remove the duty from export logs or not. The Government was also considering the question of whether or not the customs amendment act as to adding inland carriage of freight to the duty to be imported should become law or not. The leading boards of trade in Canada have strongly protested against the latter proposition.