

J. F. CASSIDY & CO.,**Auctioneers and Commission Merchants**

36 Colborne Street, Toronto.

Panrupt stocks sold *en bloc* or in detail. Trade sales affording unequalled facilities for turning surplus stock into cash. We also handle samples for private sale, and produce for country merchants and dealers.

AMERICAN TRUST COMPANY.173 BROADWAY,
NEW YORK.67 YONGE STREET,
TORONTO, ONT.**AUTHORIZED CAPITAL, - \$1,000,000.**

THE AMERICAN TRUST COMPANY has recently authorized an increase of its Capital Stock to One Million Dollars, and issues Three Classes of Stock:

Ordinary Instalment Stock,
Regular Full Paid Stock, and
8 per Cent. Guaranteed Preferred Stock.

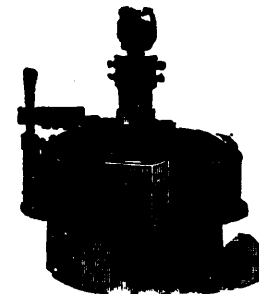
The different classes of stock meet the wants of different investors. This issue of Instalment Stock offers an exceptional opportunity for persons desiring to lay aside a few dollars each month, where they can realize Eight per Cent. on their money. It will pay you to investigate this Instalment Stock. Write for pamphlet and full information.

WILLIAM H. MILLER,
TORONTO, ONT.**WILLIAM KENNEDY & SONS,**

OWEN SOUND, ONT.

MFRS OF THE

"New American"
TURBINE
Heavy Mill Work.



Water Power Pumping Machinery for Domestic and Fire purposes.

Plans, Estimates, and Superintendence to Construction of Municipal Water Works and Improvement of Water Powers.

DOMINION PAPER BOX COMPANY,
MANUFACTURERS OF
HARDWARE FOLDING BOXES,

CONFECTIONERS' FOLDING BOXES.

Packages specially adapted for all classes of goods.
74 and 76 King St. West, Toronto.

JOHN J. GARTSHORE,
49 Front St. W., Toronto. Telephone 616.**Railway and Tramway Equipment.**

New & Second hand Steel & Iron **RAILS.**
Wrought and Cast Scrap Iron by Carload or Cargo.
Send for prices.

—THE—

Canadian Mutual Loan and Investment Co.

HEAD OFFICE:

51 Yonge Street, Toronto, Canada.

The cost of a share is \$1 membership fee, and 60 cents monthly dues. Maturity value of a share is \$100, and estimated limit of maturity is 7 years. Monthly payments of \$3 will yield \$500 on maturity of share. A saving of 90 cents a day invested here will insure \$1,000 in 7 years.

ESTABLISHED 1845.

L. COFFEE & CO.,

Produce Commission Merchants,

No. 80 Church Street, - Toronto, Ont.

LAWRENCE COFFEE.

THOMAS FLYNN.

TORONTO PRICES CURRENT.

(CONTINUED.)

Fruit—Cases, 2 doz. each.

APPLES—3's	per doz.	\$1 25
Gallons		3 00
BLUEBERRIES—2's, Loggie's		1 25
RASPBERRIES—2's, Lak-p		1 50
STRAWBERRIES—2's, Oulter's		2 40
PEARS—3's, Barlett, Deloit		9 00
3's, Bartlett, Bouter's		9 75
PEACHES—2's, Beaver, Yellow		8 85
2's, Victor, Yellow		8 85
3's, Victor, Yellow		8 85
3's, Beaver, Yellow		1 85
3's, Pie		2 10
QUINCES—2's, Bouter's		2 10
PLUMS—2's, Green G. ge, Nelles		1 80 2 10

Vegetables—Cases, 2 doz. each.

BEANS—2's, Stringless, Bouter's	per doz.	\$0 88 0 95
2's, White Wax, Lakeport		1 00
3's, Boston Baked, Delhi		1 45
CORN—3's, Lion, Bouter's		1 50
2's		1 20
2's, Canada First, Aylmer		1 15
2's, Epicure, Delhi		1 75
PEAS—Marrowfat, 2's, Delhi		1 30
Champion of E., 2's, Aylmer		1 30
Standard, 2's		1 25
Ontario Sweet Wrinkled		1 30
PUMPKINS—3's, Aylmer		1 00
3's, Delhi		1 00
3's, Lakeport		1 10
TOMATOES—Crown, 3's	new,	1 45 1 50
Ice C style, 3's		1 45 1 50
Beaver, 3's		1 45 1 50
TOMA CATSUP—2's		0 75

Fish, Fowl, Meats—Cases.

MACKEREL—Myrick's 4 doz	per doz	\$1 45
Empire, 4 doz		1 40
SALMON—Lynn, 4 doz		1 40
Horshoe, 4 doz, 10 case lots		1 50
" " in less		1 55
White, 4 doz		1 25
B. A. Salmon		1 45
SARDINES—Martiny's	per tin	10 1
3's, Chancellerie, 100 tins		0 10
3's, Alberta, 100 tins		0 11
3's, Alberta, 100 tins		0 18
3's, Rouillard, 100 tins		0 17
CHICKEN—Boneless, Aylmer, 12's, 2 doz. per doz		2 30
TURKEY—Boneless, Aylmer, 12's, 2 doz.		2 35
DUCK—Boneless, 1's, 2 doz		2 35
LUNCH TONGUE—1's, 2 doz		2 65
PIGS' FEET—1's, 2 doz		2 40
CORNER BEEF—Clark's, 1's, 2 doz		1 50
" Clark's, 2's, 1 doz		2 60
" Clark's, 1's, 1 doz		1 80
Ox TONGUE—Clark's, 2's, 1 doz		7 50
LUNCH TONGUE—Clark's, 2's, 1 doz		5 50
SOUP—Clark's, 1's, Ox Tail, 2 doz		1 50
" Clark's, 1's, Chicken, 2 doz		1 50

Sawn Lumber, Inspected, B.M.

Clear pine, 1 1/2 in. or over, per M	\$38 00	35 00
Pickings, 1 1/2 in. or over	28 00	25 00
Clear & pickings, 1 in	28 00	25 00
Do. do. 1 1/2 and over	30 00	28 00
Flooring, 1 1/2 & 1 1/4 in	14 00	16 00
Dressing	15 00	16 00
Ship, hulls stks & sids	19 00	13 00
Joists and Scantling	19 50	13 50
Clapboards, dressed	19 50	00 00
Shingles, XXX, 16 in	9 25	9 40
" XX	1 40	1 60
Lath	1 75	1 85
Spruce	10 00	13 00
Hemlock	00	11 00
Tamarac	12 00	14 00

Hard Woods—p M. ft. B.M.

Birch, No. 1 and 2	\$17 00	30 00
Maple	16 00	18 00
Cherry	60 00	65 00
Ash, white	24 00	28 00
" black	16 00	18 00
Elm, soft	11 00	13 00
" rock	18 00	00 00
Oak, white, No. 1 and 2	25 00	30 00
" red or grey	30 00	25 00
Balm of Gilead, No. 1 & 2	13 00	15 00
Chestnut	25 00	30 00
Walnut in. No. 1 & 2	85 00	100 00
Butternut	30 00	40 00
Hickory, No. 1 & 2	28 00	00 00
Boxwood	16 00	18 00
Whitewood	35 00	40 00

Fuel, &c.

Coal, Hard, Egg	\$ 6 00	0 00
" Stove	6 00	0 00
" Nut	6 00	0 00
" Soft, Blossburg	5 52	0 00
" Briarhill best	5 51	0 00
Wood, Hard, best uncut	5 51	0 00
" 2nd quality, uncut	4 50	0 00
" best cut and split	6 00	0 00
" 2nd quality cut and split	5 00	0 00
" Fine, uncut	4 50	0 00
" cut and split	5 00	0 00
" slabs	3 50	0 00

LIVERPOOL PRICES.

April 30, 1891.

Wheat, Spring	s. d.	0 0
Kansas Winter		0 0
No. 1 Cal.		8 8
Corn		6 0
Peas		6 0
Barley		33 3
Beacon, long clear		31 0
" short clear		31 0
Tallow		27 0
Cheese		59 0

Railway Companies.

INTERCOLONIAL RAILWAY
OF CANADA.

—THE—

Direct Route between the West and

All points on the LOWER ST. LAWRENCE
and BAIE DES CHALEUR, PROVINCE
of QUEBEC; also for NEW BRUNSWICK,
NOVA SCOTIA, PRINCE
EDWARD, CAPE BRETON
ISLANDS,
NEWFOUNDLAND, AND ST. PIERRE.

Express trains leave Montreal and Halifax daily (Sunday excepted), and run through, without change between these points, in 36 hours and 55 minutes. The through express train cars of the Intercolonial Railway are brilliantly lighted by electricity, and heated by steam from the locomotive; thus greatly increasing the comfort and safety of travellers. New and elegant buffet, sleeping and day cars are run on all through express trains.

CANADIAN EUROPEAN MAIL AND PASSENGER ROUTE.

Passengers for Great Britain or the Continent leaving Montreal on Friday Morning will join outward mail steamer at Halifax on Saturday. The attention of shippers is directed to the superior facilities offered by this route for the transport of flour and general merchandise intended for the Eastern Provinces and Newfoundland; also for shipments of grain and produce intended for the European market. Tickets may be obtained and all information about the route, also freight and passenger rates on application to

N. WEATHERSTON,

Western Freight and Passenger Agent,
35 Rossin House Block, York St., Toronto.

D. POTTINGER,

Chief Superintendent.

Railway Office, Montreal, N.B.,
24th Nov., 1890.**DAMAGE BY FIRE APPRAISED.****ALEX. BRUCE,**

Builder and Contractor.

GUELPH.

THE MERCANTILE AGENCY

The oldest and most trustworthy medium for information as to the history and position of traders in the United States and Canada. Branch Offices in TORONTO, MONTREAL, HALIFAX, HAMILTON, LONDON, ST. JOHN, WINNIPEG, VICTORIA, B. C., and in one hundred and twenty-five cities of the United States & Europe. Reference Books issued in January, March, July and September, each year.

DUN, WIMAN & CO.**Stationery** THE
MONETARY TIMES
PRINTING OFFICE

IS THOROUGHLY EQUIPPED WITH
COMPETENT WORKMEN AND THE BEST MACHINERY FOR THE
SUPPLYING OF TASTEFUL TYPOGRAPHY IN

Letter Heads Bill Heads Memorandums
Note Books Drafts Check Books
Catalogues of every description

ROBERT BEATY & Co.

61 KING ST. EAST,

(Members of Toronto Stock Exchange).

Bankers and Brokers,

Buy and sell Stocks, Bonds, &c., on Commission, for
Cash or on Margin. American Currency
and Exchange bought and sold.

Insurance.

Provident Savings Life Assurance Society
OF NEW YORK.

SHEPHERD HOMAN, PRESIDENT.
WILLIAM E. STEVENS, SECRETARY.
Agents wanted in unrepresented districts—this Company's plans are very attractive and easily worked. Liberal contracts will be given to experienced agents, or good business men who want to engage in life insurance.
Apply to R. H. MATSON, General Manager for Canada, 57 YONGE STREET, TORONTO.