

There has been a revolt in Switzerland.

Italy has sent troops to the frontier to protect the St. Gothard Railway. Telegraphic communication between Guatemala and Honduras has been restored.

The Mexican Congress opened on the 15th inst. The country is very prosperous.

Striking bakers at Cork, Ireland, have become violent. Several arrests have been made.

The dock laborers strike at Southampton is over, and the men have returned to work.

There are signs of a collapse in the strike in the shipping trade at Melbourne, Australia.

Telephonic communication between London and Paris is expected to be inaugurated in a few days.

Rev. Henry Parry Liddon, D.D., D.C.L., Canon of St. Paul's Cathedral, died on the 9th inst.

The total annual home consumption of opium in China has lately been reckoned to be about £41,800,000.

An explosion occurred in the Strassperth coal pit at Losderberg to day. Twenty persons are entombed in the mine.

Dr. Koch, the German physician who claims a method of curing consumption by inoculation, is about to commence experiments on human patients suffering from tuberculosis.

The health of Princess Louise of Wales, Duchess of Fife, is giving her husband and royal relatives great uneasiness. She has never entirely recovered from the effects of her late illness and suffers from almost daily fainting fits.

The Legislative Assembly of New South Wales, by a vote of 97 to 18, has adopted Sir Henry Parkes' scheme for an Australian Federation. The Assembly appointed a committee to represent the colony at the coming Federal Convention. Sir Henry Parkes is a member of the committee.

The first cable road in Paris has recently been put in operation, and is operated on a steep grade from the centre of Paris up to the Belleville church, a distance of nearly one and one-half miles. The cable runs at a speed of 7½ miles an hour, and is propelled by two Corliss engines of 100 horse power.

The Triple Alliance between Germany, Italy and Austria has been extended until May, 1897. The renewal of the treaty so long before its expiration is due to the insistence of Count Kalnoky, who feared the Italian elections would cripple Signor Crispi and cause a change in Italy's foreign policy.

A fire in the Alhambra Palace, Granada, on Monday night, was extinguished at an early hour next morning. The flames were confined to the portion of the Palace in which it originated, after several hours of incessant work. The flames destroyed the magnificent Sala de La Barca and the right wing of the Arrayance Court. It is strongly suspected to be of incendiary origin.

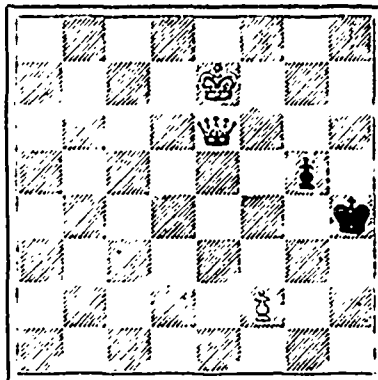
CHESS.

The following problemotto has been going the rounds as the production of Miss Lilian Baird, a child only 8 years old. As such it is certainly a remarkable production.

PROBLEM No. 37.

Gleaner.

BLACK 2 pieces.



WHITE 3 pieces.

White to play and mate in 2 moves.

GAME No. 38.

Third game in the match now being played between Blackburn and Leo at the Bradford Chess Club.

FRENCH DEFENCE.

Blackburn.

Leo.

WHITE

BLACK.

- | | |
|-----------------|--------------|
| 1 P to K4 | P to K3 |
| 2 P to Q4 | P to Q4 |
| 3 P takes P | P takes P |
| 4 Kt to B3 | Kt to B3 |
| 5 B to Q3 | B to Q3 |
| 6 Castles | Castles |
| 7 B to KKt5 | B to KKt5 |
| 8 Q Kt to Q2 | P to B3 a |
| 9 R to K1 | QKt to Q2 |
| 10 P to KR3 | B to R4 |
| 11 P to KKt4 b | B to Kt3 |
| 12 B takes B | RP takes B |
| 13 Kt to K5 | Q to B2 |
| 14 Kt takes Kt | Kt takes Kt |
| 15 Kt to B1 | Kt to K1 |
| 16 Q to Q2 c | Kt to B1 d |
| 17 B to K3 e | Kt to K3 |
| 18 Q to Q8 | R to K2 f |
| 19 B to Q2 g | QR to K1 |
| 20 P to KR4 h | Q to Kt3 j |
| 21 B to K3 k | Q takes KtP |
| 22 KR to Kt1 | Q to R6 |
| 23 R to Kt3 | Q to R4 |
| 24 P to R5 | P takes P |
| 25 P takes P | Q to B2 |
| 26 Q to B5 | Q to Q2 |
| 27 Q to R3 l | Kt to B5 |
| 28 Q takes Q | R takes Q |
| 29 Kt to Kt3 | P to KK3 |
| 30 QR to Kt1 | P to QKt4 |
| 31 P takes P | P takes P |
| 32 K to B1 | Kt to K3 |
| 33 Kt to K2 | Kt to Kt2 |
| 34 R to B3 | R to QB2 |
| 35 B to B4 | Kt to B4 |
| 36 B takes B | Kt takes B |
| 37 R to Q1 | Kt to K5 |
| 38 R to KB3 | R to R2 |
| 39 QR to Q3 | R to RS sq |
| 40 K to K2 | R to K8 |
| 41 QR to K3 | K to Kt2 |
| 42 Kt to B4 | R to QB8 |
| 43 R to K2 | P to KKt4 |
| 44 Kt to Q3 | R to Q8 |
| 45 P to B3 | P to KKt5 m |
| 46 KR to K3 | R to KR1 n |
| 47 Kt to K5 | R to R5 |
| 48 R to K1 | R takes R |
| 49 R takes R | R to R6 |
| 50 Kt takes BP | R takes P |
| 51 Kt to Kt4 | R to B6 o |
| 52 Kt takes P | R takes P sq |
| 53 K to Kt1 | R to B4 |
| 54 R takes Kt | R takes Kt |
| 55 R takes P sq | K to B3 |
| 56 K to B2 | R to R4 |

- | | |
|--------------|-----------|
| 57 R to Kt2 | R to R6 |
| 58 K to K1 | P to R1 |
| 59 K to Q2 | R to QR6 |
| 60 K to B1 | K to B4 |
| 61 R to K2 | K to B5 |
| 62 K to Kt2 | R to Q6 |
| 63 R to K5 | R takes P |
| 64 R takes P | Drawn. |

NOTES BY GUNSBURG.

- a Always a safe move.
 b Blackburn is never afraid of making a risky move in hopes of a lively combination.
 c Q to Q3 better.
 d Intent on a counter demonstration by Kt to K3 and Kt to B5.
 e In a rapid advance a counter demonstration often compels retreat with loss of time and position.
 f Black wisely intends to double rooks before advancing.
 g White has lost two important moves, he might have played 16 Q to Q3 and 17 B to Q2.
 h For want of a better move.
 j Black's tactical advantage begins to tell.
 k White had not time to examine 21 B to B3, Kt to B5; 22 Q to Q2, R to K7; 23 R takes R, R takes R; 24 Q takes Q1, etc.
 l Q takes B3 would for a moment have avoided exchange of queens.
 m It will be seen in this subtle struggle for an ending the experience of White has told in his favour somewhat.
 n Played with a view to a mate by R to K R8, but I think Kt takes B P a simple way of winning.
 o Black has not played his game to the best of advantage. This move is an oversight which loses a valuable pawn and deprives him of any chance of winning.—*The Week*.

WHEN THE HAIR

Shows signs of falling, begin at once the use of Ayer's Hair Vigor. This preparation strengthens the scalp, promotes the growth of new hair, restores the natural color to gray and faded hair, and renders it soft, lustrous, and glossy.

"We have no hesitation in pronouncing Ayer's Hair Vigor unequalled for dressing the hair, and we do this after long experience in its use. This preparation preserves the hair, cures dandruff and all diseases of the scalp, makes rough and brittle hair soft and pliant, and prevents baldness. While it is not a dye, those who have used the Vigor say it will stimulate the roots and colorings of faded, gray, light, and red hair, changing the color to

A Rich Brown

or even black. It will not soil the pillowcase nor a pocket-handkerchief, and is always agreeable. All the dirty, gummy hair preparations should be displaced at once by Ayer's Hair Vigor, and thousands who go around with heads looking like 'the fretful porcupine' should hurry to the nearest drug store and purchase a bottle of the Vigor."—*The Sunny South, Atlanta, Ga.*

"Ayer's Hair Vigor is excellent for the hair. It stimulates the growth, cures baldness, restores the natural color, cleanses the scalp, prevents dandruff, and is a good dressing. We know that Ayer's Hair Vigor differs from most hair tonics and similar preparations, it being perfectly harmless."—*From Economical Housekeeping, by Eliza R. Parker.*

Ayer's Hair Vigor

PREPARED BY

DR. J. C. AYER & CO., Lowell, Mass.
 Sold by Druggists and Perfumers.

Best and Safest!



is said by Government Analyst to be composed of Ingredients the best and safest for manufacturing Baking Powder.

THE DOMINION PAINT CO.

Are prepared to Supply the Trade with

MARINE PAINTS

AS BELOW

ATLANTIC ANTI-FOULING COMPOSITION for Iron Ships.

MOSELEY'S COPPER PAINT, for Wooden Ships.

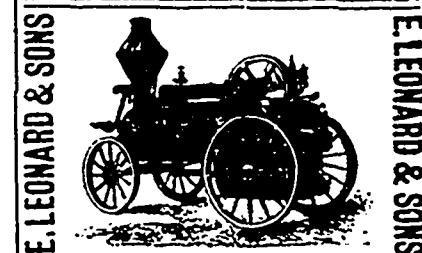
LIQUID MARINE BLACK PAINT.

GREEN

SEAM PAINT, a Perfect Substitute for Rosin. Also, Black and Bright Varnish, Roofing Pitch, Tar, &c. Quality guaranteed equal to anything manufactured.

Office & Works, Dartmouth.
 PHONE 020.

Halifax Printing Co., 161 Hollis St.
 Halifax, N. S.



BEFORE BUYING
 ENGINES, BOILERS,
 ROTARY SAW MILLS
 OR WOOD WORKING MACHINERY,
 Write **GEO. H. EVANS,**
 62 WATER STREET, ST. JOHN, N. B.
 For Catalogue C and prices.

THE BRAS D'OR STEAM NAVIGATION COM'Y, (LIMITED.)

SUMMER ARRANGEMENTS.

On and after JUNE 9th the
 Large and well Furnished
 STEAMER

MARION

will leave Port Mulgrave for Sydney and intermediate ports in the Bras D'Or Lakes every TUESDAY, THURSDAY, and SATURDAY on arrival of the I. C. R. train, due at 2.2, Railway time. RETURNING, will leave Sydney on MONDAY, WEDNESDAY, and FRIDAY at 2 p.m., connecting with Express Trains leaving Mulgrave for the West at 10.20 Railway time.

The well known favorite Steamer NEPTUNE will leave Mulgrave for Sydney via St. Peter's Canal and East Bay on arrival of the train, DAILY, RETURNING same night, in time for Morning Train.

The beautiful Steamer MAGNOLIA will run on the Lake between WHYCOMAGH & LITTLE BRAS D'OR, via BADDECK, as usual.

Tickets can be purchased at the Ticket Offices of the I. C. Railway, and all information given at office of

J. W. GORHAM & CO.
 Halifax, N. S.
 AGENTS.