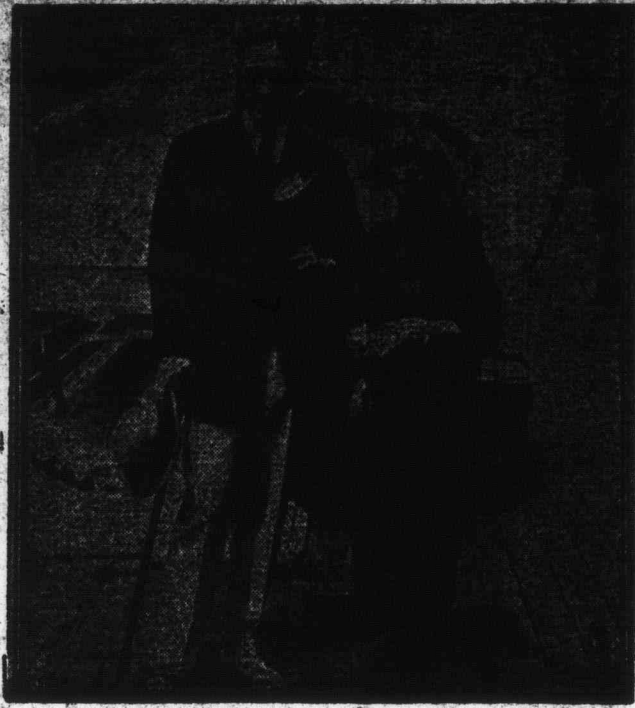


NOTABLES SAIL FOR EUROPE



Mr. and Mrs. John Emerson, well known scenario writers, sailing for Europe to-day on the SS. LaFrance. Mr. Emerson is president of the Actors' Equity Association, while Mrs. Emerson is better known as Anita Loos.

**Retired**

The money you spend during the long years of toil will not help you in the comfortably in retirement, in old age. It is only the money you are saving now that will bring ultimate independence.

Our Savings Department makes saving easy for you.

**THE STANDARD BANK OF CANADA**

ATHENS BRANCH

W. A. Johnson, Manager

**The Athens Reporter**

**SUBSCRIPTION RATES**

One year strictly in advance to any address in Canada \$2.00 when not paid. United States subscriptions \$2.00 per year in advance; \$2.50 when charged.

**ADVERTISING RATES**

Legal and Government Notices—10 cents per square inch (12 lines to the inch) for first insertion and 5 cents per line for each subsequent insertion.

Family Cards—Professional cards, \$9.00 per year.

Local Readers—10 cents per line for first insertion and 5 cents per line subsequent.

Book Type Readers—15 cents per line for first insertion and 7 1/2 cents per line for subsequent insertion.

Small Ads—Condensed adv'ts such as: Lost, Found, Strayed, To Rent, For Sale, etc., 1 cent per word per insertion, with a minimum of 25 cents per insertion.

Autograph Sales—40 cents per inch for first insertion and 20 cents per inch for each subsequent insertion.

Cards of Thanks and In Memoriam—50c

Obituary Poetry—10 cents per line.

Commercial Display Advertising—Rates on application at Office of publication.

William H. Morris, Editor and Proprietor

THURSDAY, JULY 22, 1920

**HARLEM**

Mr. Walter Almer and family of Brockville are visiting Harlem friends.

The late rains have very much improved crop prospects.

Mrs. Alex. Stevens and Mrs. Stevens were visitors at the Lone Pine Cottage.

Mr. Wesley Chant and wife and Mr. Percy Alford and Mrs. Alford, were the guests of Mr. J. C. Eyre.

Mrs. William Smith who died at home in Athens was buried in Harlem cemetery on Saturday afternoon by the side of her late husband who predeceased her two and a half years ago. They spent nearly half a century residents of Harlem and few, indeed, are the families in this locality who have not many times been benefited by the kind actions and open hands of this couple who are very much missed and will never be forgotten by the people of their native township in which they both always resided.

Are the directors of our county fair expecting our M.P. to follow the lead of Lanctot in using a good bit of the extra \$1,500 to boost the fairs and public enterprises of his riding.

Mr. Azra Pattimore lost a valuable cow from indigestion.



Alma Francis is the charming Summer Girl shown in the photo. The girle and sash of her light airy frock are of satin-de-luxe ribbon. Her hat and parasol are trimmed with the same material.

**Sweet's Corners Rural School Fair**

Geo. Roddick's Field

LYNDHURST

Wednes. Sept. 29 1920

**PUPILS' SCHOOL FAIR COMMITTEE**

President.....HOMER TYE, Lyndhurst  
Vice-President.....LILLIAN WHITE, Lyndhurst  
Secretary.....ELSWOOD BRYAN, Lyndhurst  
Treasurer.....HUBERT JUNE, Morton  
Directors—Thorneloe Price, Norman Bracken, Joan Harvey.

**TRUSTEE COMMITTEE**

Z. Jackson, Wm. F. Bracken, B. N. Henderson, Ziba Jackson, Albertus June, W. J. Bryan, A. B. White, T. J. Pritchard, Sec'y Woodvale School.

**ADMISSION FREE**  
Everybody Welcome

**PRIZE LIST**

- Class 1—Oats (O.A.C. No. 72)**
1. Sheaf Exhibit, 3 inches in diameter, selected from plot. 5 prizes—40c, 30c, 25c, ribbons.
  2. Grain Exhibit from yield of plot (1 peck). 5 prizes—40c, 30c, 25c, ribbons.
- Class 2—Barley (O.A.C. No. 21)**
1. Sheaf Exhibit, 3 inches in diameter, selected from plot. 5 prizes—40c, 30c, 25c, ribbons.
  2. One Gallon Grain grown on plot. 5 prizes—40c, 30c, 25c, ribbons.
- Class 3—Wheat (Marquis)**
1. Sheaf Exhibit, 3 inches in diameter, selected from plot. 5 prizes—40c, 30c, 25c, ribbons.
  2. One Gallon Grain grown on plot. 5 prizes—40c, 30c, 25c, ribbons.
- Class 4—Sweet Corn (Golden Bantam)**
1. Group of 6 ears selected from plot. 5 prizes—50c, 40c, 30c, ribbons.
- Class 5—Field Corn (Wisconsin No. 7)**
1. Group of 6 ears selected from plot. 5 prizes—50c, 40c, 30c, ribbons.
- Class 6—Potatoes**
1. Best 12 potatoes from plot (Irish Cobbler). 5 prizes—60c, 50c, 40c, ribbons.
  2. Best 12 potatoes from plot (Green Mountain). 5 prizes—60c, 50c, 40c, ribbons.
- Class 7—Mangels (Yellow Intermediate)**
1. Best 3 mangels. 5 prizes—50c, 40c, 30c, ribbons.
- Class 8—Beets (Detroit Dark Red) Table Size**
1. Best 6 beets. 5 prizes—50c, 40c, 30c, ribbons.
- Class 9—Carrots (Chantenay), Table Size**
1. Best 6 carrots. 5 prizes—50c, 40c, 30c, ribbons.
- Class 10—Turnips (Purple Top Swede)**
1. Best 6 turnips. 5 prizes—50c, 40c, 30c, ribbons.
- Class 11—Onions (Yellow Danvers)**
1. Best 6 onions. 5 prizes—50c, 40c, 30c, ribbons.
- Class 12—Flowers**  
(Arrangement of flowers considered by Judge)
1. Asters (Mixed Giant Comet), collection of blossoms. 5 prizes—40c, 35c, 30c, ribbons.
  2. Phlox (Drummondii). Collection of blossoms. 5 prizes—40c, 35c, 30c, ribbons.
  3. Best Bouquet from Home Garden. 5 prizes—40c, 35c, 30c, ribbons.
- Class 13—Poultry**
1. Best 3 birds from eggs distributed this year (1 male and two females). 6 prizes—\$1.00, 75c, 50c, ribbons.
  2. Best cockerel from eggs distributed this year. 6 prizes—75c, 50c, 25c, ribbons.
  3. Best pullet from eggs distributed this year. 6 prizes—75c, 50c, 25c, ribbons.
  4. Best Pen, any variety (spring chickens, 1 male and 2 females). 6 prizes—75c, 50c, 25c, ribbons.
  5. Best Pen, 1 cock and 2 hens, from eggs distributed last year. 6 prizes—75c, 50c, 25c, ribbons.
  6. Best dozen white eggs. 6 prizes—30c, 20c, 10c, ribbons.
  7. Best dozen brown eggs. 6 prizes—30c, 20c, 10c, ribbons.

**Ice Cream Social and Supper**  
Fair Grounds Delta  
WEDNES. JULY 28, 8 to 10 p.m.  
Under auspices of St. Paul's Church  
Admission 50c Children 35c

**HOT ?**

If you are hot in mind and body, we bring you uews of comfort---

- Our light weight Silk Caps, Panamas and Straw Hats will be a great relief on your mind.
- Our Cool Underwear, two pieces or combination, short or long sleeves or athletic styles, will be a great comfort to your body.
- Our nice light weight Suits in two or three pieces, Outing Trousers, Negligee Shirts, Silk and Lisle Socks, Bathing Suits, Jerseys, etc., will be a great comfort to your whole body, and our popular low prices will be a great relief to your whole mind.

**The GLOBE Clothing House**  
"The Store of Quality"  
BROCKVILLE ONTARIO

**The Churches**

**Methodist Church**  
Rev. S. F. Newton, Pastor  
Sunday Services:  
Morning at 10.30 Evening at 7.30  
Sunday School at 2.30 p.m.  
Through the week Services:  
Monday: Cottage Prayer Meeting 7.30  
Epworth League 8.00 p.m.  
Wednesday: Mid-Week Prayer Service at 7.30 p.m.

**Parish of Lansdowne Rear**  
Rev. V. O. Boyle, M.A., Rector.  
Eighth Sunday after Trinity.  
**CHRIST CHURCH, Athens**  
8.00 a.m.—Holy Communion.  
10.00 a.m.—Sunday School.  
11.00 a.m.—Holy Communion.  
**TRINITY CHURCH, Oak Leaf**  
2.00 p.m.—Sunday School.  
3.00 p.m.—Evening Service.  
**ST. PAUL'S, Delta**  
9.30 a.m.—Sunday School.  
7.30 p.m.—Evening Prayer.

**Baptist Church**  
R. E. Nichols, Pastor.  
Plan Haller 2.30  
Tells 10.30 a.m. Athens 7.30 p.m.  
Sunday School at 11 a.m.  
Prayer Meeting, Thursday at 7.30 p.m.

**DR. PAUL**  
PHYSICIAN, SURGEON AND OBSTETRICIAN  
Post Graduate New York Lying-in Hospital and other New York Hospitals.  
Office and Residence in the home formerly occupied by Mrs. Norman Brown, Reid St., Athens.

**B. F. SCOTT, Licensed Auctioneer for Leeds and Grenville. Addison, Ont. Write or 'phone.**

**EATON—The Auctioneer**  
Sales conducted any place in Leeds County at reasonable rates. Farmers' Sales and Real Estate a Specialty. Write or call on  
**A. M. EATON ATHENS, ONT.**

**Dr. Chas. E. McLean**  
Physician, Surgeon and Accoucher  
Office Hours: 11 to 12 a.m., 1 to 3 p.m., 7 to 8 p.m.  
Office: Henry Street, Athens  
Phone Calls Day and Night

**PRINTING SERVICE Department**  
Easily accessible by Rural Phone  
**THE ATHENS REPORTER**

**CANADIAN PACIFIC RY.**

The following Summer Schedule is now in effect daily except Sunday, giving excellent train connections to Toronto, Ottawa, Montreal, and International points; also to Western Canada, and Pacific and Atlantic Coast points.

**LOCAL TIME-TABLE**  
To and From Brockville Daily (except Sunday)

Departures.	Arrivals
5.40 a.m.	7.25 a.m.
8.30 a.m.	11.55 a.m.
3.15 p.m.	2.00 p.m.
5.50 p.m.	10.20 p.m.

**Sunday Service**

Departures.	Arrivals
8.30 a.m.	10.20 p.m.

For rates and particulars apply to,  
**GEO. R. McGLADE**  
City Passenger Agent  
**A. J. POTVIN, City Ticket Agent**  
52 King St. West, Cor. Court House Ave  
Brockville, Ontario Phone 14 and 530

**Quality Brings Satisfaction**

We handle *Glidden* paints, varnishes and specialties—and we are proud of it. That is one big reason why it always pays to use *Glidden* products wherever there is a surface that needs protection. And *Glidden* paints and varnishes beautifully as they protect.

We chose this high-grade line so as to enjoy the satisfaction that comes from seeing our customers satisfied. You see, *Glidden* quality is a product of years of experience, the skill of specialists and the use of only the highest grade materials—and it insures your satisfaction. Come to this store for helpful suggestions and color cards.

**"The Nearest Glidden Dealer"**  
**GLIDDEN**