



FARMERS

You'll Find Just What You Want
For Spring Painting, In

MARTIN-SENOUR PAINTS AND VARNISHES

"MADE IN CANADA"

Your needs have been foreseen. Dealers in your neighborhood have been supplied with the Martin-Senour line. And you have only to name your Painting Wants, to have them promptly filled.

HOUSE PAINT—Why should you waste money on impure paint, or bother with mixing lead and oil, when you can get Martin-Senour "100% Pure" Paint for all outside and inside painting? Always the same in quality, color, fineness and purity.

BARN PAINT—Martin-Senour "RED SCHOOL HOUSE" is the paint for the barn. It spreads easily—covers more surface—and holds its fresh, bright color against wear and weather.

FLOOR PAINT—There's only one to be considered—the old reliable **SENOUR'S** Floor Paint—the kind that wears, and wears, and wears.

WAGON PAINT—Keep the machines, wagons and tools fresh and bright—and protect them against rust and weather—by giving them a coat or two of Martin-Senour "Wagon and Implement" Paint.

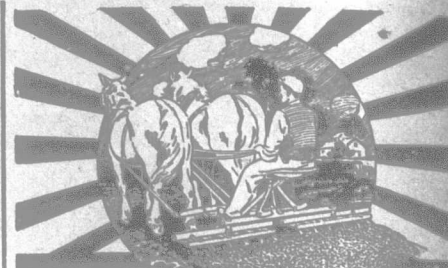
Write us today for "Farmer's Color Set" and name of our nearest dealer-agent.

ADDRESS ALL ENQUIRIES TO

The MARTIN-SENOUR Co.
LIMITED

655 DROLET STREET, MONTREAL.

74

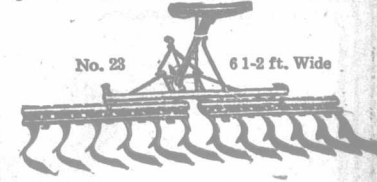


"Fine Work!"

—that's what you'll say when you see the soil, manure and stubble mixed over and over with the

"Acme" Pulverizing Harrow

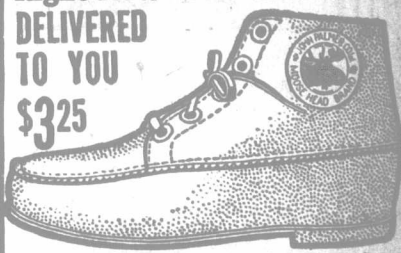
"The coulters do the work." They cut and crush clods, turn the soil twice, pulverize and mulch at one operation. There's an "Acme" for every purpose—size 8 to 17 1/2 feet in width. Send for free book—now—and learn more about these most dependable of all seedbed builders.



The Bateman-Wilkinson Co., Ltd.
800 Symington Ave. Toronto, Ont.

Right Now You Need A Pair

DELIVERED
TO YOU
\$3.25



Don't wear ill-made inferior shoes and suffer with sore, tired aching feet. Send for a pair of our specially made, easy-fitting, durable harvest and plow shoes. We make them of our famous oil-tanned Skowhegan leather with full waterproofed sole, leather soles and heels and solid insoles. They are particularly adapted for farmers, woodsmen, millmen, trackmen and laborers—any who require comfortable footwear having extra strength and durability.

Palmer's "Moose Head Brand"

are made by specialists, on easy fitting right and left lasts. If your dealer hasn't them, send his name and \$3.25 (postal or express order), stating size, and we will deliver a pair all charges paid to your address, anywhere in Canada or U. S. The same style 8 eyelets high, \$3.75. Write for catalogue E
JOHN PALMER CO., Limited,
Fredericton, N. B., Canada.

PLEASURE CRUISES BY

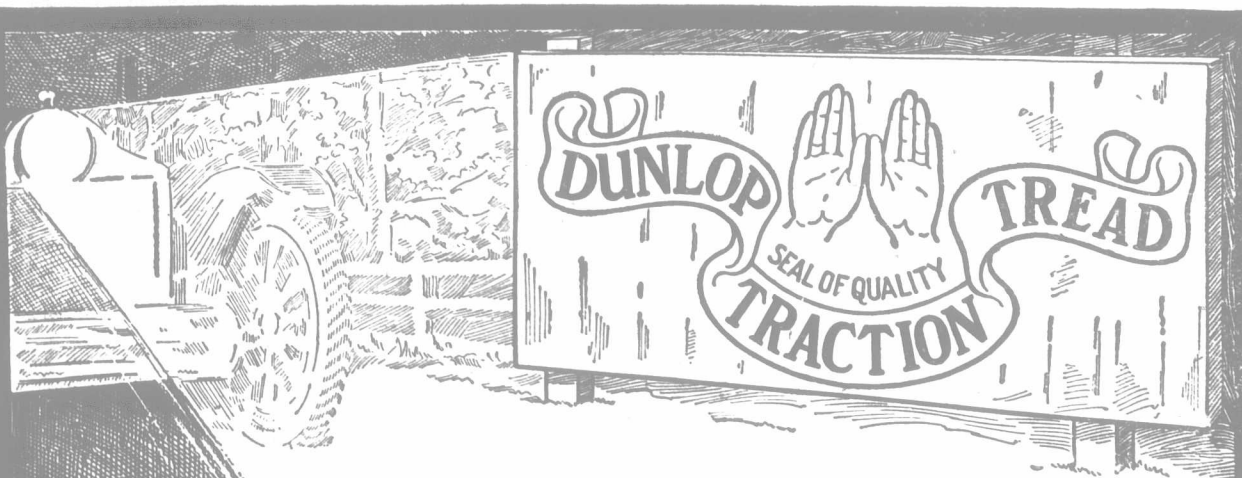
R.M.S.P. TO WEST INDIES

FORTNIGHTLY SAILINGS
By Twin-Screw Mail Steamers

SPECIAL FACILITIES FOR TOURISTS

Next Sailing from HALIFAX:
R.M.S.P. "Chaleur," April 21, 1916

APPLY TO
The Royal Mail Steam Packet Co.,
67-69, Granville Street, HALIFAX (N.S.)
OR TO THE
Local TICKET AGENCIES.



"MOST
ENVIED
TIRE
IN ALL
AMERICA"

- | | |
|---------------------------------------|---------------------------------------|
| Most Durability in Service | Most Immunity from Rim-Cuts |
| Most Reliability in Danger | Most Absence of Dust |
| Most Freedom from Punctures | Most Inches of Air-Capacity |

These are some of the reasons for calling DUNLOP TRACTION TREAD "MOST ENVIED TIRE IN ALL AMERICA."

S.T. 114

ASK
our sales office nearest you for prices and terms on fertilizers adapted to your soil and crops
Send for Canada Booklet-Free
The American Agricultural Chemical Co.
New York, Boston, Buffalo, Detroit